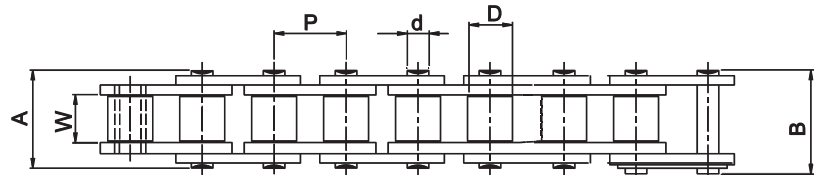
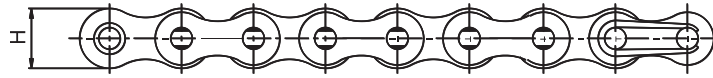


DIAMOND[®]



STANDARD ROLLER CHAINS



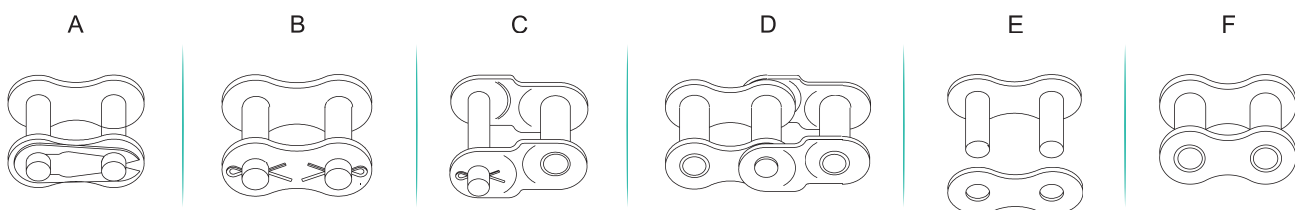
ISO 606/BS 228/DIN 8187

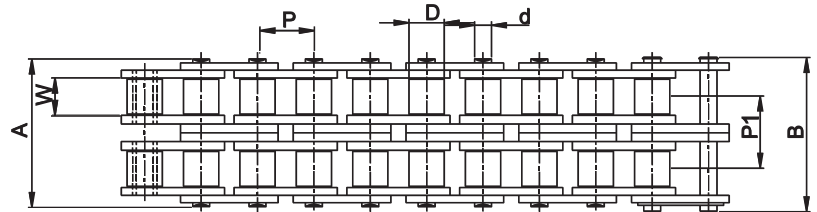
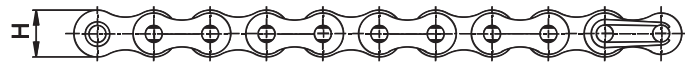
The European series of roller chains are designed for use in mechanical power transmission systems.

Single Strand

Int. Ref. No.	DIAMOND Chain No.	Pitch (P)	Width Between Inner Plates (W) (Min)	Roller Pin Dia (D) (Max)	Bearing Pin Dia (d) (Max)	Plate Height (H) (Max)	Width Over Bearing Pin (A) (Max)	Width Over Joint Fasteners (B) (Max)	Projected Bearing Area Sq.cm	Avg. Weight per Meter (Kg)	Tensile Strength (Kgf) (Min)	Spares Availability
04B-1	D04B 01	6.00	2.80	4.00	1.85	5.00	7.40	10.30	0.08	0.12	300	A,B,C,D
05B-1	D05B 01	8.00	3.00	5.00	2.31	7.11	8.60	11.70	0.11	0.18	510	A,B,C,D
06B-1	D061 01	9.525	5.72	6.35	3.28	8.26	13.50	16.80	0.28	0.40	910	A,B,C,D
08B-1	D083 01	12.70	7.75	8.51	4.45	11.81	17.00	20.90	0.50	0.68	1840	A,B,C,D
10B-1	D101 01	15.875	9.65	10.16	5.08	14.73	19.60	23.70	0.67	0.91	2290	A,B,C,D
12B-1	D120 01	19.05	11.68	12.07	5.72	16.10	22.70	27.30	0.88	1.12	2960	A,B,C,D
16B-1	D160 01	25.40	17.02	15.88	8.28	21.08	36.10	41.50	2.07	2.59	6120	A,B,C,D
20B-1	D200 01	31.75	19.56	19.05	10.19	26.40	43.20	49.30	2.91	3.60	9690	A,B,C,D
24B-1	D240 01	38.10	25.40	25.40	14.63	33.40	53.40	60.00	5.49	6.85	16310	B,C,D
28B-1	D280 01	44.45	30.99	27.94	15.90	37.08	65.10	72.50	7.26	8.56	20390	B,C,D
32B-1	D320 01	50.80	30.99	29.21	17.81	42.28	67.40	75.30	8.05	9.49	25500	B,C,D
40B-1	D400 01	63.50	38.10	39.37	22.89	52.96	82.60	92.80	12.61	15.53	36190	B,C,D
48B-1	D480 01	76.20	45.72	48.26	29.24	63.88	99.10	109.60	20.40	24.45	57090	B,C,D

*Straight Side Plates





ISO 606/BS 228/DIN 8187

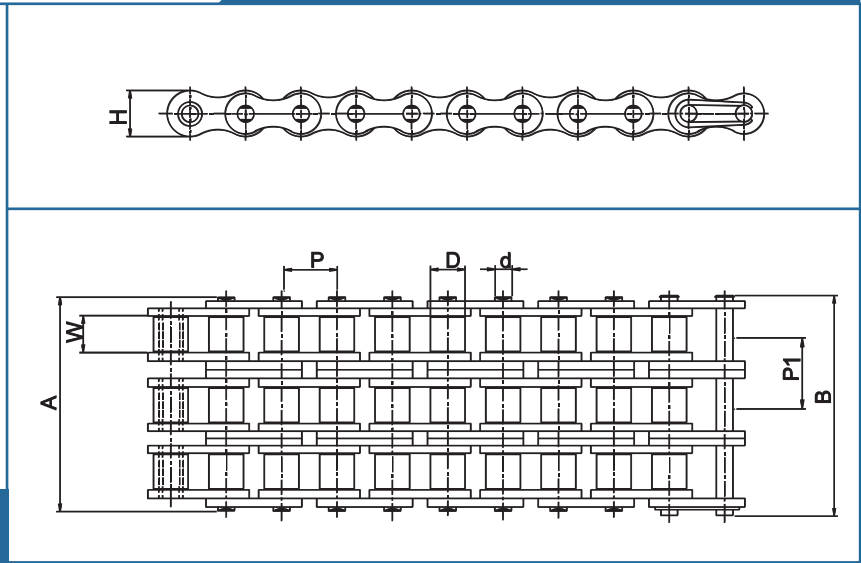
Double Strand

Int. Ref. No.	DIAMOND Chain No.	Pitch (P)	Width Between Inner Plates (W) (Min)	Roller Pin Dia (D) (Max)	Bearing Pin Dia (d) (Max)	Plate Height (H) (Max)	Width Over Bearing Pin (A) (Max)	Width Over Joint Fasteners (B) (Max)	Transverse Pitch	Projected Bearing Area Sq.cm	Avg. Weight per Meter (Kg)	Tensile Strength (Kgf) (Min)	Spares Availability
05B-2	D05B 02	8.00	3.00	5.00	2.31	7.11	14.30	17.40	5.64	0.22	0.32	795	A,B,C,D
06B-2*	D061 02	9.525	5.72	6.35	3.28	8.26	23.80	27.10	10.24	0.56	0.76	1724	A,B,C,D
08B-2	D083 02	12.70	7.75	8.51	4.45	11.81	31.00	34.90	13.92	1.00	1.31	3270	A,B,C,D
10B-2	D101 02	15.875	9.65	10.16	5.08	14.73	36.20	40.30	16.59	1.34	1.79	4540	A,B,C,D
12B-2	D120 02	19.05	11.68	12.07	5.72	16.13	42.20	46.80	19.46	1.76	2.22	5900	A,B,C,D
16B-2	D160 02	25.40	17.02	15.88	8.28	21.08	68.00	73.40	31.88	4.14	5.03	11600	A,B,C,D
20B-2	D200 02	31.75	19.56	19.05	10.19	26.42	79.70	85.80	36.45	5.82	7.33	17330	A,B,C,D
24B-2	D240 02	38.10	25.40	25.40	14.63	33.40	101.80	108.40	48.36	10.98	13.50	28550	B,C,D
28B-2	D280 02	44.45	30.99	27.94	15.90	37.08	124.70	132.10	59.56	14.52	16.96	36700	B,C,D
32B-2	D320 02	50.80	30.99	29.21	17.81	42.29	126.00	133.90	58.55	16.10	18.74	45880	B,C,D
40B-2	D400 02	63.50	38.10	39.37	22.89	52.96	154.90	165.10	72.29	25.23	30.72	64220	B,C,D
48B-2	D480 02	76.20	45.72	48.26	29.24	63.88	196.40	200.90	91.21	40.81	48.54	101940	B,C,D

*Straight Side Plates



ISO 606/BS 228/DIN 8187



Triple Strand

Int. Ref. No.	DIAMOND Chain No.	Pitch (P)	Width Between Inner Plates (W) (Min)	Roller Pin Dia (D) (Max)	Bearing Pin Dia (d) (Max)	Plate Height (H) (Max)	Width Over Bearing Pin (A) (Max)	Width Over Joint Fasteners (B) (Max)	Transverse Pitch	Projected Bearing Area Sq.cm	Avg. Weight per Meter (Kg)	Tensile Strength (Kgf) (Min)	Spares Availability
05B-3	D05B 03	8.00	3.00	5.00	2.31	7.11	19.90	23.00	5.64	0.33	0.50	1130.00	A,B,C,D
06B-3	D061 03	9.525	5.72	6.35	3.28	8.26	34.00	37.30	10.24	0.84	1.12	2540.00	A,B,C,D
08B-3	D083 03	12.70	7.75	8.51	4.45	11.81	44.90	48.80	13.92	1.50	1.94	4850.00	A,B,C,D
10B-3	D101 03	15.875	9.65	10.16	5.08	14.73	52.80	56.90	16.59	2.01	2.68	6810.00	A,B,C,D
12B-3	D120 03	19.05	11.68	12.07	5.72	16.13	61.70	66.30	19.46	2.64	3.32	8850.00	A,B,C,D
16B-3	D160 03	25.40	17.02	15.88	8.28	21.08	99.90	105.30	31.88	6.21	7.65	17400.00	A,B,C,D
20B-3	D200 03	31.75	19.56	19.05	10.19	26.42	116.10	122.20	36.45	8.73	10.96	25490.00	A,B,C,D
24B-3	D240 03	38.10	25.40	25.40	14.63	33.40	150.20	156.80	48.36	16.47	20.20	43330.00	B,C,D
28B-3	D280 03	44.45	30.99	27.94	15.90	37.08	184.30	191.70	59.56	21.78	25.38	54030.00	B,C,D
32B-3	D320 03	50.80	30.99	29.21	17.81	42.29	184.50	192.40	58.55	24.15	28.04	68300.00	B,C,D
40B-3	D400 03	63.50	38.10	39.37	22.89	52.96	227.20	237.40	72.29	37.85	45.97	96840.00	B,C,D
48B-3	D480 03	76.20	45.72	48.26	29.24	63.88	281.60	292.10	91.21	61.22	72.67	152910.0	B,C,D

0

*Straight Side Plates

DIAMOND[®] MAX
 CHAINS WITH MORE LIFE

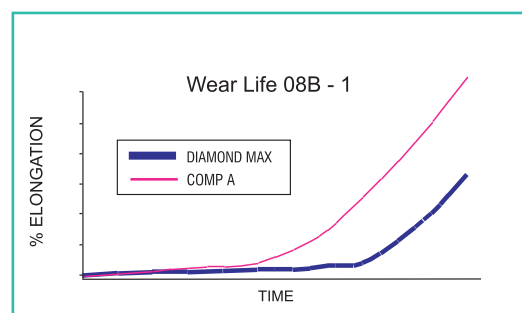
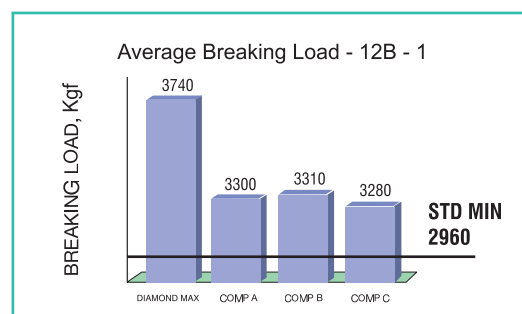
ROLLER CHAINS



The Diamond Max Series

This special series of hi-life, special characteristic chains has been created for rugged applications, where the standard chains have always fallen short. They feature unique properties such as high breaking load, increased fatigue strength & wear life, close length tolerance and more.

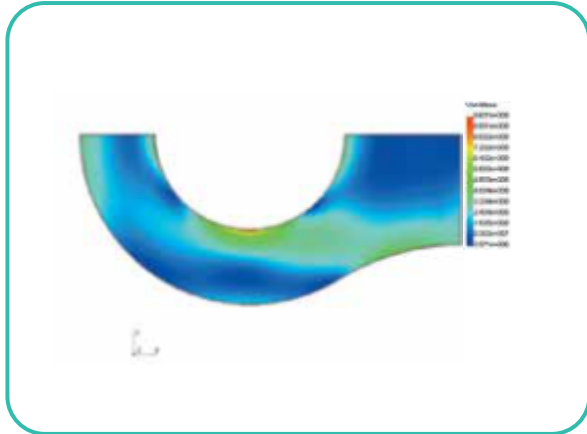
Diamond Max Roller Chains have been specifically developed with exceptional strength and endurance. They get their extra endurance from the inspiration in the detail of the plates, pins, bushes and rollers, manufacture to close tolerance, and assembly with care.



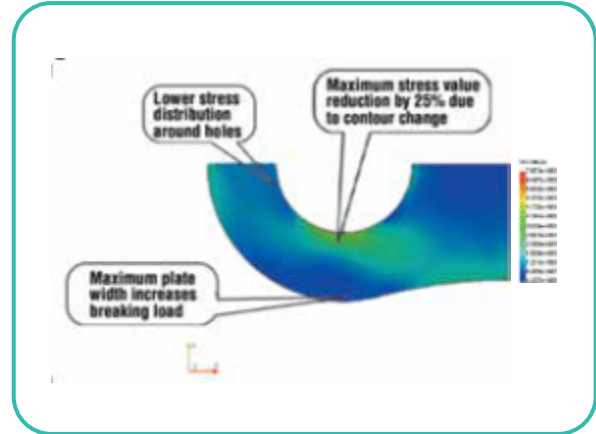


DIAMOND • MAX

CHAINS WITH MORE LIFE

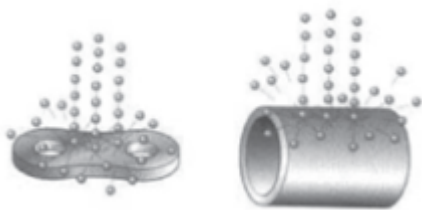


REGULAR CONTOUR



NEW CONTOUR

SHOT PEENING



Fatigue life is enhanced by shot peening and pre-stressing processes

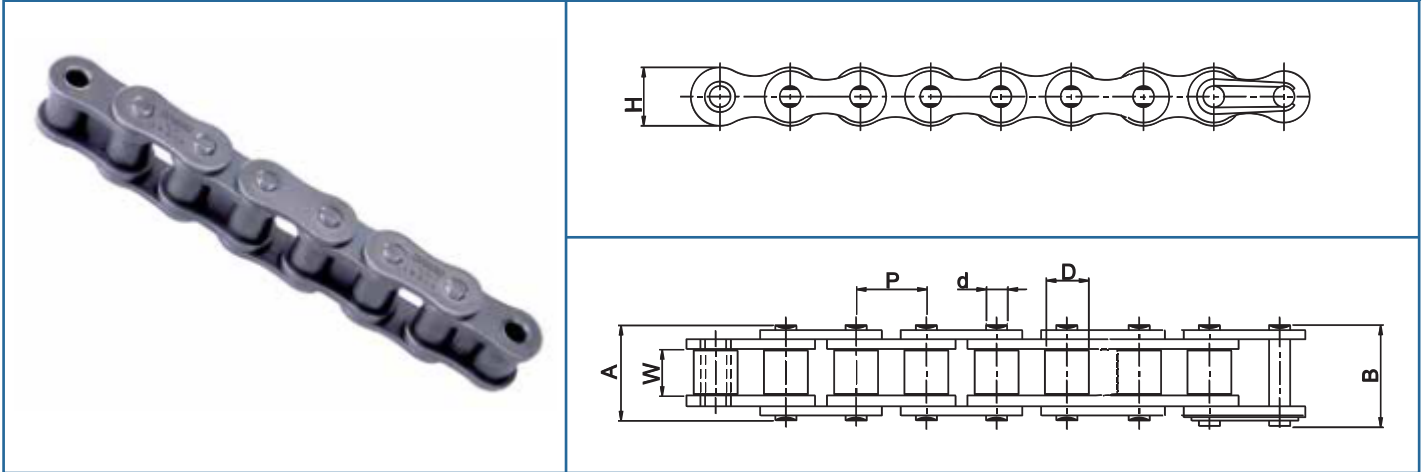
SHOT PEENED PLATES



HIGH PERFORMANCE CHAINS

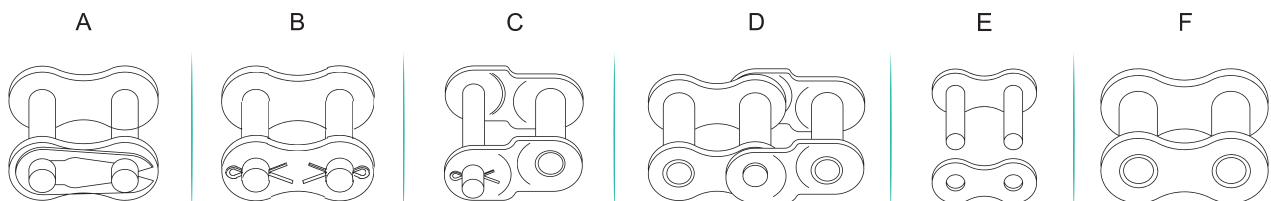


DIAMOND MAX EUROPEAN SERIES

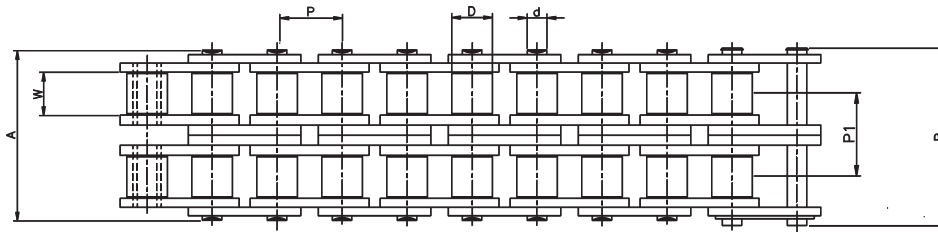
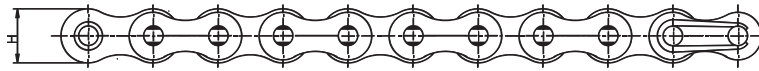


Single Strand

Int. Ref. No.	DIAMOND Chain No.	Pitch (P)	Width Between Inner Plates (W) (Min)	Roller Dia (D) (Max)	Plate Height (H) (Max)	Bearing Pin Dia (d) (Max)	Width Over Bearing Pin (A) (Max)	Width Over Joint Fasteners (B) (Max)	Projected Bearing Area Sq.cm	Avg. Weight per Meter (Kg)	Diamond Max Tensile Strength (Kgf) (Min)	Spares Availability
08B-1	Q083 01	12.70	7.75	8.51	11.81	4.45	17.00	20.90	0.50	0.74	2120	A,B,C,D
10B-1	Q101 01	15.875	9.65	10.56	14.73	5.08	19.60	23.70	0.67	0.98	2828	A,B,C,D
12B-1	Q120 01	19.05	11.68	12.07	16.13	5.72	22.70	27.30	0.88	1.20	3400	A,B,C,D
16B-1	Q160 01	25.40	17.02	15.88	21.08	8.27	36.10	41.50	2.07	2.87	7500	A,B,C,D
20B-1	Q200 01	31.75	19.56	19.05	26.42	10.19	43.20	49.30	2.91	3.85	11300	A,B,C,D



STANDARD ROLLER CHAINS



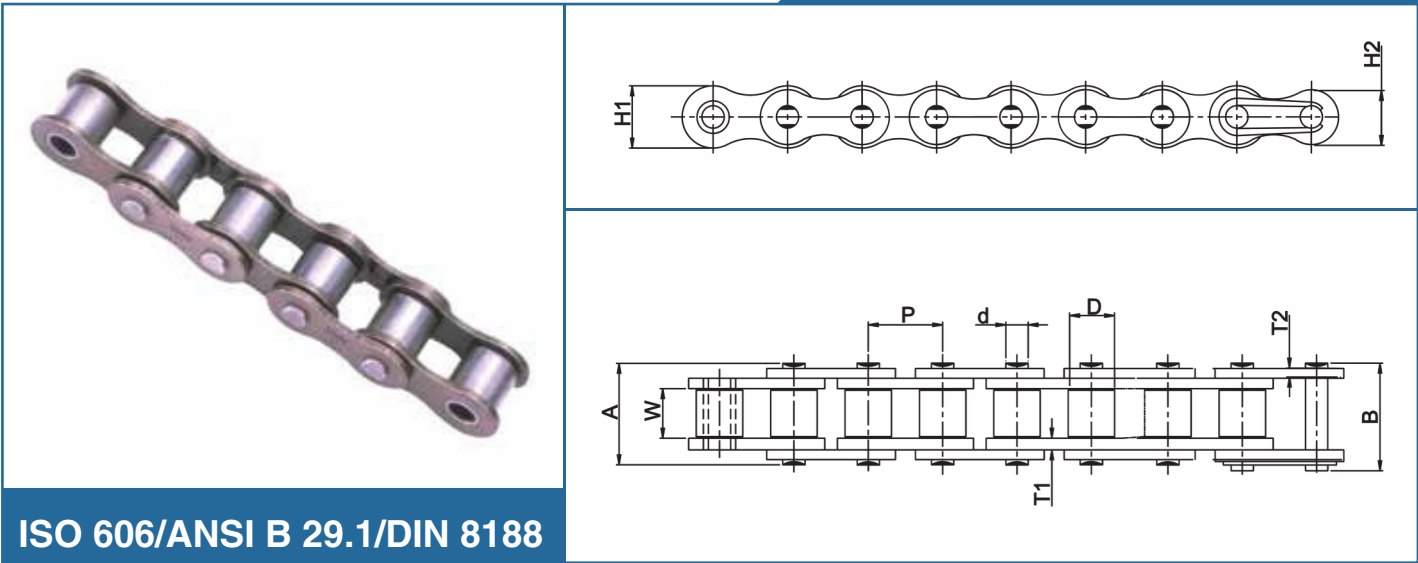
Double Strand

Int. Ref. No.	DIAMOND Chain No.	Pitch (P)	Width Between Inner Plates (W) (Min)	Roller Dia (D) (Max)	Plate Height (H) (Max)	Bearing Pin Dia (d) (Max)	Width Over Bearing Pin (A) (Max)	Width Over Joint Fasteners (B) (Max)	Transverse Pitch (P1)	Avg. Weight per Meter (Kg)	Diamond Max Tensile Strength (Kgf) (Min)	Spares Availability
08B-2	Q083 02	12.70	7.75	8.51	11.81	4.45	31.00	34.90	13.92	1.43	3800	A,B,C,D
10B-2	Q101 02	15.88	9.65	10.56	14.73	5.08	36.20	40.30	16.59	1.93	5300	A,B,C,D
12B-2	Q120 02	19.05	11.68	12.07	16.13	5.72	42.20	46.80	19.46	2.38	6800	A,B,C,D
16B-2	Q160 02	25.40	17.02	15.88	21.08	8.27	68.00	73.40	31.88	5.57	15000	A,B,C,D
20B-2	Q200 02	31.75	19.56	19.05	26.42	10.19	79.70	85.80	36.45	7.84	20400	A,B,C,D

Triple Strand

Int. Ref. No.	DIAMOND Chain No.	Pitch (P)	Width Between Inner Plates (W) (Min)	Roller Dia (D) (Max)	Plate Height (H) (Max)	Bearing Pin Dia (d) (Max)	Width Over Bearing Pin (A) (Max)	Width Over Joint Fasteners (B) Max	Transverse Pitch (P1)	Avg. Weight per Meter (Kg)	Diamond Max Tensile Strength (Kgf) (Min)	Spares Availability
08B-3	Q083 03	12.70	7.75	8.51	11.81	4.45	44.90	48.80	13.92	2.11	5590	A,B,C,D
10B-3	Q101 03	15.88	9.65	10.56	14.73	5.08	52.80	56.90	16.59	2.89	8400	A,B,C,D
12B-3	Q120 03	19.05	11.68	12.07	16.13	5.72	61.70	66.30	19.46	3.56	10200	A,B,C,D
16B-3	Q160 03	25.40	17.02	15.88	21.08	8.27	99.90	105.30	31.88	8.48	22500	A,B,C,D
20B-3	Q200 03	31.75	19.56	19.05	26.42	10.19	116.10	122.10	36.45	11.72	29700	A,B,C,D

AMERICAN SERIES



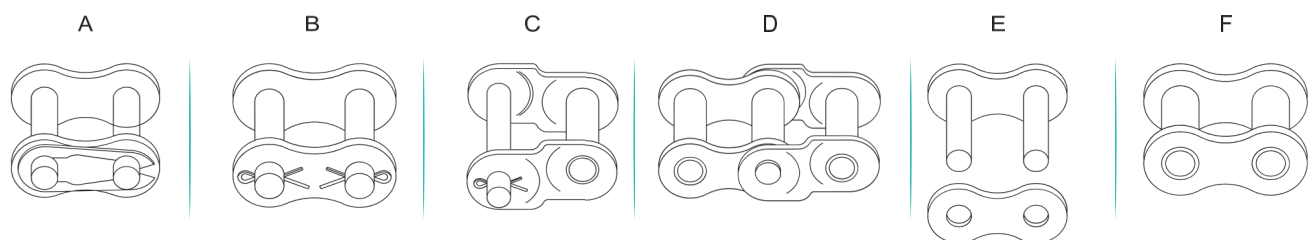
ISO 606/ANSI B 29.1/DIN 8188

The American series of roller chains are designed for use in mechanical power transmission systems.

Single Strand

Int. Ref. No.	DIAMOND Chain No.	Pitch (P)	Width Between Inner Plates (W) (Min)	Roller Dia (D) (Max)	Bearing Pin Dia (d) (Max)	Plate Height		Plate Thickness		Width Over Bearing Pin (A) (Max)	Width Over Joint Fasteners (B) (Max)	Projected Bearing Area Sq.cm	Avg. Weight per Meter (Kg)	Tensile Strength (Kgf) (Min)	Spares Availability
						IP (H1) (Max)	OP (H2) (Max)	IP (T1)	OP (T2)						
25-1	B 04A 01	6.35	3.10	3.30*	2.31	6.03	5.25	0.75	0.75	9.10	11.60	0.11	0.13	360	A,B,C,D
35-1	B 06A 01	9.525	4.68	5.08*	3.60	9.04	7.81	1.25	1.25	13.20	16.10	0.27	0.34	798	A,B,C,D
40-1	D 08A 01	12.70	7.85	7.92	3.98	12.06	10.40	1.50	1.50	17.80	21.20	0.44	0.63	1410	A,B,C,D
41-1	D 08D 01	12.70	6.25	7.77	3.60	9.55	8.26	1.25	1.25	15.00	18.40	0.33	0.43	910	A,B,C,D
50-1	D 102 01	15.875	9.40	10.16	5.09	15.08	13.00	2.00	2.00	21.80	25.60	0.71	1.04	2200	A,B,C,D
60-1	D 121 01	19.05	12.58	11.91	5.96	18.09	15.90	2.40	2.40	26.80	31.00	1.04	1.52	3190	A,B,C,D
80-1	D 161 01	25.40	15.75	15.88	7.94	24.10	20.80	3.20	3.20	34.00	39.10	1.77	2.58	5670	A,B,C,D
100-1	D 201 01	31.75	18.90	19.05	9.54	30.16	26.00	4.00	4.00	41.20	47.10	2.59	3.85	9030	A,B,C,D
120-1	D 241 01	38.10	25.25	22.23	11.11	36.20	31.20	4.70	4.70	51.50	58.30	3.90	5.61	12950	B,C,D
140-1	D 281 01	44.45	25.23	25.40	12.71	42.20	36.20	5.56	5.56	55.60	63.30	4.67	7.64	17240	B,C,D
160-1	D 321 01	50.80	31.55	28.58	14.29	48.20	41.60	6.30	6.30	66.60	74.50	6.38	9.61	22680	B,C,D
180-1	D 361 01	57.15	35.49	35.71	17.46	54.31	46.86	7.14	7.14	73.90	83.30	9.38	13.23	28700	B,C,D
200-1	D 401 01	63.50	37.85	39.68	19.85	60.30	52.00	7.90	7.90	80.30	90.50	10.75	16.26	36070	B,C,D
240-1	D 481 01	76.20	47.35	47.68	23.81	72.30	62.40	9.60	9.60	97.90	109.80	15.90	23.63	53050	B,C,D

*Bush Chain



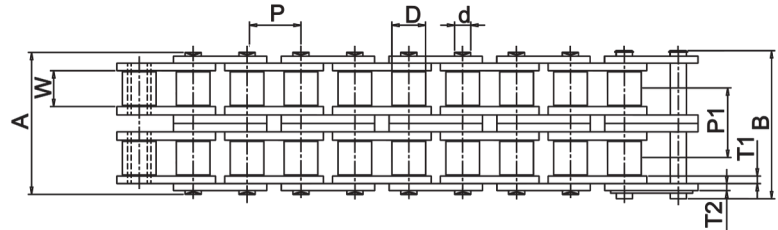
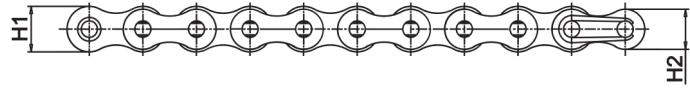
Note : Spares E & F are available for all models

STANDARD ROLLER CHAINS

AMERICAN SERIES



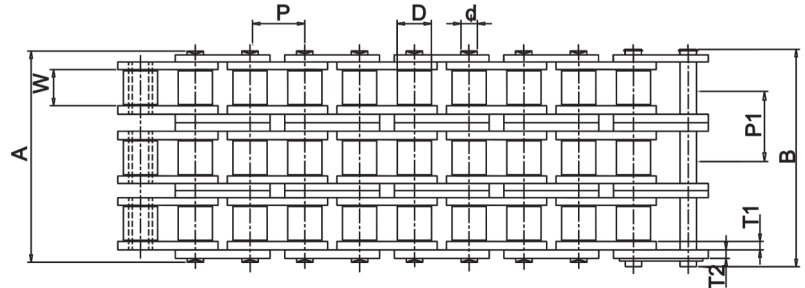
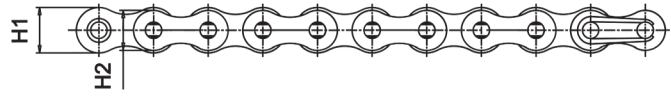
ISO 606/ANSI B 29.1/DIN 8188



Double Strand

Int. Ref. No.	DIAMOND Chain No.	Pitch (P)	Width Between Inner Plates (W) (Min)	Roller Dia (D) (Max)	Bearing Pin Dia (d) (Max)	Plate Height		Plate Thickness		Width Over Bearing Pin (A) (Max)	Width Over Joint Fasteners (B) (Max)	Transverse Pitch (P1)	Projected Bearing Area Sq.cm	Avg. Weight per Meter (Kg)	Tensile Strength (Kgf) (Min)	Spares Availability
						IP (H1) (Max)	OP (H2) (Max)	IP (T1)	OP (T2)							
35-2	B 06A 02	9.525	4.68	5.08*	3.60	8.65	7.81	1.25	1.25	23.30	26.20	10.13	0.53	0.67	1600	A,B,C,D
40-2	D 08A 02	12.70	7.85	7.92	3.98	12.00	10.40	1.50	1.50	32.10	35.50	14.38	0.88	1.26	2820	A,B,C,D
50-2	D 102 02	15.875	9.40	10.16	5.09	15.00	13.00	2.00	2.00	39.90	44.00	18.11	1.42	2.05	4440	A,B,C,D
60-2	D 121 02	19.05	12.58	11.91	5.96	18.09	15.90	2.40	2.40	49.60	53.80	22.78	2.08	3.01	6360	A,B,C,D
80-2	D 161 02	25.40	15.75	15.88	7.94	24.10	20.80	3.20	3.20	63.30	68.40	29.29	3.54	5.13	11340	A,B,C,D
100-2	D 201 02	31.75	18.90	19.05	9.54	30.16	26.00	4.00	4.00	76.90	82.80	35.76	5.18	7.64	18060	A,B,C,D
120-2	D 241 02	38.10	25.22	22.23	11.11	36.20	31.20	4.70	4.70	97.00	103.80	45.44	7.80	11.13	25900	B,C,D
140-2	D 281 02	44.45	25.22	25.40	12.71	42.20	36.40	5.56	5.56	104.50	112.20	48.87	9.35	14.37	35160	B,C,D
160-2	D 321 02	50.80	31.55	28.57	14.29	48.20	41.60	6.30	6.30	124.50	133.00	58.55	12.77	19.68	46240	B,C,D
180-2	D 361 02	57.15	35.48	35.71	17.46	54.31	46.86	7.14	7.14	139.80	149.20	65.84	18.76	26.46	57100	B,C,D
200-2	D 401 02	63.50	37.85	39.68	19.85	60.30	52.00	7.90	7.90	151.90	162.10	71.55	21.50	32.83	72140	B,C,D
240-2	D 481 02	76.20	47.35	47.63	23.81	72.30	62.40	9.60	9.60	185.80	193.00	87.83	31.80	46.72	106100	B,C,D

*Bush Chain



ISO 606/ANSI B 29.1/DIN 8188

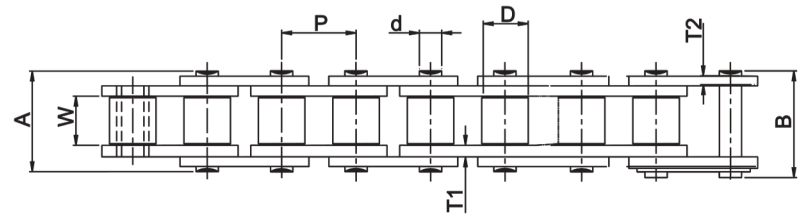
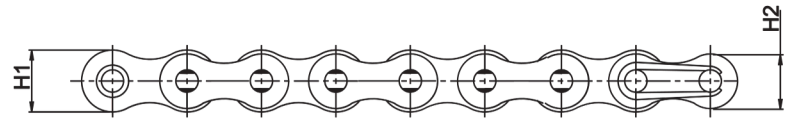
Triple Strand

Int. Ref. No.	DIAMOND Chain No.	Pitch (P)	Width Between Inner Plates (W) (Min)	Roller Dia (D) (Max)	Bearing Pin Dia (d) (Max)	Plate Height		Plate Thickness		Width Over Bearing Pin (A) (Max)	Width Over Joint Fasteners (B) (Max)	Transverse Pitch (P1)	Projected Bearing Area Sq.cm	Avg. Weight per Meter (Kg)	Tensile Strength (Kgf) (Min)	Spares Availability
						IP (H1) (Max)	OP (H2) (Max)	IP (T1)	OP (T2)							
35-3	B 06A 03	9.525	4.68	5.08*	3.60	8.65	7.81	1.25	1.25	33.40	36.30	10.13	0.80	0.99	2394	A,B,C,D
40-3	D 08A 03	12.70	7.85	7.92	3.98	12.00	10.40	1.50	1.50	46.50	49.90	14.38	1.32	1.98	4320	A,B,C,D
50-3	D 103 03	15.875	9.40	10.16	5.09	15.00	13.00	2.00	2.00	58.00	61.80	18.11	2.13	3.06	6660	A,B,C,D
60-3	D 121 03	19.05	12.58	11.91	5.96	18.09	15.90	2.40	2.40	72.40	76.60	22.78	3.12	4.05	9540	A,B,C,D
80-3	D 161 03	25.40	15.75	15.88	7.94	24.10	20.80	3.20	3.20	92.60	97.70	29.29	5.31	7.67	17010	A,B,C,D
100-3	D 201 03	31.75	18.90	19.05	9.54	30.16	26.00	4.00	4.00	112.70	118.60	35.76	7.77	11.43	27090	A,B,C,D
120-3	D 241 03	38.10	25.22	22.23	11.11	36.20	31.20	4.70	4.70	142.40	149.20	45.44	11.70	16.67	38850	B,C,D
140-3	D 281 03	44.45	25.22	25.40	12.71	42.20	36.40	5.56	5.56	153.40	161.10	48.87	14.03	21.51	52740	B,C,D
160-3	D 321 03	50.80	31.55	28.57	14.29	48.20	41.60	6.30	6.30	183.10	191.60	58.55	19.16	29.45	69360	B,C,D
180-3	D 361 03	57.15	35.48	35.71	17.46	54.31	46.86	7.14	7.14	205.60	215.00	65.84	28.14	39.66	85700	B,C,D
200-3	D 401 03	63.50	37.85	39.68	19.85	60.30	52.00	7.90	7.90	223.40	233.60	71.55	32.26	48.28	108210	B,C,D
240-3	D 481 03	76.20	47.35	47.63	23.81	72.30	62.40	9.60	9.60	273.60	285.50	87.83	47.71	69.77	159150	B,C,D

*Bush Chain



ANSI B 29.1

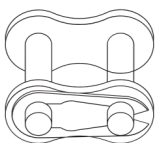


The American Heavy series roller chains are designed using link plates from the next higher size. The thicker link plates provide increased fatigue resistance and are used in drives subjected to heavy shock loads, multiple stops or reversing.

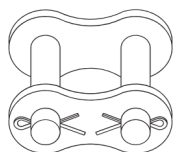
Single Strand

Int. Ref. No.	DIAMOND Chain No.	Pitch (P)	Width Between Inner Plates (W) (Min)	Roller Dia (D) (Max)	Bearing Pin Dia (d) (Max)	Plate Height		Plate Thickness		Width Over Bearing Pin (A) (Max)	Width Over Joint Fasteners (B) (Max)	Projected Bearing Area Sq.cm	Avg. Weight per Meter (Kg)	Tensile Strength (Kgf) (Min)	Spares Availability
						IP (H1) (Max)	OP (H2) (Max)	IP (T1)	OP (T2)						
60H-1	D 122 01	19.05	12.58	11.91	5.96	18.00	14.88	3.20	3.20	31.20	35.40	1.14	1.81	3190	AB,C,D
80H-1	D 162 01	25.40	15.75	15.88	7.94	24.10	20.80	4.00	4.00	38.00	43.40	1.89	3.00	5670	AB,C,D
100H-1	D 202 01	31.75	18.90	19.05	9.54	30.16	26.00	4.70	4.70	45.40	51.50	2.75	4.38	9030	AB,C,D
120H-1	D 242 01	38.10	25.23	22.23	11.11	36.20	31.20	5.56	5.56	55.10	61.70	4.10	6.61	12950	B,C,D
140H-1	D 282 01	44.45	25.23	25.40	12.71	42.20	36.20	6.30	6.30	60.40	67.80	5.20	8.33	17240	B,C,D
160H-1	D 322 01	50.80	31.55	28.58	14.29	48.20	41.60	7.14	7.14	70.00	77.90	7.10	10.33	22680	B,C,D
200H-1	D 402 01	63.50	37.85	39.68	19.85	60.30	52.00	9.50	9.50	93.10	103.30	12.17	20.65	36070	B,C,D

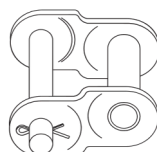
A



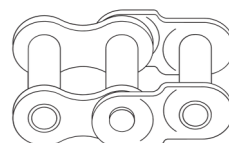
B



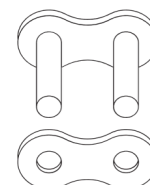
C



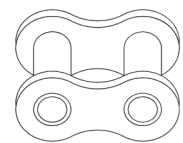
D



E



F

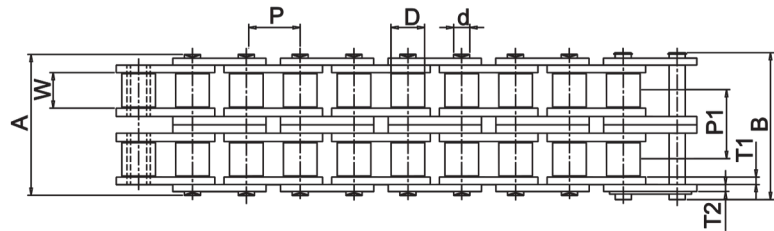
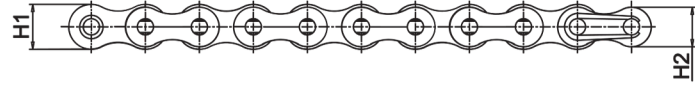


STANDARD ROLLER CHAINS

AMERICAN HEAVY SERIES



ANSI B 29.1



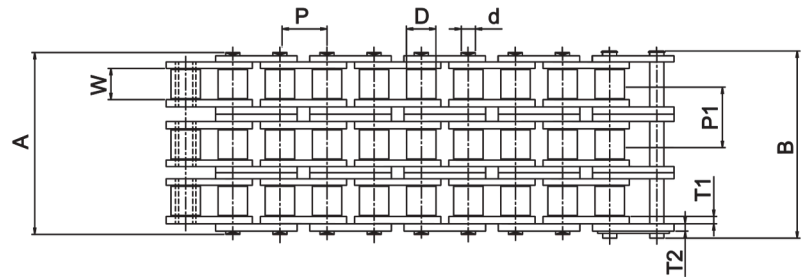
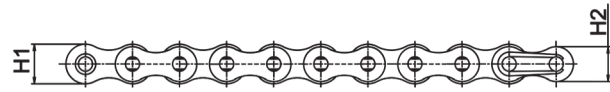
Double Strand

Int. Ref. No.	DIAMOND Chain No.	Pitch (P)	Width Between Inner Plates (W) (Min)	Roller Dia (D) (Max)	Bearing Pin Dia (d) (Max)	Plate Height		Plate Thickness		Width Over Bearing Pin (A) (Max)	Width Over Joint Fasteners (B) (Max)	Transverse Pitch (P1)	Projected Bearing Area Sq.cm	Avg. Weight per Meter (Kg)	Tensile Strength (Kgf) (Min)	Spares Availability
						IP (H1) (Max)	OP (H2) (Max)	IP (T1)	OP (T2)							
60H-2	D 122 02	19.05	12.58	11.91	5.96	18.00	14.88	3.20	3.20	56.10	60.70	26.11	2.27	3.71	6380	A,B,C,D
80H-2	D 162 02	25.40	15.75	15.88	7.94	24.10	20.80	4.00	4.00	70.50	75.90	32.59	3.79	5.93	11340	A,B,C,D
100H-2	D 202 02	31.75	18.90	19.05	9.54	30.16	26.00	4.70	4.70	84.00	90.10	39.09	5.50	8.67	18060	A,B,C,D
120H-2	D 242 02	38.10	25.23	22.23	11.11	36.20	31.20	5.56	5.56	103.80	110.40	48.87	8.20	13.13	25900	B,C,D
140H-2	D 282 02	44.45	25.23	25.40	12.71	42.20	36.40	6.30	6.30	112.80	119.60	52.20	10.40	16.52	35160	B,C,D
160H-2	D 322 02	50.80	31.55	28.57	14.29	48.20	41.60	7.14	7.14	132.40	139.90	61.90	14.20	21.32	46240	B,C,D
200H-2	D 402 02	63.50	37.85	39.68	19.85	60.30	52.00	9.50	9.50	170.80	180.80	78.31	24.34	39.26	72140	B,C,D

AMERICAN HEAVY SERIES



ANSI B 29.1



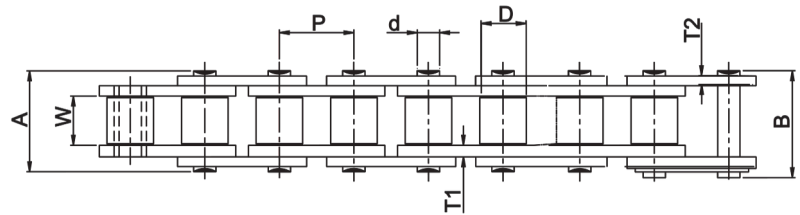
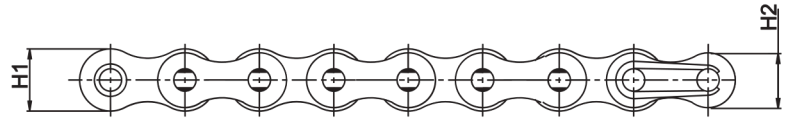
Triple Strand

Int. Ref. No.	DIAMOND Chain No.	Pitch (P)	Width Between Inner Plates (W) (Min)	Roller Dia (D) (Max)	Bearing Pin Dia (d) (Max)	Plate Height		Plate Thickness		Width Over Bearing Pin (A) (Max)	Width Over Joint Fasteners (B) (Max)	Transverse Pitch (P1)	Projected Bearing Area Sq.cm	Avg. Weight per Meter (Kg)	Tensile Strength (Kgf) (Min)	Spares Availability
						IP (H1) (Max)	OP (H2) (Max)	IP (T1)	OP (T2)							
60H-3	D 122 03	19.05	12.58	11.91	5.96	18.00	14.88	3.20	3.20	82.20	86.80	26.11	26.11	5.52	9570	A,B,C,D
80H-3	D 162 03	25.40	15.75	15.88	7.94	24.10	20.80	4.00	4.00	103.30	108.70	32.59	32.59	8.86	17010	A,B,C,D
100H-3	D 202 03	31.75	18.90	19.05	9.54	30.16	26.00	4.70	4.70	123.40	129.50	39.09	39.09	12.96	27090	A,B,C,D
120H-3	D 242 03	38.10	25.23	22.23	11.11	36.20	31.20	5.56	5.56	152.40	159.00	48.87	48.87	19.64	38850	B,C,D
140H-3	D 282 03	44.45	25.23	25.40	12.71	42.20	36.40	6.30	6.30	164.30	171.90	52.20	52.20	24.73	52740	B,C,D
160H-3	D 322 03	50.80	31.55	28.57	14.29	48.20	41.60	7.14	7.14	193.70	210.60	61.90	61.90	31.77	69360	B,C,D
200H-3	D 402 03	63.50	37.85	39.68	19.85	60.30	52.00	9.50	9.50	252.60	262.80	78.31	78.31	60.79	108210	B,C,D

HI - LIFE CHAINS - AMERICAN HEAVY SERIES



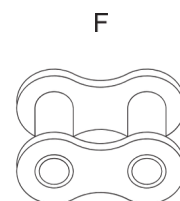
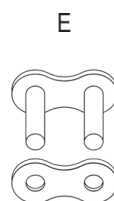
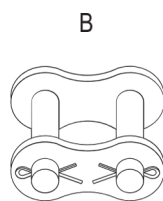
ANSI B 29.1



The chains are dimensionally identical to American Heavy series chains. However the through hardened high tensile pins give the chain a higher working load capacity and improved fatigue resistance in high load and fluctuating type of applications.

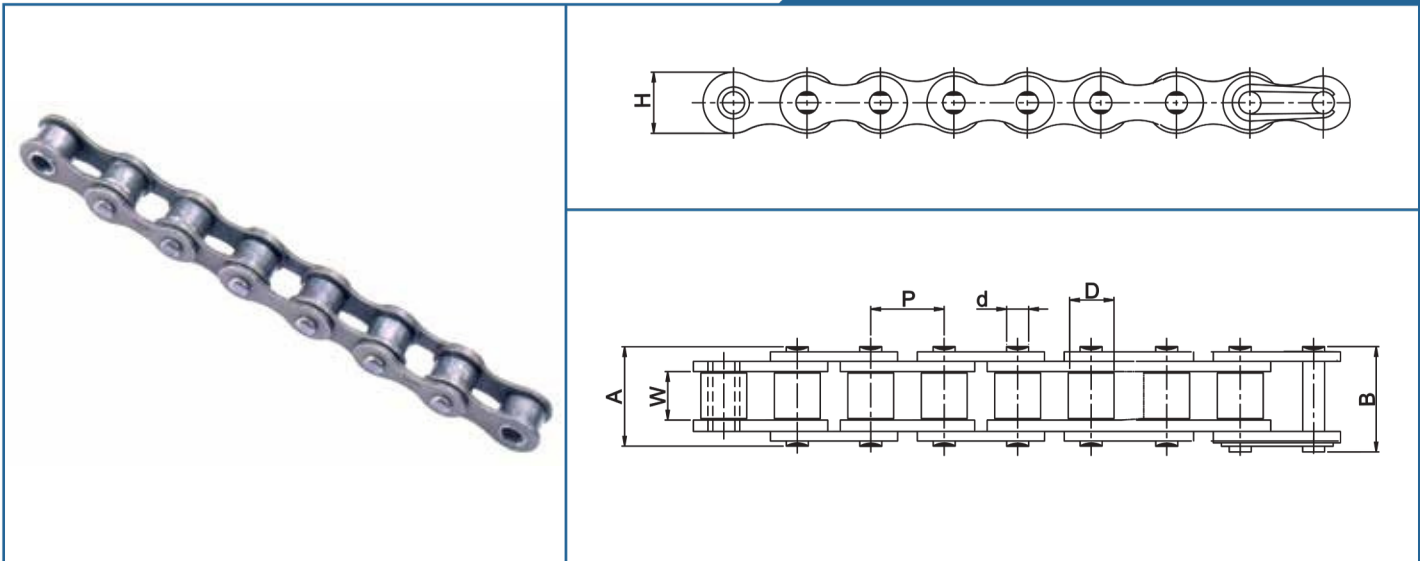
Single Strand

Int. Ref. No.	DIAMOND Chain No.	Pitch (P)	Width Between Inner Plates (W) (Min)	Roller Dia (D) (Max)	Bearing Pin Dia (d) (Max)	Plate Height		Plate Thickness		Width Over Bearing Pin (A) (Max)	Width Over Joint Fasteners (B) (Max)	Projected Bearing Area Sq.cm	Avg. Weight per Meter (Kg)	Tensile Strength (Kgf) (Min)	Spares Availability
						IP (H1) (Max)	OP (H2) (Max)	IP (T1)	OP (T2)						
60H-1	D 122 01HE01	19.05	12.58	11.91	5.96	18.00	14.88	3.20	3.20	31.20	35.40	1.14	1.81	4600	A,B,C,D
80H-1	D 162 01HE02	25.40	15.75	15.88	7.94	24.10	20.80	4.00	4.00	38.00	43.40	1.89	3.00	8700	A,B,C,D
100H-1	D 202 01HE02	31.75	18.90	19.05	9.54	30.16	26.00	4.70	4.70	45.40	51.50	2.75	4.38	11500	A,B,C,D
120H-1	D 242 01HE02	38.10	25.25	22.23	11.11	36.20	31.20	5.56	5.56	55.10	61.70	4.10	6.61	16200	B,C,D
160H-1	D 322 01HE01	50.80	31.55	28.58	14.29	48.20	41.60	7.14	7.14	70.00	77.90	7.10	10.33	29000	B,C,D
200H-1	D 402 01HE01	63.50	37.85	39.68	19.85	60.30	52.00	9.50	9.50	93.10	103.30	12.17	20.65	52500	B,C,D



Note : We do not recommend use of offset links and spring clip type Connecting links (A, C & D) for Hi-Life Chains

OTHER STANDARDS



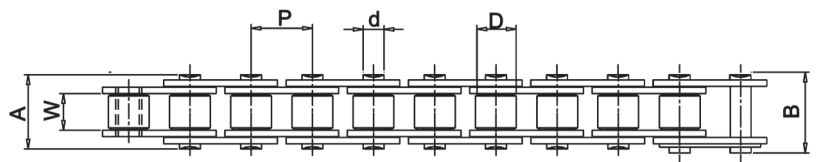
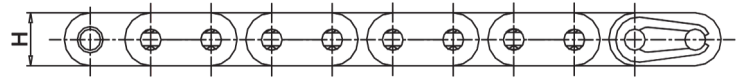
Int. Ref. No.	DIAMOND Chain No.	Pitch (P)	Width Between Inner Plates (W) (Min)	Roller Dia (D) (Max)	Bearing Pin Dia (d) (Max)	Plate Height (H) (Max)	Width Over Bearing Pin (A) (Max)	Width Over Joint Fasteners (B) (Max)	Avg. Weight per Meter (Kg)	Tensile Strength (Kgf) (Min)
81	D08001	12.70	3.30	7.75	9.55	3.64	9.75	11.11	0.28	820
-	D08101	12.70	4.88	7.75	9.55	3.63	11.70	12.75	0.34	820
08MA	D08201	12.70	5.21	8.51	11.65	4.47	14.23	16.00	0.59	1820
83	D08G01	12.70	4.88	7.75	10.30	4.08	12.35	13.35	0.42	1225
J 415 F	D08M01	12.70	5.01	7.75	10.00	4.08	14.35	15.45	0.49	1600
10MA	D160 01	15.88	6.48	10.16	14.56	5.08	15.55	17.15	0.78	1600
-	*D12301	19.05	12.72	14.24	18.80	7.92	31.40	-	2.65	2200
12BH	D12H 01	19.05	11.68	11.91	15.90	6.06	24.75	26.65	1.39	2700
-	D12601	19.05	9.40	11.91	18.04	5.94	22.30	23.75	1.41	6000
-	*D14001	22.23	14.28	15.60	23.58	7.92	36.35	-	3.57	3180
-	D160010005	25.40	35.00	15.88	20.60	8.27	53.75	55.55	3.66	6120
-	D160010011	25.40	13.05	15.75	20.60	8.14	30.10	36.50	2.57	6120
-	D560010001	88.90	53.34	53.98	80.20	34.32	117.80	130.00	172.54	100000
-	SP1729	58.94	21.30	18.26	26.50	10.19	40.85	44.50	2.48	4550

*Straight Contour Chains

STRAIGHT SIDE PLATE CHAINS - EUROPEAN SERIES



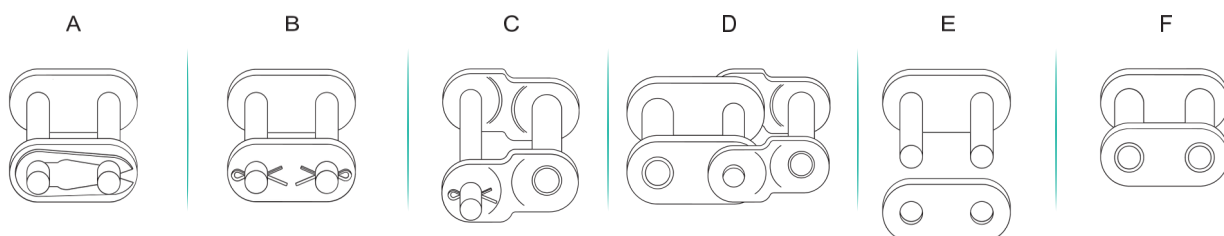
ANSI B 29.1



The straight plate chains are identical to the corresponding European series standard chains except for the straight side plates. The chain have higher fatigue resistance than the standard chains.

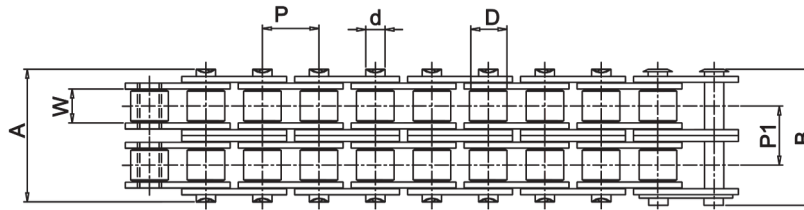
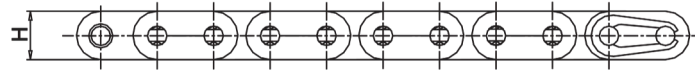
Single Strand

Int. Ref. No.	DIAMOND Chain No.	Pitch (P)	Width Between Inner Plates (W) (Min)	Roller Dia (D) (Max)	Bearing Pin Dia (d) (Max)	Plate Height (H) (Max)	Width Over Bearing Pin (A) (Max)	Width Over Joint Fasteners (B) (Max)	Projected Bearing Area Sq.cm	Avg. Weight per Meter (Kg)	Tensile Strength (Kgf) (Min)	Spares Availability
C08B	D083 01 ST 01	12.70	7.75	8.51	4.45	11.80	17.00	20.90	0.50	0.75	1840	A,B,C,D
C10B	D101 01 ST 01	15.875	9.65	10.16	5.08	14.70	19.60	23.70	0.67	0.98	2290	A,B,C,D
C12B	D120 01 ST 01	19.05	11.68	12.07	5.72	16.10	22.70	27.30	0.88	1.24	2960	A,B,C,D
C16B	D160 01 ST 01	25.40	17.02	15.88	8.27	24.10	36.10	41.50	2.07	3.30	6120	A,B,C,D
	D160 01 ST 02	25.40	17.02	15.88	8.27	20.58	36.10	41.50	2.07	3.30	6120	A,B,C,D
C20B	D200 01 ST 01	31.75	19.56	19.05	10.19	26.40	43.20	49.30	2.91	3.91	9690	A,B,C,D
C24B	D240 01 ST 01	38.10	25.40	25.40	14.63	33.40	53.40	60.00	5.49	7.16	16310	B,C,D
C28B	D280 01 ST 01	44.45	30.99	27.94	15.90	37.00	65.10	72.50	7.26	8.79	20390	B,C,D
C32B	D320 01 ST 01	50.80	30.99	29.21	17.81	42.20	67.40	75.30	8.05	10.42	25500	B,C,D



Note : Spares E & F are available for all models

STANDARD ROLLER CHAINS



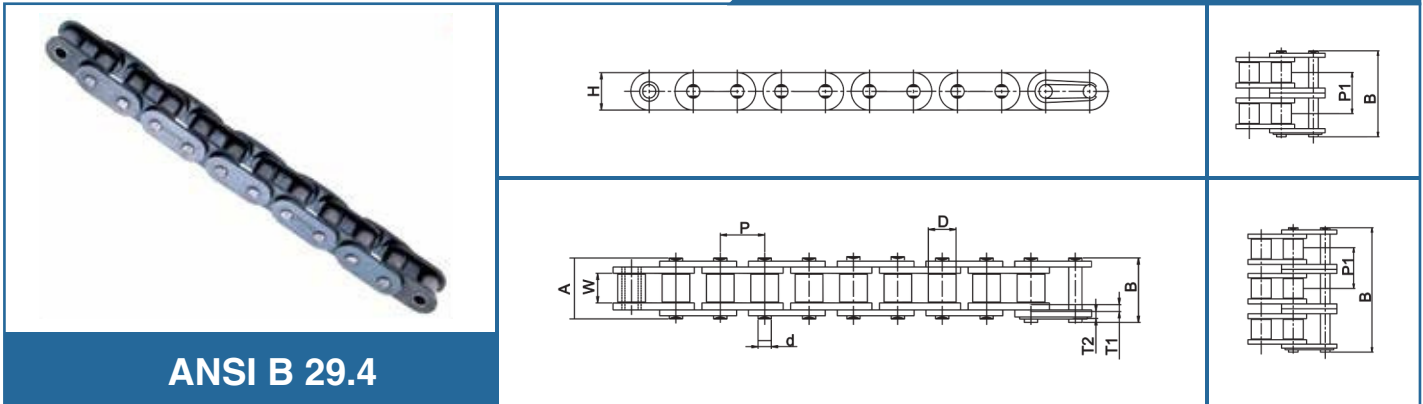
Double Strand

Int. Ref. No.	DIAMOND Chain No.	Pitch (P)	Width Between Inner Plates (W) (Min)	Roller Dia (D) (Max)	Bearing Pin Dia (d) (Max)	Plate Height (H) (Max)	Width Over Bearing Pin (A) (Max)	Width Over Joint Fasteners (B) (Max)	Transverse Pitch	Projected Bearing Area Sq.cm	Avg. Weight per Meter (Kg)	Tensile Strength (Kgf) (Min)	Spares Availability
C08B	D083 02 ST 01	12.70	7.75	8.51	4.45	11.81	31.00	34.90	13.92	1.00	1.44	3270	A,B,C,D
C10B	D101 02 ST 01	15.875	9.65	10.16	5.08	14.73	36.20	40.30	16.59	1.34	1.97	4540	A,B,C,D
C12B	D120 02 ST 01	19.05	11.68	12.07	5.72	16.13	42.20	46.80	19.46	1.76	2.27	5900	A,B,C,D
C16B	D160 02 ST 01	25.40	17.02	15.88	8.27	24.10	68.00	73.40	31.88	4.14	5.81	11600	A,B,C,D
	D160 02 ST 02	25.40	17.02	15.88	8.27	20.58	68.00	73.40	31.88	4.14	5.78	11600	A,B,C,D
C20B	D200 02 ST 01	31.75	19.56	19.05	10.19	26.42	79.70	85.80	36.45	5.82	7.72	17330	A,B,C,D
C24B	D240 02 ST 01	38.10	25.40	25.40	14.63	33.40	101.80	108.40	48.36	10.98	14.15	28550	B,C,D
C28B	D280 02 ST 01	44.45	30.99	27.94	15.90	37.08	132.10	132.10	59.56	14.52	17.39	36700	B,C,D
C32B	D320 02 ST 01	50.80	30.99	29.21	17.81	42.29	133.90	133.90	58.55	16.10	20.63	45880	B,C,D

Triple Strand

Int. Ref. No.	DIAMOND Chain No.	Pitch (P)	Width Between Inner Plates (W) (Min)	Roller Dia (D) (Max)	Bearing Pin Dia (d) (Max)	Plate Height (H) (Max)	Width Over Bearing Pin (A) (Max)	Width Over Joint Fasteners (B) (Max)	Transverse Pitch	Projected Bearing Area Sq.cm	Avg. Weight per Meter (Kg)	Tensile Strength (Kgf) (Min)	Spares Availability
C08B	D083 03 ST 01	12.70	7.75	8.51	4.45	11.81	44.90	48.80	13.92	1.50	2.03	4850	A,B,C,D
C10B	D101 03 ST 01	15.875	9.65	10.16	5.08	14.73	52.80	56.90	16.59	2.01	2.72	6810	A,B,C,D
C12B	D120 03 ST 01	19.05	11.68	12.07	5.72	16.13	61.70	66.30	19.46	2.64	3.42	8850	A,B,C,D
C16B	D160 03 ST 01	25.40	17.02	15.88	8.27	24.10	99.90	105.30	31.88	6.21	8.83	17400	A,B,C,D
	D160 03 ST 02	25.40	17.02	15.88	8.27	20.58	99.90	105.30	31.88	6.21	8.86	17400	A,B,C,D
C20B	D200 03 ST 01	31.75	19.56	19.05	10.19	26.42	116.10	122.20	36.45	8.73	11.53	25490	A,B,C,D
C24B	D240 03 ST 01	38.10	25.40	25.40	14.63	33.40	150.20	156.80	48.36	16.47	21.15	43330	B,C,D
C28B	D280 03 ST 01	44.45	30.99	27.94	15.90	37.08	184.30	191.70	59.56	21.78	26.00	54030	B,C,D
C32B	D320 03 ST 01	50.80	30.99	29.21	17.81	42.29	184.50	192.40	58.55	24.15	30.54	68300	B,C,D

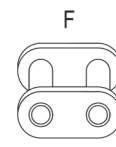
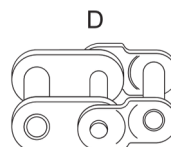
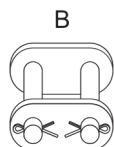
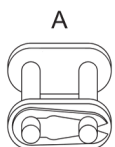
STRAIGHT SIDE PLATE CHAINS - AMERICAN SERIES



ANSI B 29.4

This straight side plate chains are identical to the corresponding American standard chains except for the straight side plates. The chains have higher fatigue resistance than the standard chains

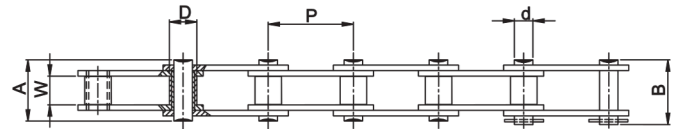
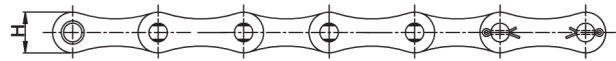
Int. Ref. No.	DIAMOND Chain No.	Pitch (P)	Width Between Inner Plates (W) (Min)	Roller Dia (D) (Max)	Bearing Pin Dia (d) (Max)	Plate Height (H) (Max)	Plate Thickness		Width Over Bearing Pin (A) (Max)	Width Over Joint Fasteners (B) (Max)	Transverse Pitch (P1)	Avg. Weight per Meter (Kg)	Tensile Strength (Kgf) (Min)	Spares Availability
							IP (T1)	OP (T2)						
40-1	D08A01ST01	12.70	7.85	7.92	3.98	12.00	1.50	1.50	17.80	21.70	14.38	0.67	1440	A,B,C,D
40-2	D08A02ST01								32.30	38.20		1.32	2820	A,B,C,D
40-3	D08A03ST01								46.70	50.80		1.98	4320	A,B,C,D
50-1	D10201ST02	15.875	9.40	10.16	5.09	15.00	2.00	2.00	21.80	25.90	18.11	1.59	2270	A,B,C,D
50-2	D10202ST02								39.90	44.00		2.06	4440	A,B,C,D
50-3	D10203ST02								57.90	62.00		3.07	6810	A,B,C,D
60-1	D12101ST01	19.05	12.58	11.91	5.94	18.00	2.39	2.39	26.90	31.50	22.78	1.76	3240	A,B,C,D
60-2	D12102ST01								49.60	53.80		3.12	6360	A,B,C,D
60-3	D12103ST01								72.60	77.20		4.67	9730	A,B,C,D
80-1	D16101ST01	25.40	15.75	15.88	7.94	24.10	3.20	3.20	33.50	38.90	29.29	3.23	5780	A,B,C,D
80-2	D16102ST01								62.70	68.10		5.20	11560	A,B,C,D
80-3	D16103ST01								91.90	97.10		7.77	17340	A,B,C,D
100-1	D20101ST01	31.75	18.90	19.05	9.54	30.16	4.00	4.00	41.10	47.20	35.76	4.01	9030	A,B,C,D
100-2	D20102ST01								77.90	83.10		7.93	18060	A,B,C,D
100-3	D20103ST01								113.00	119.10		11.86	27090	A,B,C,D
120-1	D24101ST01	38.10	25.22	22.23	11.11	36.20	4.70	4.70	50.80	57.40	45.44	5.74	12950	B,C,D
120-2	D24102ST01								96.30	102.90		11.37	25900	B,C,D
120-3	D24103ST01								141.03	147.60		17.01	38850	B,C,D
160-1	D32101ST01	50.80	31.55	28.57	14.29	48.20	6.30	6.30	65.20	73.60	58.55	7.47	23130	B,C,D
160-2	D32102ST01								124.00	131.90		14.81	46250	B,C,D
160-3	D32103ST01								182.00	189.90		22.16	69370	B,C,D



Note : Spares E & F are available for all models



ISO 1275/BS 4687/DIN 8181



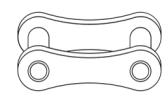
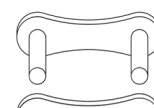
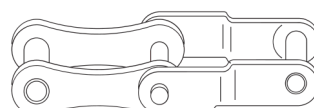
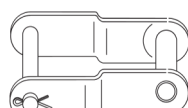
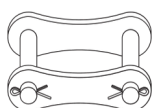
The pitch of the chains is twice that of standard chains while other components have the same dimensions of the corresponding standard chains. These costeffective chains are used in light load drives typically agriculture.

American Series

Int. Ref. No.	DIAMOND Chain No.	Pitch (P)	Width Between Inner Plates (W) (Min)	Roller Dia (D) (Max)	Bearing Pin Dia (d) (Max)	Plate Height (H) (Max)	Width Over Bearing Pin (A) (Max)	Width Over Joint Fasteners (B) (Max)	Avg. Weight per Meter (Kg)	Tensile Strength (Kgf) (Min)
A2040	E08A01	25.40	7.85	7.92	3.96	11.65	17.80	21.70	0.41	1440
A2050	E10201	31.75	9.40	10.16	5.08	13.90	21.80	25.90	0.66	2270
A2060	E12101	38.10	12.58	11.91	5.94	18.10	26.90	31.50	1.03	3240
A2080	E16101	50.80	15.75	15.88	7.92	24.10	33.50	38.90	1.70	5780
A2100	E20101	63.50	18.90	19.05	9.53	29.02	41.10	47.20	2.55	9030
A2120	E24101	76.20	25.22	22.23	11.10	34.82	50.80	57.20	4.06	12950

European Series

Int. Ref. No.	DIAMOND Chain No	Pitch (P)	Width Between Inner Plates (W) (Min)	Roller Dia (D) (Max)	Bearing Pin Dia (d) (Max)	Plate Height (H) (Max)	Width Over Bearing Pin (A) (Max)	Width Over Joint Fasteners (B) (Max)	Avg. Weight per Meter (Kg)	Tensile Strength (Kgf) (Min)
208B	E083 01	25.40	7.75	8.51	4.45	11.65	17.00	20.90	0.47	1840
210B	E101 01	31.75	9.65	10.16	5.08	13.90	19.60	23.70	0.68	2290
212B	E120 01	38.10	11.68	12.07	5.72	15.30	22.70	27.30	0.80	2960
216B	E160 01	50.80	17.02	15.88	8.27	20.65	36.10	41.50	1.42	6120
220B	E200 01	63.50	19.56	19.05	10.19	26.42	43.20	49.30	2.36	9690
224B	E240 01	76.20	25.40	25.40	14.63	33.40	53.40	60.00	4.70	16310
228B	E280 01	88.90	30.99	27.94	15.90	37.00	65.10	72.50	6.23	20390
232B	E320 01	101.60	30.99	29.21	17.81	42.20	67.40	75.30	6.72	25500

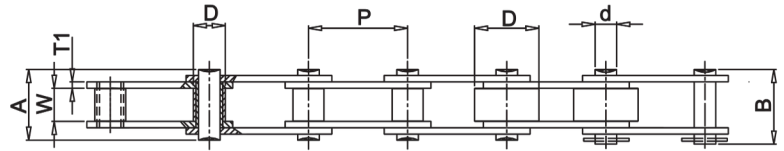
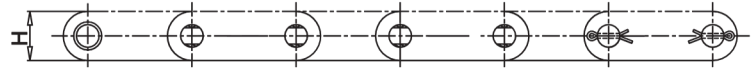


STANDARD ROLLER CHAINS

DOUBLE PITCH CONVEYOR CHAINS - AMERICAN SERIES



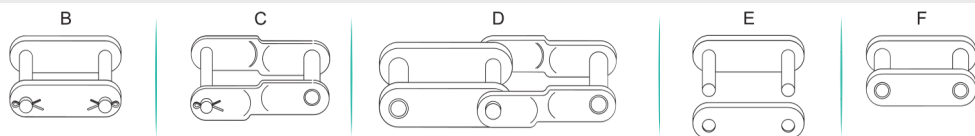
ISO 1275/ANSI B29.4



The chains are similar to double pitch power transmission chains, but the Link Plates have a straight contour and can be produced with **standard** or **large rollers**. They are used in conveyor applications where loads are low and speeds are moderate.

Int. Ref. No.	DIAMOND Chain No.	Pitch (P)	Width Between Inner Plates (W) (Min)	Roller Dia (D) (Max)	Bearing Pin Dia (d) (Max)	Plate Height (H) (Max)	Width Over Bearing Pin (A) (Max)	Width Over Joint Fasteners (B) (Max)	Avg. Weight per Meter (Kg)	Tensile Strength (Kgf) (Min)
C 2040	A 08A 01	25.40	7.85	7.92	3.96	11.66	17.80	21.70	0.49	1440
C 2042	A 08A 02			15.88					0.84	
C 2050	A 102 01	31.75	9.40	10.16	5.08	14.58	21.80	25.90	0.81	2270
C 2052	A 102 02			19.05					1.28	
C 2060	A 121 01	38.10	12.58	11.91	5.94	18.06	26.90	31.50	1.20	3240
C2062	A 121 02			22.23					1.92	
C2060H	A 122 01	38.10	12.58	11.91	5.94	18.06	31.20	35.80	1.50	3240
C2062H	A 122 02			22.23					1.92	
C2080	A 161 01	50.80	15.75	15.88	7.92	24.05	33.50	38.90	2.10	5780
C2082	A 161 02			28.58					3.18	
C2080H	A 162 01	50.80	15.75	15.88	7.92	24.05	38.00	43.40	2.52	5780
C2082H	A 162 02			28.58					3.60	
C2100	A 201 01	63.50	18.90	19.05	9.53	29.26	41.10	47.20	3.21	9030
C2102	A 201 02			39.67					5.45	
C2100H	A 202 01	63.50	18.90	19.05	9.53	29.26	43.40	46.70	3.56	9030
C2102H	A 202 02			39.67					5.38	
C2120	A 241 01	76.20	25.22	22.23	11.10	36.20	50.80	57.80	4.66	12950
C2122	A 241 02			44.45					7.66	
C2120H	A 242 01	76.20	25.22	22.23	11.10	36.20	55.10	61.70	5.26	12950
C2122H	A 242 02			44.45					8.26	
C2160	A 321 01	101.60	31.55	28.58	14.27	48.26	65.50	73.40	8.15	23130
C2162	A 321 02			57.15					13.00	
C2160H	A 322 01	101.60	31.55	28.58	14.27	48.26	70.00	77.90	9.06	23130
C2162H	A 322 02			57.15					12.77	

*Select roller diameter for ordering.



Note : Above spares are available for all models