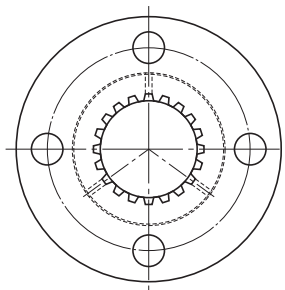


Model DPM



Spline Nut Model No.	Outer dimensions			Spline nut dimensions						
	Outer diameter		Length L	Flange diameter D ₁	H	B	PCD	r	F	d
	D	Tolerance h9								
DPM 1220	22	0 -0.052	20	44	6	5.4	31	1.5	7	1.5
DPM 1230			30							
DPM 1520	22	0 -0.052	20	44	6	5.4	31	1.5	7	1.5
DPM 1530			30							
DPM 1723	28	0 -0.052	23	51	7	6.6	38	1.5	8	1.5
DPM 1735			35							
DPM 2028	32	0 -0.062	28	56	7	6.6	42	1.5	10.5	1.5
DPM 2040			40							
DPM 2536	36	0 -0.062	36	61	8	6.6	47	2	14	2
DPM 2550			50							
DPM 3040	44	0 -0.074	40	76	10	9	58	2	15	2
DPM 3056			56							
DPM 3544	52	0 -0.074	44	84	10	9	66	2.5	17	2.5
DPM 3560			60							
DPM 4050	58	0 -0.074	50	98	12	11	76	2.5	19	3
DPM 4068			68							
DPM 4555	64	0 -0.074	55	104	12	11	80	2.5	21.5	3
DPM 4575			75							
DPM 5060	68	0 -0.074	60	109	12	11	85	2.5	24	3.5
DPM 5080			80							

Note) The dynamic permissible torque (T) indicates the torque at which the contact surface pressure on the spline teeth is 9.8 N/mm².

Clearance in the rotational direction: $\alpha \leq 20'$ MAX

If multiple spline nuts are to be mounted on a single shaft, please note that the locations of flange mounting holes and key grooves on the respective spline nuts may vary slightly.

Avoid specifications that would require fitting multiple spline nuts to a single housing.

Model number coding

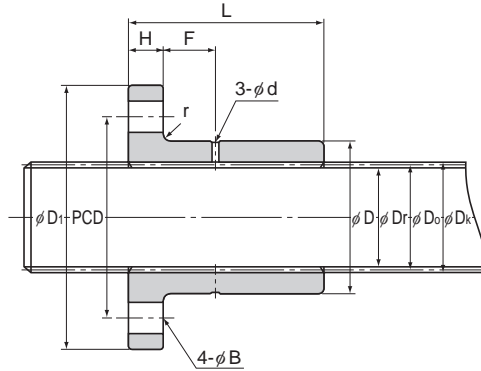
Combination of spline nut and spline shaft

2 DPM2040 +360L

Overall spline shaft length (in mm)

Model No. of spline nut

Number of spline nuts used on the same shaft



Unit: mm

Spline shaft	Spline details					Standard shaft length	Maximum shaft length	Dynamic permissible torque T_{Note} N•m	Mass	
	Model No.	Pitch diameter D_0	Major diameter D_s	Minor diameter D_r	Number of teeth Z				Spline Nut g	Spline Shaft kg/m
SS 12	12	12.8	10.9	16	1500	1500	17.6	80	0.9	
							26.5	90		
SS 15	15	16.1	13.5	16	1500	2000	30.4	70	1.4	
							46.1	80		
SS 17	17	18.2	15.4	16	1500	2000	43.1	120	1.7	
							65.7	150		
SS 20	20	21.5	18.3	16	1500	3200	70.6	160	2.5	
							100	200		
SS 25	25	26.9	22.6	16	1500	3200	152	220	3.8	
							211	270		
SS 30	30	31.8	28.2	20	1500	3200	212	400	5.5	
							297	480		
SS 35	35	37.1	32.8	20	1500	3200	325	560	7.5	
							443	670		
SS 40	40	42.4	37.5	20	1500	3200	480	830	9.8	
							673	970		
SS 45	45	47.7	42.1	20	1500	3200	680	980	12.4	
							927	1110		
SS 50	50	53	46.8	20	1500	3200	910	1080	15.4	
							1220	1290		

Spline Nut

Model number coding

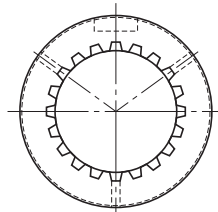
Spline shaft

SS20 +1500L

Overall spline shaft length (in mm)

Model number of spline shaft

Model DP



Spline Nut Model No.	Outer dimensions			Spline nut dimensions					
	Outer diameter		L	Keyway dimensions					
	D	Tolerance h9		0	b	Tolerance N9	t	ℓ	d
DP 12	22	-0.052	22	4	-0.030	2	16	1.5	1
DP 15	22		22	4		2	16	1.5	1
DP 17	28		26	5		2.5	18	1.5	1
DP 20	32	-0.062	31	7	-0.036	2.5	22	1.5	1
DP 25	36		40	7		2.5	26	2	1
DP 30	44		45	10		4	32	2	1.5
DP 35	52	-0.074	49	12	-0.043	4.5	40	2.5	1.5
DP 40	58		57	15		5	42	3	1.5
DP 45	64		62	15		5	48	3	1.5
DP 50	68		67	15		5	52	3.5	1.5

Note) The dynamic permissible torque (T) indicates the torque at which the contact surface pressure on the spline teeth is 9.8 N/mm².

Clearance in the rotational direction: $\alpha \leq 20'$ MAX

If multiple spline nuts are to be mounted on a single shaft, please note that the locations of flange mounting holes and key grooves on the respective spline nuts may vary slightly.

Avoid specifications that would require fitting multiple spline nuts to a single housing.

Model number coding

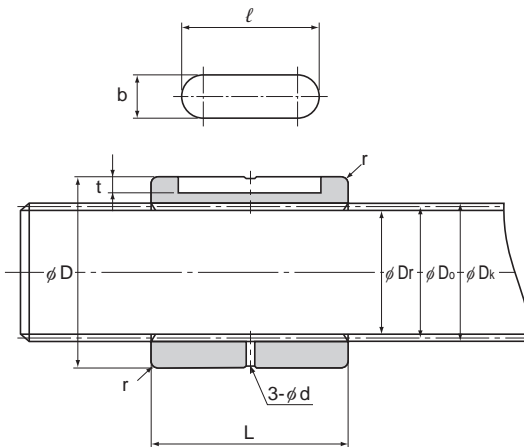
Combination of spline nut and spline shaft

2 DP20 +360L

Overall spline shaft length (in mm)

Model No. of spline nut

Number of spline nuts used on the same shaft



Unit: mm

Spline shaft	Spline details					Standard shaft length	Maximum shaft length	Dynamic permissible torque T^{Note} N•m	Mass	
	Model No.	Pitch diameter D_o	Major diameter D_s	Minor diameter D_r	Number of teeth Z				Spline Nut g	Spline Shaft kg/m
SS 12	12	12.8	10.9	16	1500	1500	19.6	40	0.9	
SS 15	15	16.1	13.5	16	1500	2000	33.3	30	1.4	
SS 17	17	18.2	15.4	16	1500	2000	48	65	1.7	
SS 20	20	21.5	18.3	16	1500	3200	77.5	100	2.5	
SS 25	25	26.9	22.6	16	1500	3200	169	135	3.8	
SS 30	30	31.8	28.2	20	1500	3200	238	230	5.5	
SS 35	35	37.1	32.8	20	1500	3200	362	360	7.5	
SS 40	40	42.4	37.5	20	1500	3200	547	510	9.8	
SS 45	45	47.7	42.1	20	1500	3200	767	640	12.4	
SS 50	50	53	46.8	20	1500	3200	1020	710	15.4	

Spline Nut

Model number coding

Spline shaft

SS20 +1500L

Overall spline shaft length (in mm)

Model number of spline shaft