

## ABOUT US



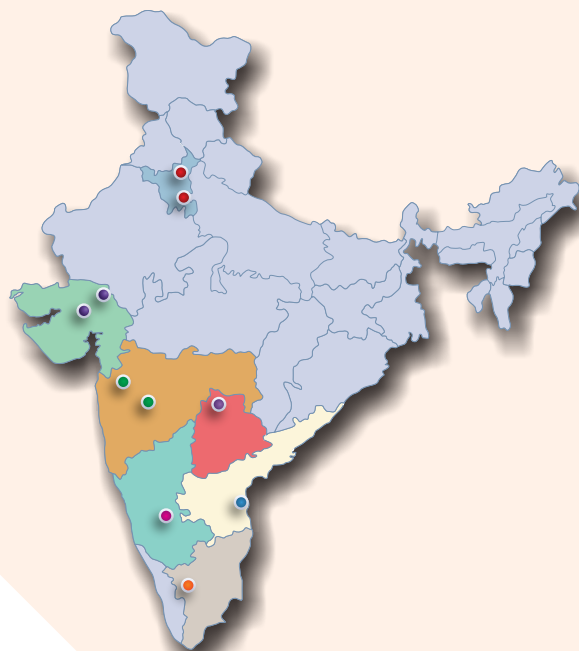
SEIMITSU Factory Automation Pvt. Ltd., established in 2010, has been delivering comprehensive automation solutions with exceptional performance for over a decade. The company has expanded into diverse sectors, including robotics, bearings, aerospace, FMCG, renewable energy, electronic semiconductors, and mobile manufacturing while maintaining strong footholds in traditional engineering industries such as machine tools, automation, automotive, pharmaceuticals, consumer goods, injection molding, and agriculture. SEIMITSU continues to serve customers worldwide with its unwavering commitment to quality, innovation, and excellence. We also provide full technical solutions tailored to meet industry-specific needs.

## ACHIEVEMENTS

4000 + SATISFIED CUSTOMERS



## OUR LOCATIONS



### HEAD OFFICE

**SEIMITSU Factory Automation Private Limited**  
Seimitsu Tower, Plot No. A-51, H Block, MIDC Industrial Area, Near  
Auto- Cluster, Opp. Devi Industries, Pimpri- Chinchwad, Pune- 411018  
Mob: +91 9028121211 / 020 – 46212700

### OUR BRANCHES

<b>SEIMITSU North Zone (Delhi NCR)</b> E-85, Jeevan Niketan, Paschim-Vihar, New Delhi – 110063 Mob : +91 – 7019590158 / 020 – 46212700	<b>SEIMITSU North Zone (Faridabad)</b> House No. 465, Sector No. 17, Old Faridabad – 121002. Mob : +91 – 8956398368 / 020 – 46212700
<b>SEIMITSU West Zone (Surat)</b> 67, Shrinath Society 2, Nilgiri, Udhana, Surat – 394210. Mob : +91 – 8956406829 / 020 – 46212700	<b>SEIMITSU West Zone (Ahmedabad)</b> 29, Kalp Industrial Estate, Nr. Sahitya Business Park, Nikol Ring Road, Nikol, Ahmedabad – 382350. Mob : +91 – 8799928229 / 020-46212700
<b>SEIMITSU West Zone (Kolhapur)</b> Plot No. 36/36, Y P Nagar, Kolhapur, Maharashtra – 416012. Contact No. 8956193723	<b>SEIMITSU West Zone (Mumbai)</b> Manish Kunj Lobo Society, No.2/9, Samta Nagar, Kanjur Marg East, Mumbai – 400042. Mob : +91 – 7887882317 / 020 – 46212700
<b>SEIMITSU South Zone (Hyderabad)</b> LIGH-266, HB Colony, Meerpet, Le Moulali, Hyderabad, Telangana – 500040. Mob : +91 – 8956386224 / 020 – 46212700	<b>SEIMITSU South Zone (Bangalore)</b> C, 10, KSSIDC, Bommasandra Industrial Area, Bommasandra, Bangalore – 560099. Mob : +91 – 8956067119 / 020 – 46212700
<b>SEIMITSU South Zone (Chennai)</b> No. 23, Sakthi Vinayagar Koil St, Rajiv Gandhi, Nagar, Nesapakkam, Chennai – 600078. Mob : +91 – 9884070288 / 020 – 46212700	<b>SEIMITSU South Zone (Coimbatore)</b> 4 / 29, Cheran Nagar , Ondipudur Coimbatore – 641016. Mob : +91 – 8956193724 / 020 – 46212700

Email : [sales@seimitsu.in](mailto:sales@seimitsu.in); [haider@seimitsu.in](mailto:haider@seimitsu.in); [www.seimitsu.in](http://www.seimitsu.in)  
Ph.: 020 – 46212700 Mob: – +91 9028121211

**SEIMITSU**  
ACCESS to a BRIGHTER FUTURE

### OUR GLOBAL PARTNER

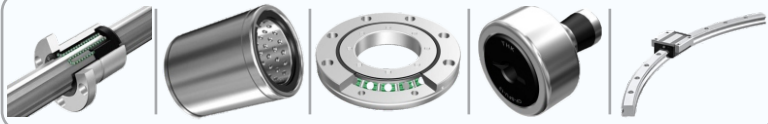




## OUR PRODUCTS



**THK (Japan)** – Since 1972, specializes in LM Guides, Ball Screws, Cam-follower, Cross Roller Rings and more, offering precision linear motion solutions.



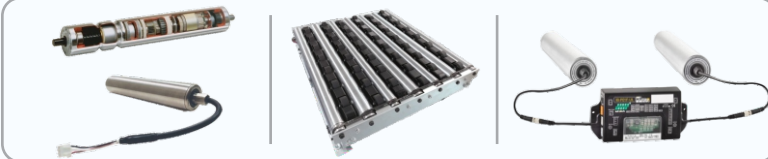
**SMD (Taiwan)** – Specializes in the R&D and production of servo gearboxes, including Planetary, SRV series, Right-Angle, Hollow Rotary, Harmonic, Rack-and-Pinion, AGV Wheels and Robotic Joints.



**Airtac (Taiwan)** – Established in 1988, Offers a range of pneumatic products, including solenoid valves, pneumatic cylinders, electronic sensors, clamps, fittings and more.



**ITO DENKI (Japan)** – Founded in 1946, ITOH DENKI specializes in AC and DC Power Rollers and Conveyor Modules for efficient material handling solutions.



**TOYO (Taiwan)** – Founded in 2000, TOYO Robotics is a global leader in manufacturing high-quality Electric Actuators, Cartesian Robots, Desktop Robots, Electric Cylinders, Grippers and Rod-Type Actuators.



**KHK (Japan)** – KOHARA Gear Industries, established in 1935, is a leader in Stock Internal Gears, offering Spur, Helical, Bevel, Worm Gears, Plastic Gears, Gear Racks & Pinion and Bevel Gearboxes.



**Sanyo Denki (Japan)** – Established in 1927, Sanyo Denki specializes in high-precision AC/DC Servo Motors, Motion Controllers and Stepping Motors, delivering exceptional torque and speed for robotics, machine tools, semiconductor equipment.



**CKD (Japan)** – Since 1943, CKD Pneumatics has been a leading manufacturer of Pneumatic Cylinders, Valves, Controllers, Sensors and more.



**NBK (Japan)** – Established in 1560, is a pioneering company renowned for its world-class couplings, special screws and precision machine elements.



**NIEDAX (Germany)** – Established in 1920, NIEDAX supplies complete system solutions for ceiling, wall, and floor installations, offering high-quality products like cable trays, ladders, long-span trays, vertical trays, mesh trays, and support brackets designed with the right materials and surface properties for seamless use.



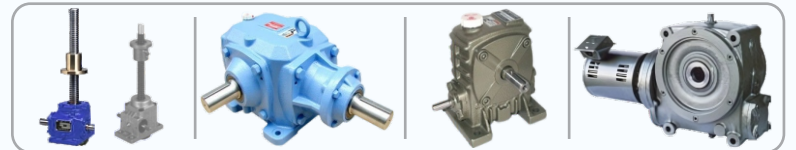
**OILES (Japan)** – Founded in 1952, OILES Corporation manufactures eco-friendly Plastic, Multi-Layer, and Metallic Bearings that require little to no lubrication.



**ZIMMER (Germany)** – Established in 1980, ZIMMER Group is a leading manufacturer of automation products, offering Handling, Damping, linear, Machine Tooling and System Technology.



**MAKISHINKO (Japan)** – Established in 1963, MAKISHINKO is a premium manufacturer of Screw Jacks, Speed Reducers, Gearboxes and Geared Motors.



**YAMAHA (Japan)** – YAMAHA Industrial Robots, established in 1981, has delivered cutting-edge automation solutions, including the Pick & Place Robots, Linear Conveyor Modules and SCARA Robots for high-performance, cost-effective operations.



**DESTACO (USA)** – Founded in 1915, DESTACO, a Dover company, specializes in high-performance automation solutions, including clamping, gripping, positioning and robotic tooling for various applications.



**TSUBAKI (Japan)** – Founded in 1917, TSUBAKI is a leading manufacturer of power transmission components, including Chains, Cable Carriers, Motion Control and Material Handling Systems.

