



FURNITURE APPLICATIONS

MOTECK[®]
MOTORIZE OUR WORLD



Control



TXE



TX31



TX32

Control Box



CBT2



CF31



CF32

Actuator



FD10



FD20



FD40

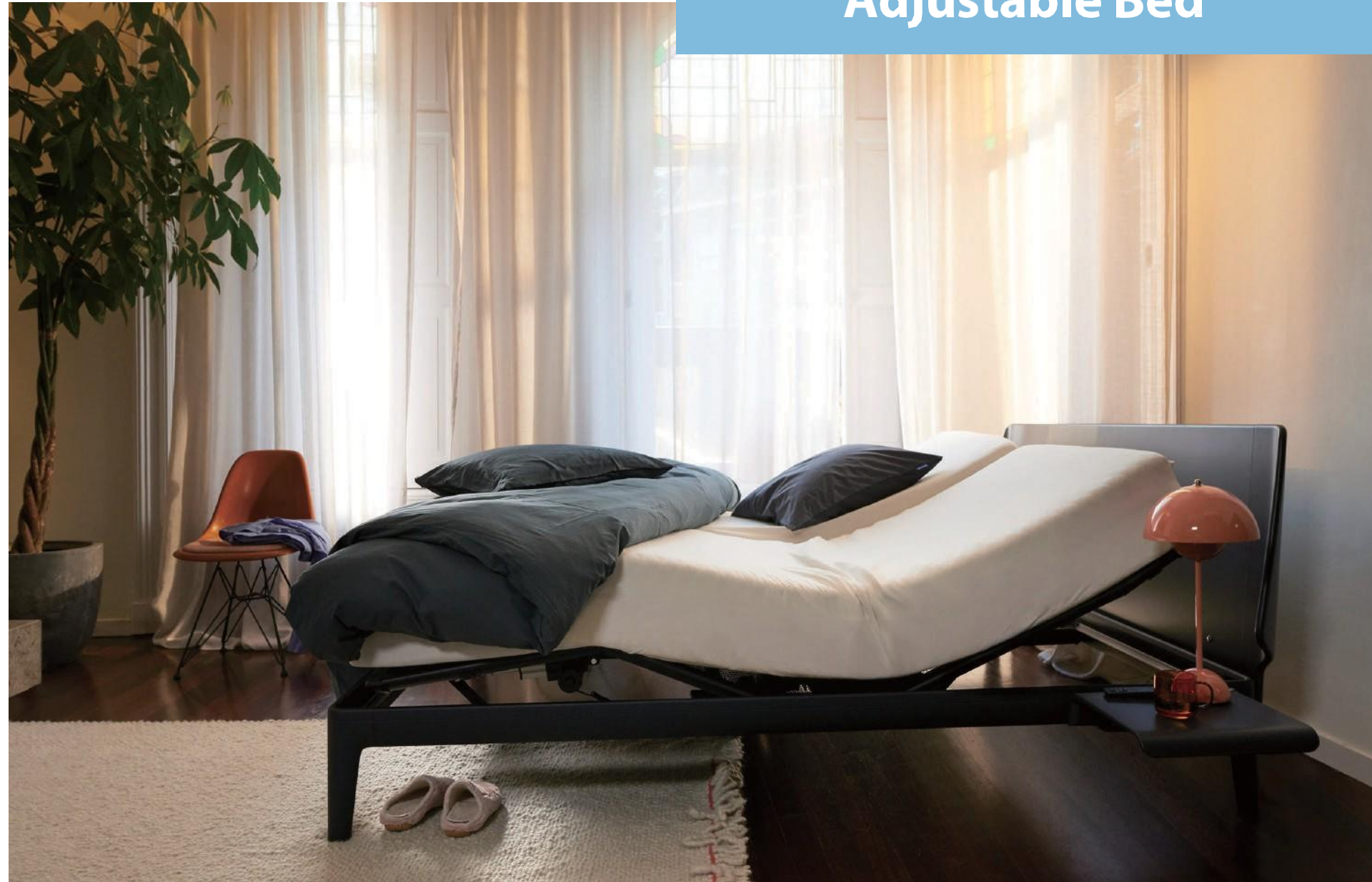


FD60



FD61

Adjustable Bed



1-Motor System



2-Motor System



3-Motor System

Recliner



Control



HZ01



HB



H2B

Actuator



FD20



FD60



FD61



BD21



BD23

Power Supply



DPB-58-2920-C8





FD10

Input: 24V DC
Max. Push Load: 1000N
Max. Pull Load: 500N
Max. Speed at No Load: 15.1mm/s
Stroke: 50~300mm
Duty Cycle: 10%
Noise Level: ≤50dB

IP Level: IP42 (Static; non-action)
Min. Installation Dimension: 120mm+Stroke
Option:
 Hall-effect sensor
 Mechanical push only extension tube
 PTC thermistor for thermal protection
 With direct-cut cable to work without control box



CF31



CF32



CF12H

Model No.	Max. Push Load (N)	Max. Pull Load (N)	Typical Speed (mm/s)		Typical Current (A)	
			No Load	Full Load	No Load	Full Load
FD10-24SF4...	1000	500	8.4	5.5	0.5	1.5
FD10-24SF6...	1000	500	11.5	6.2	0.5	1.7
FD10-24SF8...	500	500	15.1	9.8	0.5	1.3

FD20

Input: 24V DC
Max. Push Load: 2000N
Max. Pull Load: 2000N
Max. Speed at No Load: 33.3mm/s
Stroke: 50~300mm
Duty Cycle: 10%
Noise Level: ≤53dB

IP Level: IP42 (Static; non-action)
Min. Installation Dimension: 135mm+Stroke
Option:
 Hall-effect sensor
 Mechanical push only extension tube
 Mechanical brake
 With direct-cut cable to work without control box



CF31



CF32



CF12H

Model No.	Max. Push/Pull Load (N)	Self-locking ability (N)	Typical Speed (mm/s)		Typical Current (A)	
			No Load	Full Load	No Load	Full Load
FD20-24-A3...	2000	2000	4.3	3.3	0.3	2.0
FD20-24-A4...	2000	1500	5.6	4.0	0.3	2.3
FD20-24-K4...	2000	1000	11.1	5.6	0.3	2.5
FD20-24-A8...	1000	700	11.1	6.2	0.3	2.0
FD20-24-K8...	1000	700	22.2	11.5	0.3	2.5
FD20-24-AC...	1000	500	16.6	8.7	0.3	2.3
FD20-24-KC...	500	300	33.3	21.0	0.3	2.0

FD40

Input: 24V DC
Max. Push Load: 4000N
Max. Pull Load: 2000N
Max. Speed at No Load: 30.3mm/s
Stroke: 50~400mm
Duty Cycle: 10%
Noise Level: ≤50dB

IP Level: IP42 (Static; non-action)
Min. Installation Dimension: 110mm+Stroke
Option:
 Enhanced motor
 Hall-effect sensor
 Mechanical push only extension tube
 PTC thermistor for thermal protection
 With direct-cut cable to work without control box



CF31



CF32



CF12H



Motor on the right side



Motor on the left side

Model No.	Max. Push Load (N)	Max. Pull Load (N)	Typical Speed (mm/s)		Typical Current (A)	
			No Load	Full Load	No Load	Full Load
FD40-24DF4...	1500	1500	7.7	5.8	0.3	2.5
FD40-24DF8...	500	500	16.0	13.5	0.3	1.8
FD40-24EF4...	4000	2000	8.4	4.0	0.2	3.3
FD40-24EF6...	3000	2000	11.9	6.3	0.2	3.3
FD40-24EF8...	2500	2000	15.9	8.1	0.3	3.3
FD40-24EH8...	1500	1500	30.3	14.3	0.4	3.3

FD60

Input: 12 / 24V DC
Max. Push Load: 6000N
Max. Pull Load: 4000N
Max. Speed at No Load: 33.3mm/s
Stroke: 50~300mm
Duty Cycle: 10%
Noise Level: ≤50dB

IP Level: IP42 (Static; non-action)
Min. Installation Dimension: 160mm+Stroke
Option:
 Hall-effect sensor
 Mechanical push only extension tube
 Mechanical brake
 With direct-cut cable to work without control box



CF31



CF32



CF12H

Model No.	Max. Push Load (N)	Max. Pull Load (N)	Self-locking Ability (N)	Typical Speed (mm/s)		Typical Current (A)			
				No Load	Full Load	No Load		Full Load	
						12V	24V	12V	24V
FD60-XX-A4...	6000	4000	5000	4.2	2.9	1.2	0.6	5.4	2.7
FD60-XX-F4...	5000	4000	5000	5.5	4.4	1.2	0.6	5.6	2.8
FD60-XX-A6...	4000	4000	2500	6.2	3.8	1.2	0.6	5.6	2.8
FD60-XX-F8...	3000	3000	2000	11.0	8.2	1.2	0.6	5.8	2.9
FD60-XX-AG...	1500	1500	700	16.6	12.2	1.2	0.6	5.6	2.8
FD60-XX-KG...	750	750	0	33.3	23.5	1.2	0.6	5.4	2.7



FD61

Input: 12 / 24V DC
Max. Push Load: 6000N
Max. Pull Load: 4000N
Max. Speed at No Load: 33.3mm/s
Stroke: 50~300mm
Duty Cycle: 10%
Noise Level: ≤50dB

IP Level: IP42 (static; non-action)
Min. Installation Dimension: 150mm+Stroke
Option:
 Hall-effect sensor
 Mechanical push only extension tube
 Mechanical brake
 With direct-cut cable to work without control box



CF31



CF32



CF12H

Model No.	Max. Push Load (N)	Max. Pull Load (N)	Self-locking Ability (N)	Typical Speed (mm/s)		Typical Current (A)			
				No Load	Full Load	No Load		Full Load	
						12V	24V	12V	24V
FD61-XX-A4...	6000	4000	5000	4.2	2.9	1.2	0.6	5.4	2.7
FD61-XX-A6...	4000	4000	2500	6.2	3.8	1.2	0.6	5.6	2.8
FD61-XX-A8...	3000	3000	2000	8.3	5.0	1.2	0.6	5.6	2.8
FD61-XX-AG...	1500	1500	700	16.6	12.2	1.2	0.6	5.6	2.8
FD61-XX-KG...	750	750	0	33.3	23.3	1.2	0.6	5.4	2.7

MK33

Input: 24V DC
Max. Push Load: 6000N
Max. Pull Load: 3000N
Max. Speed at No Load: 4.2mm/s
Stroke: 50~300mm
Duty Cycle: 10%
Noise Level: ≤48dB

IP Level: IP42 (static; non-action)
Min. Installation Dimension: 125mm+Stroke
Option:
 Hall-effect sensor
 Mechanical push only extension tube
 With direct-cut cable to work without control box



CF31



CF32



CF12H

Model No.	Max. Push Load (N)	Max. Pull Load (N)	Typical Speed (mm/s)		Typical Current (A)	
			No Load	Full Load	No Load	Full Load
MK33-24DA4...	6000	3000	4.2	2.9	0.8	3.4

BD21

Input: 24V DC
Max. Push Load: 2000N
Max. Pull Load: 2000N
Max. Speed at No Load: 52mm/s
Stroke: 50~333mm
Duty Cycle: 10%
Noise Level: ≤55dB

Retracted Length: ≥130mm
With direct-cut cable to work without control box
Option:
 Hall-effect sensor
 Cable outlet from front or rear end
 2 types of plastic nuts are available



Model No.	Max. Push/Pull Load (N)	Typical Speed (mm/s)		Typical Current (A)	
		No Load	Full Load	No Load	Full Load
BD21-X0-24-HC...	1500	52	42	0.5	2.5
BD21-X0-24-K3...	2000	8.3	4.7	0.3	2.5

BD23

Input: 24V DC
Max. Push Load: 1500N
Max. Pull Load: 1500N
Max. Speed at No Load: 40mm/s
Stroke: 40~233mm
Duty Cycle: 10%
Noise Level: ≤53dB

Retracted Length: ≥133mm
With direct-cut cable to work without control box
Option:
 Cable outlet from front or rear end
 3 types of plastic slider blocks are available



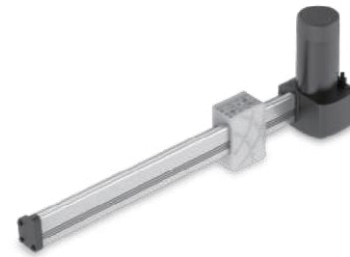
Model No.	Max. Push Load (N)	Max. Pull Load (N)	Typical Speed (mm/s)		Typical Current (A)	
			No Load	Full Load	No Load	Full Load
BD23-XX-24-N4...	1500	1000	25	23	0.6	2.3
BD23-XX-24-W6...	1500	1500	40	33	0.6	4.0



BD61

Input: 12 / 24V DC
Max. Push Load: 6000N
Max. Pull Load: 4000N
Max. Speed at No Load: 33.3mm/s
Stroke: 100~1000mm
Duty Cycle: 10%
Noise Level: ≤53dB

Retracted Length: ≥127mm
Option:
 Hall-effect sensor
 Mechanical brake
 Mounting bracket
 With direct-cut cable to work without control box



CF31



CF32



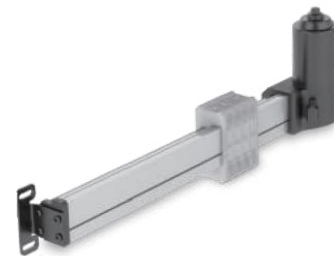
CF12H

Model No.	Max. Push Load (N)	Max. Pull Load (N)	Self-locking Ability (N)	Typical Speed (mm/s)		Typical Current (A)			
				No Load	Full Load	No Load		Full Load	
						12V	24V	12V	24V
BD61-XX-A4...	6000	4000	5000	4.2	2.9	0.8	0.6	5.4	2.7
BD61-XX-F4...	5000	4000	5000	5.5	4.4	0.8	0.6	5.6	2.8
BD61-XX-A6...	4000	4000	2500	6.2	3.8	0.4	0.6	6.0	3.0
BD61-XX-A8...	3000	3000	2000	8.3	5.0	0.6	0.6	5.4	2.7
BD61-XX-F8...	3000	3000	2000	11.0	8.2	1.0	0.6	5.8	2.9
BD61-XX-AG...	1500	1500	700	16.6	12.2	0.4	0.6	5.6	2.8
BD61-XX-KG...	750	750	0	33.3	23.5	0.4	0.6	5.2	2.7

BD62

Input: 24V DC
Max. Push Load: 3000N
Max. Pull Load: 3000N
Max. Speed at No Load: 6.3mm/s
Stroke: 100~1000mm
Duty Cycle: 10%
Noise Level: ≤55dB

Retracted Length: ≥142mm
Option:
 Hall-effect sensor
 Mechanical brake
 With direct-cut cable to work without control box



CF31



CF32



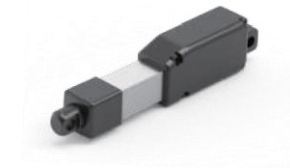
CF12H

Model No.	Max. Push Load (N)	Max. Pull Load (N)	Self-locking Ability (N)	Typical Speed (mm/s)		Typical Current (A)	
				No Load	Full Load	No Load	Full Load
BD62-XX-A6...	3000	3000	3000	6.3	4.0	0.8	2.9

MKS1

Input: 12V DC
Max. Push Load: 80N
Max. Pull Load: 80N
Max. Static Load: 40N
Max. Speed at No Load: 19mm/s
Stroke: 10 / 30 / 50 / 100mm
Duty Cycle: 20%
Noise Level: ≤55dB

IP Level: IP66 / IP69K (static; non-action)
Min. Installation Dimension: 67mm+Stroke
Option:
 MKS1-L version: with limit switches
 MKS1-P version: with potentiometer (POT)



Model No.	Max. Push/Pull Load (N)	Self-locking Ability (N)	Typical Speed (mm/s)		Typical Current (A)	
			No Load	Full Load	No Load	Full Load
MKS1-X-12-E...	42	21	19.0	12.2	0.14	0.27
MKS1-X-12-F...	80	40	9.5	6.3	0.12	0.22

LD60

Input: 24V DC
Max. Push Load: 6000N
Max. Pull Load: 6000N
Max. Speed at No Load: 8.4mm/s
Stroke: 100~400mm
Duty Cycle: 10%
Noise Level: ≤52dB

IP Level: IPX2 (static; non-action)
Min. Installation Dimension:
 190mm+Stroke
 190mm (without inner & outer tubes)
Aluminum alloy outer tube and gearbox
Options:
 Standard / fast version
 Without extension tube and outer tube
 Anodized black outer tube and gearbox



Aluminum alloy



Anodized black



Without inner & outer tubes

Model No.	Max. Push/Pull Load (N)	Typical Speed (mm/s)		Typical Current (A)	
		No Load	Full Load	No Load	Full Load
LD60-24K4...	6000	5.5	3.9	0.4	5.1
LD60-24K6...	6000	8.4	4.9	0.6	7.0



MD21

Input: 24V DC
Max. Push Load: 2000N
Max. Pull Load: 2000N
Max. Speed at No Load: 23.6mm/s
Stroke: 50~400mm
Duty Cycle: 10%
Noise Level: ≤50dB

IP Level: IPX5 (Static; non-action)
Min. Installation Dimension: 135mm+Stroke
Option:
 Hall-effect sensor
Compatible Products:
 MB22 mounting bracket



Model No.	Max. Push / Pull Load (N)	Typical Speed (mm/s)		Typical Current (A)	
		No Load	Full Load	No Load	Full Load
MD21-24N4...	2000	7.5	5.3	1.1	3.0
MD21-24N6...	1500	11.0	7.6	1.1	3.2
MD21-24NC...	1000	23.6	15.7	1.1	3.2

MK32

Input: 24V DC
Max. Push Load: 3500N
Max. Pull Load: 3500N
Max. Speed at No Load: 26.0mm/s
Stroke: 50~600mm
Duty Cycle: 10%
Noise Level: ≤52dB

IP Level: IPX4, IP66 (Static; non-action)
Min. Installation Dimension: 112mm+Stroke
Option:
 Hall-effect sensor
 Mechanical push only extension tube
 Safety nut (in push direction)



Model No.	Max. Push / Pull Load (N)	Typical Speed (mm/s)		Typical Current (A)	
		No Load	Full Load	No Load	Full Load
MK32-24N3...	3500	6.5	5.0	2.5	5.0
MK32-24N4...	3000	8.5	6.0	2.5	5.2
MK32-24N6...	2500	13.0	9.0	2.5	6.0
MK32-24N8...	2000	17.0	11.5	2.7	5.5
MK32-24NC...	1500	26.0	14.0	2.5	6.0
MK32-24P4...	3000	6.0	3.0	2.5	5.0
MK32-24P6...	2500	10.5	5.5	2.5	4.5
MK32-24P8...	2000	14.0	7.5	2.7	4.5

LD3

Input: 12 / 24V DC
Max. Push Load: 1000N
Max. Pull Load: 1000N
Max. Static Load: 2500N
Max. Speed at No Load: 43.9mm/s
Stroke:
 50 / 100 / 150 / 200 / 250 / 300mm
Duty Cycle: 25%
Noise Level: ≤55dB (quiet version)

IP Level: IP54 (static; non-action)
Min. Installation Dimension: 108mm+Stroke
Option:
 Quiet version
 Hall-effect sensor
 Potentiometer (POT)
 IP level: IP65 (static; non-action)



Model No.	Max. Push / Pull Load (N)	Self-locking Ability (N)	Typical Speed (mm/s)		Typical Current (A)			
			No Load	Full Load	No Load		Full Load	
					12V	24V	12V	24V
LD3-XX-05-K3...	150	2500	43.9	36.5	0.6	1.2	1.6	3.2
LD3-XX-10-K3...	250	2500	27.6	23.5	0.6	1.2	1.6	3.2
LD3-XX-20-K3...	500	2500	14.6	12.3	0.6	1.2	1.6	3.2
LD3-XX-30-K3...	800	2500	9.5	7.5	0.6	1.2	1.6	3.2
LD3-XX-40-K3...	1000	2500	7.0	5.5	0.6	1.2	1.6	3.2
LD3Q-XX-20-D3...	500	2500	5.8	3.9	0.1	0.2	0.5	1.0
LD3Q-XX-30-D3...	800	2500	3.8	2.6	0.1	0.2	0.6	1.2

MD10

Input: 24V DC
Max. Push Load: 1000N
Max. Pull Load: 1000N
Max. Speed at No Load: 36.0mm/s
Stroke: 50~300mm
Duty Cycle: 10%
Noise Level: ≤52dB

IP Level: IPX5 (Static; non-action)
Min. Installation Dimension: 115mm+Stroke
Option:
 Hall-effect sensor
 Mechanical push only extension tube



Model No.	Max. Push / Pull Load (N)	Typical Speed (mm/s)		Typical Current (A)	
		No Load	Full Load	No Load	Full Load
MD10-24F4...	1000	5.1	2.8	0.8	1.1
MD10-24R4...	1000	7.2	4.5	1.0	1.8
MD10-24F8...	750	10.1	4.3	0.8	1.4
MD10-24R8...	750	14.2	8.4	1.0	2.1
MD10-24FC...	500	15.1	7.4	0.8	1.3
MD10-24L8...	500	18.6	14.8	1.2	2.0
MD10-24RC...	500	21.6	13.9	1.0	1.8
MD10-24LC...	400	27.5	20.0	1.2	2.1
MD10-24LG...	250	36.0	29.3	1.2	1.9



T-control

Input: 100 / 120 / 230 / 100~240V AC
Output: 24V DC (EI transformer) or 29V DC (SMPS)
Output Rated Current: 3A in total
Number of Actuator(s): 1~3
Number of Control(s): 1
Duty Cycle: 10%
Color: black or light grey RAL 7001
Electric Shock Protection Level: Class II
 Emergency lowering function with backup batteries
 Can be mounted on FD60



FD60+T-control



H2Z

CB3T

Input: 120 / 230 / 100~240V AC
Output: 24V DC (EI transformer) or 29V DC (SMPS)
Output Rated Current:
 3A per channel for CB3T
 5A in total for CB3T-SY
Number of Actuator(s): 1~3
Number of Control(s): 1
Duty Cycle: 10%
Electric Shock Protection Level: Class II
Option:
 Synchronization of 2 actuators (CB3T-SY)



H2Z

CBT2

Input: 100 / 120 / 230 / 100~240V AC
Output: 24V DC (EI transformer) or 29V DC (SMPS)
Output Rated Current: 3A (per channel)
Number of Actuator: 1~3
Number of Control: 1
Duty Cycle: 10%
Color: black or light grey RAL 7001
Electric Shock Protection Level: Class I, Class II
 Emergency lowering function with backup batteries
 Detachable AC power cord
 Can be mounted on FD60



H2Z

CB4M

Input: 110 / 230V AC
Output: 24V DC (EI transformer)
Output Rated Current: 3A (per channel)
Number of Actuator: 2~4
Number of Control: 1~2
Duty Cycle: 10%
Electric Shock Protection Level: Class I or Class II
 With charger function
Option:
 Rechargeable batteries 12V DC 1.3Ah*2
 Synchronization for 2~4 actuators
 Detachable AC power cord



H2N



HS23



CS1

Input: 29V DC
Output: 29V DC
Output Rated Current: 3A (per channel)
Number of Actuator(s): 1~2
Number of Control(s): 1
Duty Cycle: 10%
IP level: IP42
Color: black or light gray RAL 7001
 Can be mounted on FD60



FD60+CS1

CS2-BT

Input: 29V DC
Output: 29V DC
Output Rated Current: 4.5A (per channel)
Number of Actuator(s): 2 (support joint movement)
Number of Control(s): 1
Duty Cycle: 10%
IP level: IP42
 Sync function
 Memory function
 Connections for under bed light and USB charger
 Can be mounted on FD60
Option:
 Customized APP available



TX32

CS2

Input: 29V DC
Output: 29V DC
Output Rated Current: 3A (per channel)
Number of Actuator(s): 2~4
Number of Control(s): 1
Duty Cycle: 10%
IP level: IP42
 Joint movement function
 With anti-pull clip
 Can be mounted on FD60



FD60+CS2

CF32

Input: 29V DC
Output: 29V DC
Output Rated Current: 3.5A (per channel)
Number of Actuator(s): 2 (support joint movement)
Duty Cycle: 10%
IP level: IP42
 Sync function
 Memory function
 Connections for under bed light and USB charger
Option:
 Customized APP available



TX32



CF31

Input: 29V DC
Output: 29V DC
Output Rated Current: 3.5A (per channel)
Number of Actuator(s): 2 (support joint-movement)
Duty Cycle: 10%
IP level: IP42
 Sync function
 Memory function
 Connections for under bed light and USB charger
 Connections for massage motors
Option:
 Customized APP available



TX31

TX2A

Input and Output Voltage: 29V DC (power supply is not included)
Number of Actuator(s): 1
Frequency: 2.4GHz
Operating Distance: 5m
Duty Cycle: 10%
 Spared flat function button
 Remote control pairing button
 LED operation indicator



TXZ

CF11H

Input: 100~240V AC
Output: 29V DC
Output Rated Current: 3.6A (per channel)
Number of Actuator(s): 1~2
Number of Control(s): 1
Duty Cycle: 10%
Electric Shock Protection Level: Class II
 Detachable AC power cord



H2N

CF12H

Input: 100~240V AC
Output: 29V DC
Output Rated Current: 3.6A (per channel)
Number of Actuator(s): 2~4
Number of Control(s): 1
Duty Cycle: 10%
Electric Shock Protection Level: Class II
 Detachable AC power cord



H2N



H2Z



CF11

Input: 100~240V AC
Output: 32V DC
Output Rated Current: 6A in total
Number of Actuator(s): 2 (synchronization)
Number of Control(s): 1
Duty Cycle: 10%
Electric Shock Protection Level: Class II
 Anti-pinch protection (CF11D only)
 Height display (compatible with DKP3, DP07, DP08)
 Support USB charging
 Soft start / stop
 Memory function
 Detachable AC Power cord
Options:
 CF11D for adjustable desks
 CF11S for general applications



DP05



DP11



DP08

CF12S

Input: 100~240V AC
Output: 32V DC
Output Rated Current: 3.6A (per channel)
Number of Actuator(s): 4 (synchronization)
Number of Control(s): 1
Duty Cycle: 10%
Electric Shock Protection Level: Class II
 Soft start / stop
 Memory function
 Detachable AC power cord



DP05



DP11



DP08

CF13

Input: 100~240V AC
Output: 29V DC
Output Rated Current: 2A
Number of Actuator(s): 1
Number of Control(s): 1
Duty Cycle: 10%
Electric Shock Protection Level: Class II
 Anti-pinch protection
 Height display (compatible with DKP3, DP07, DP08)
 Support USB charging
 Soft start / stop
 Memory function
 Detachable AC Power cord



DP05



DP11



DP08



HD

Motor Number to Control: 1, 2, 3, 4
Available Number of Buttons: 2, 4, 6, 8, 10
 LED power on indicator
 With hook
Option:
 Joint movement for 2 motors



HJ

Motor Number to Control: 1, 2, 3
Available Number of Buttons: 2, 4, 6
 LED power on indicator
 With hook
Option:
 Joint movement for 2 motors
 Magnetic back cover



DKP4

Available Number of Buttons: 2



DP05

Available Number of Touch Buttons: 2
 Touch control button
 Sliding mounting bracket
Option:
 Color (black or white)



HM

Motor Number to Control: 1, 2, 3
Available Number of Buttons: 2, 4, 6, 8
 LED power on indicator
 With hook
Option:
 Joint or synchronous movement for 2 motors
 Memory function
 Safety key
 Color (black or light grey RAL 7035)



H2N

Motor Number to Control: 1, 2, 3
Available Number of Buttons: 2, 4, 6, 7, 9
 LED torch (white)
 With hook
Option:
 Joint movement for 2 motors
 Holder with or without hook



DP11

Available Number of Buttons: 2
 LED power on indicator



DKP3

Available Number of Buttons: 7
Number of Memory Positions: 4
 3-digit LED display for height read-out and error code



H3N

Motor Number to Control: 1, 2,
Available Number of Buttons: 3, 5, 6, 7, 8, 10
 LED power on indicator
 LED torch (blue)
 Button backlight (green)
 With holder
Option:
 Joint movement for 2 motors
 Memory function
 Holder with or without hook
 Color (textured black or matte black)



H4N

Motor Number to Control: 2
Available Number of Buttons: 5, 7, 8, 10
 LED torch (blue)
 With holder
Option:
 Joint movement for 2 motors
 Button backlight (blue)
 Memory function
 Holder with or without hook



DP07

Available Number of Touch Buttons: 6
Number of Memory Positions: 3
 3-digit LED display for height read-out and error code
 Sliding mounting bracket
Option:
 USB charging port for 3C devices



DP08

Available Number of Buttons: 6
Number of Memory Positions: 3
 3-digit LED display for height read-out and error code
Option:
 USB charging port for 3C devices





HR

Motor Number to Control: 1 pc or 1 pair
Available Number of Buttons: 2



HDU

Motor Number to Control: 1, 2
Available Number of Buttons: 2, 4



HZ01

Motor Number to Control: 2
Available Number of Buttons: 4
Option:
USB charging port (5V DC / 1A)
Button texture (matte or glossy)



HZ02

Motor Number to Control: 1
Available Number of Buttons: 2



H2Z

Motor Number to Control: 1, 2
Available Number of Buttons: 2, 4, 6
LED operation indicator
With hook
Option:
Joint movement for 2 motors



HS23

Motor Number to Control: 1, 2, 3, 4
Available Number of Button: 13 Max.
With hook
Option:
Magnetic back cover



HZ03

Motor Number to Control: 1
Available Number of Buttons: 2



HZ04

Motor Number to Control: 1
Available Number of Buttons: 2
Option:
USB charging port (5V DC / 1A)



HZ05

Motor Number to Control: 1
Available Number of Buttons: 2
Option:
USB charging port (5V DC / 1A)



HZ06

Motor Number to Control: 1
Available Number of Buttons: 2
Option:
USB charging port (5V DC / 1A)





HB

Motor Number to Control: 1
Available Number of Buttons: 2
With hook



H2B

Motor Number to Control: 1, 2
Available Number of Buttons: 2, 4
LED power on indicator
With hook



TX11

Motor Number to Control: 2
Available Number of Buttons: 5
Battery: AAA*3



TXZ

Motor Number to Control: 1, 2
Available Number of Buttons: 2, 4, 6
Battery: AAA*2
LED indicator
With hook
Safety key on the back
Option:
Joint movement for 2 motors



HS02

Motor Number to Control: 1
Available Number of Buttons: 2



HS15

Motor Number to Control: 2, 3
Available Number of Buttons: 6, 8
LED power on indicator
With hook
Safety key
Option:
Joint movement for 2 motors
Color (black or light grey RAL 7035)
Detachable cable set



TXE

Motor Number to Control : 2
Available Number of Buttons: 7
Battery: Alkaline AAA x 2
IP Level: IP20
LED indicator



TXC

Motor Number to Control: 2, 3
Available Number of Buttons: 5, 7, 9
Battery: AAA*3
LED torch (white)
Button backlight (blue)
Option:
Joint movement for 2 motors
With hook



TPSL

Motor Number to Control: 1
Available Number of Touch Buttons: 2



TX32

Motor Number to Control: 1, 2
Available Number of Buttons: 13
Battery: AAA*3
LED torch (white)
Button backlight (blue)
Memory function
Option:
Joint movement for 2 motors



TX31

Motor Number to Control: 1, 2
Available Number of Buttons: 17
Battery: AAA*3
LED torch (white)
Button backlight (blue)
Memory function
Option:
Joint movement for 2 motors





TXA

RF Receiver

Frequency: 2.4GHz
 Input: 10~24V DC (TXA4) / 5V DC (TXA5)
 Operating Distance: 5m
 Motor Number to Control: 3
 Work with control box or double motor
 Flat function
 LED indicator
Option:
 Memory function



FL3

Floor Light

Input: 24V DC
 LED neutral white



DPA-58-2920-C8

Switching Mode Power Supply (SMPS)

Input: 100~240V AC
 Standby Power Consumption: < 0.5W
 Output: 29V DC, 2A
 Electric Shock Protection Level: Class II



DPB-58-2920-C8

Switching Mode Power Supply (SMPS)

Input: 100~240V AC
 Standby Power Consumption: < 0.5W
 Output: 29V DC, 2A
 Color: black or light grey (RAL 7035)
 Electric Shock Protection Level: Class II
 Emergency lowering function



USB Charger

Input: 29V DC
 Output: QC 3.0 / PD 18W Max.
 Cable Length: 2200mm



VM04

Massage Motor

Input: 24V DC
 Dimensions: 98 x 55mm



DPA-87-2930-C8

Switching Mode Power Supply (SMPS)

Input: 100~240V AC
 Standby Power Consumption: < 0.15W
 Output: 29V DC, 3A
 Electric Shock Protection Level: Class II



DPA-72-2430-C6

Switching Mode Power Supply (SMPS)

Input: 100~240V AC
 Standby Power Consumption: < 0.21W
 Output: 24V DC, 3A
 Electric Shock Protection Level: Class I



ZB-B1800

Battery Pack

Input: 24~32V DC
 Standby Power Consumption: < 0.5W
 Output: 21~29V DC, 3.0A
 Capacity: 1800mAh
 Over-current Protection: 5A





DLC1

Input: 24V DC
Max. Thrust: 2000N
Typical Speed at No Load: 10.9mm/s
Bending Moment: 500Nm (static) / 250Nm (dynamic)
Stroke: 50~400mm
Duty Cycle: 10%
Noise Level: ≤ 50 dB
IP Level: IPX4
Preset limit switches
Option:
 Hall-effect sensor
 IP Level: IPX6



Model No.	Max. Push Load (N)	Typical Speed (mm/s)		Typical Current (A)	
		No Load	Full Load	No Load	Full Load
DLC1-24RH-350.750...	2000	10.9	9.8	1.7	4.1

DLC2

Input: 24V DC
Max. Thrust: 2000N
Typical Speed at No Load: 18mm/s
Bending Moment: 1000Nm (static) / 750Nm (dynamic)
Stroke: 140 / 261 / 450mm
Duty Cycle: 10%
Noise Level: ≤ 53 dB
Preset limit switches
Option:
 Hall-effect sensor



Model No.	Max. Push / Pull Load (N)	Typical Speed (mm/s)		Typical Current (A)	
		No Load	Full Load	No Load	Full Load
DCL2-24H6...	2000	18	13	1.1	4.5

TW61

Input: 100~240V AC
Output: 29V DC (SMPS)
Max. Load: 2*6000N
Typical Speed at No Load: 5mm/s
Max. Number of Additional Actuators: 2 channels (24V DC)
Max. Number of Control: 1 channel
Stroke: 29~87mm
Duty Cycle: 10%
Noise Level: ≤ 55 dB
IP Level: IP43
Color: black or light grey (RAL 7035)
Electric Shock Protection Level: Class II
 Emergency lowering function
Option:
 Hall-effect sensors
 IP Level: IP54



TW61-RMS

Input: 100~240V AC
Output: 29V DC (SMPS)
Max. Load: 2*6000N
Typical Speed at No Load: 5mm/s
Stroke: 29~87mm
Duty Cycle: 10%
Noise Level: ≤ 55 dB
IP Level: IP43
Color: black
Electric Shock Protection Level: Class II
 Synchronization function
 Built-in RF receiver
 Memory function
 Massage function
 Emergency lowering function



Gear Motor



DKM1

Input: 24V DC
Typical Speed: 66rpm
Max. Torque: 5Nm
Duty Cycle: 10%
Noise Level: ≤ 50 dB
IP Level: IP30
Hollow Shaft: hexogen 8mm diameter
With dual Hall-effect sensors



DKM3

Input: 24V DC
Typical Speed: 62rpm after gear reduction
Max. Torque: 5Nm
Duty Cycle: 10%
Noise Level: ≤ 50 dB
IP Level: IP30
Hollow Shaft: hexogen 6 or 8mm diameter
With dual Hall-effect sensors
Compatible with CF11D and CF13



DKM4-LF

Input: 24V DC
Max. Speed at No Load: 110rpm after gear reduction
Max. Torque: 7Nm
Duty Cycle: 10%
Noise Level: ≤ 53 dB
IP Level: IP30
Hollow Shaft: hexogen 6mm diameter
With dual Hall-effect sensors
Compatible with CF11D and CF13
Option:
Standard motor or high speed motor



Desk Leg


DKL3

Input: 24 ~ 32V DC
Max. Load: 600N
Typical Speed: 41mm/s
Stroke: 650mm
Retracted Length: 553mm
Duty Cycle: 10%
Noise Level: ≤ 50 dB
With dual Hall-effect sensors



SEIMITSU Factory Automation Pvt. Ltd.

Seimitsu Tower, A - 51, H Block, MIDC Industrial Area,
Pimpri - Chinchwad, Pune - 411018, Maharashtra.

 +91 9028121211 / 020 - 46212700

 www.seimitsu.in |  sales@seimitsu.in