

RSD SERIES

Rotary Servo Drive | Product Overview



Flange output



Shaft output



Internal shrink disk output



Shrink disk output

Smarter Indexing

The **CAMCO RSD Rotary Servo Drive** is a zero-backlash, cam-actuated drive compatible with industry-standard servo motors for precise control, efficiency and flexibility.

Universal mounting

Maintenance-free operation

Large output bearing for greater overturning moment capacity

Large thru-hole for accessory lines (electric, pneumatic, etc.)

IP-65 rating

Class 100 rated with Med-Redi preparation

Features

Designed to accept a variety of servo motors

Preloaded system

- Zero backlash
- High accuracy
- Smooth motion
- Quiet operation
- High speed

Indexing flexibility

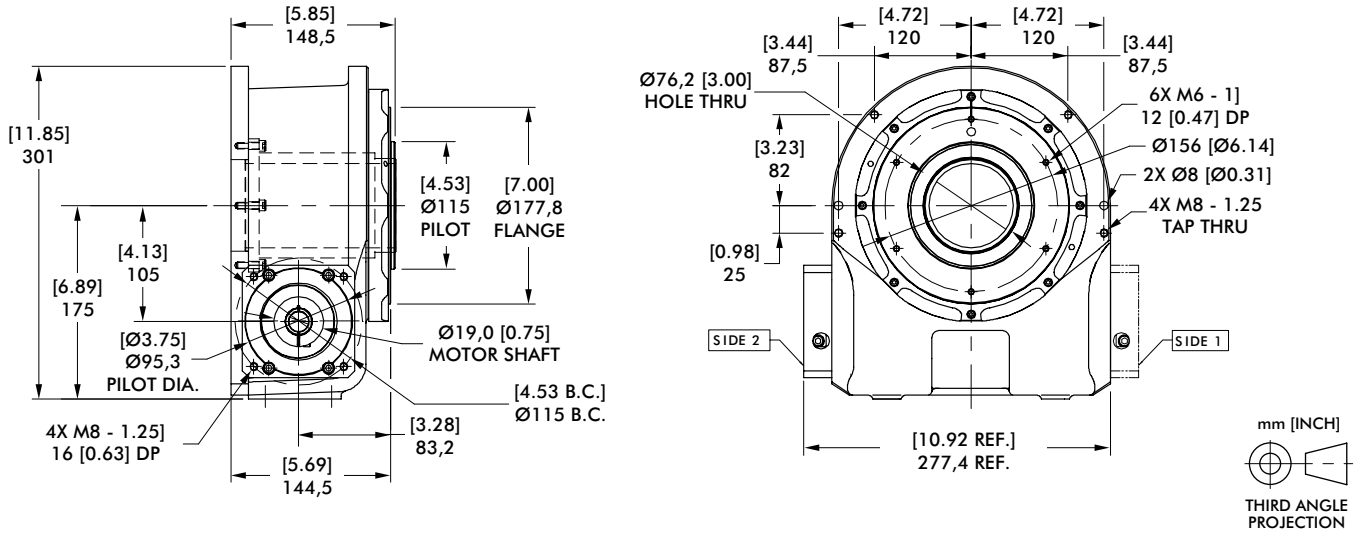
- Run different parts on the same indexer
- Variable indexing: reversing, sorting, vary distance with each index

4:1 to 18:1 ratios in a single stage

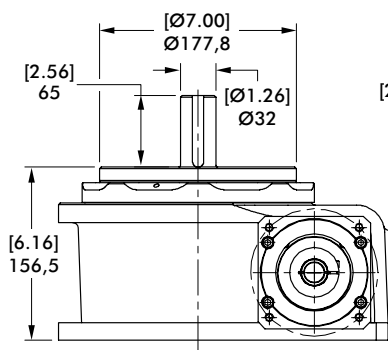
115RSD SERIES

Rotary Servo Drive | Dimensions

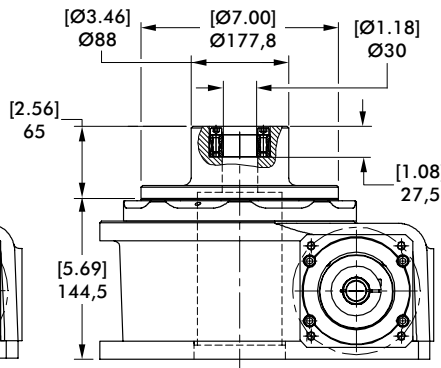
Flange Output



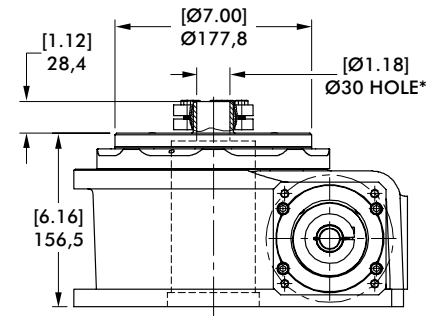
Shaft Output



Internal Shrink Disk Output



Shrink Disk Output



* Also available with 40 mm [1.57 in] bore.

Specifications	Units	Standard Ratios				Other Available Ratios					
Single Reduction Ratio	-	8:1	16:1	4:1	5:1	6:1	9:1	12:1	15:1	18:1	
Maximum Torque Capacity	[in-lb] N-m	[3540] 400	[3755] 424	[2950] 333	[3195] 361	[3355] 379	[3595] 406	[3695] 418	[3740] 423	[3770] 426	
Maximum Inertia on Output Dial	[lb-ft ²] kg-m ²	[1622] 68	[6488] 273	[406] 17	[634] 27	[912] 38	[2053] 87	[3649] 154	[5702] 240	[8211] 346	
Unit Output Inertia Reflected at Input Shaft	[lb-ft ²] kg-m ²	[0.44] 0,05	[0.33] 0,04	[0.94] 0,11	[0.73] 0,08	[0.55] 0,06	[0.40] 0,05	[0.43] 0,05	[0.34] 0,04	[0.31] 0,03	
Stiffness	in-lb/arcmin N-m/arcmin	[169] 19,1	[179] 20,2	[141] 15,9	[153] 17,3	[160] 18,1	[172] 19,4	[177] 20	[179] 20,2	[180] 20,3	
Input Torque of Unit Only	N-m [in-lb]						2,26 [20]				
Maximum Axial Load	kN [lbf]						10 [2270]				
Maximum Radial Load	kN [lbf]						4 [910]				
Maximum Offset Load (Overturning Moment)	N-m [in-lb]						359 [3180]				
Output Face Flatness	TIR mm [in]						0,05 [0.002]				
Axial Run-Out	mm [in]						0,04 [0.0015]				
Accuracy	arc seconds						±30				
Repeatability	arc seconds						±7				
Torsional Backlash	arc seconds						0				
Operating Temperature Range	C° [F°]						60 [140] Minimum				