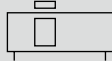


High precision guided rodless cylinder

# Double acting SRM3 Series

# Double acting/position locking SRM3-Q Series

● Bore size:  $\varnothing 25/\varnothing 32/\varnothing 40/\varnothing 63$  or equiv.



## Specifications

1 MPa  $\approx$  145.0 psi, 1 MPa = 10 bar

Item	SRM3				SRM3-Q			
	Standard/with switch				Position locking/with switch			
Bore size mm	$\varnothing 25$ or equiv.	$\varnothing 32$ or equiv.	$\varnothing 40$ or equiv.	$\varnothing 63$ or equiv.	$\varnothing 25$ or equiv.	$\varnothing 32$ or equiv.	$\varnothing 40$ or equiv.	$\varnothing 63$ or equiv.
Actuation	Double acting				Double acting/position locking			
Working fluid	Compressed air							
Max. working pressure MPa	0.7 ( $\approx$ 100 psi, 7 bar)							
Min. working pressure MPa	0.15 ( $\approx$ 22 psi, 1.5 bar)		0.1		0.15 ( $\approx$ 22 psi, 1.5 bar)		0.1	
Proof pressure MPa	1.05 ( $\approx$ 150 psi, 10.5 bar)							
Ambient temperature $^{\circ}\text{C}$	5 (41 $^{\circ}\text{F}$ ) to 60 (140 $^{\circ}\text{F}$ )							
Port size	Cylinder body port	Rc1/8	Rc1/4	Rc3/8	Rc1/8	Rc1/4	Rc3/8	
	Position locking port	-			Rc1/8			
Stroke tolerance mm	$^{+2.0}_0$ (to 1000)				$^{+2.5}_0$ (to 2000)			
Working piston speed mm/s	50 to 1500 (*1, *2)							
Cushion	Air cushion							
Lubrication	Not required							
Repeat stopping accuracy mm	$\pm 0.03$							
Position locking mechanism	-				Attached to R side of cover			
Holding force N	-				Max. thrust x 0.7			

\*1: For common port piping, working piston speed varies depending on stroke length. Contact CKD.

\*2: (1) When the piston moves at 500 to 1500 mm/s, reduce the speed when entering the position locking mechanism to 500 mm/s or less

(2) To reduce the speed, add an external shock absorber or deceleration circuit.

(3) Apply grease regularly to the sliding part of the lock lever.

## Allowable absorbed energy

Bore size (mm)	Cushioned		Without cushion	With shock absorber (initial set point)	
	Allowable absorbed energy (J)	Cushion stroke (mm)	Allowable absorbed energy (J)	Absorbed energy (J)	Effective stroke length (mm)
$\varnothing 25$ or equiv.	1.40	20.9	0.015	10	9
$\varnothing 32$ or equiv.	2.57	23.5	0.030	18	13
$\varnothing 40$ or equiv.	4.27	23.9	0.050	50	16.5
$\varnothing 63$ or equiv.	17.4	29.6	0.138	86	21

## Stroke length

Bore size (mm)	Standard stroke length (mm)	Max. stroke length (mm)	Min. stroke length (mm)
$\varnothing 25, \varnothing 32$ or equiv.	200, 300, 400, 500, 600, 700, 800, 900, 1000	1000	50
$\varnothing 40, \varnothing 63$ or equiv.	200, 300, 400, 500, 600, 700, 800, 900, 1000, 1100, 1200, 1300, 1400, 1500, 1600, 1700, 1800, 1900, 2000	2000	80

Note: The custom stroke length is available in 1 mm increments.

## Number of installed switches and min. stroke length (mm)

Switch quantity	1		2		3		4		5		6		7		8		9	
Switch model No.	T*V	T*H	T*V	T*H	T*V	T*H	T*V	T*H	T*V	T*H	T*V	T*H	T*V	T*H	T*V	T*H	T*V	T*H
Bore size (mm)																		
$\varnothing 25$ or equiv.	50	50	50	50	90	100	135	150	180	200	225	250	270	300	315	350	360	400
$\varnothing 32$ or equiv.	50	50	50	50	90	100	135	150	180	200	225	250	270	300	315	350	360	400
$\varnothing 40$ or equiv.	80	80	80	80	90	100	135	150	180	200	225	250	270	300	315	350	360	400
$\varnothing 63$ or equiv.	80	80	80	80	90	100	135	150	180	200	225	250	270	300	315	350	360	400

### Switch specifications

● 1-color/2-color display/for AC magnetic field proof

Item	Proximity 2-wire		Proximity 3-wire		Reed 2-wire						Proximity 2-wire	
	T2YH/ T2YV	T2WH/ T2WV	T3YH/ T3YV	T3WH/ T3WV	TOH/TOV		T5H/T5V		T8H/T8V		T2YD/ T2YDT (*4)	
Applications	Dedicated for programmable controller		For programmable controller, relay		For programmable controller, relay		For programmable controller, relay (no lamp), serial		For programmable controller, relay		Dedicated for programmable controller	
Output method	-		NPN output		-							
Power supply voltage	-		10 to 28 VDC		-							
Load voltage	10 to 30 VDC	24 VDC ±10%	30 VDC or less		12/24 VDC	110 VAC	5/12/24 VDC	110 VAC	12/24 VDC	110 VAC	220 VAC	24 VDC ±10%
Load current	5 to 20 mA (*2)		50 mA or less		5 to 50 mA	7 to 20 mA	50 mA or less	20 mA or less	5 to 50 mA	7 to 20 mA	7 to 10 mA	5 to 20 mA
Indicator lamp	Red/green LED (Lit when ON)		Red/green LED (Lit when ON)		LED (Lit when ON)		Without indicator lamp		LED (Lit when ON)		Red/green LED (Lit when ON)	
Leakage current	1 mA or less		10 µA or less		0 mA						1 mA or less	
Weight	1 m: 33	1 m: 18	1 m: 33	1 m: 18	1 m: 18			3 m: 49			5 m: 80	
	3 m: 87	3 m: 49	3 m: 87	3 m: 49	1 m: 18			3 m: 49			5 m: 80	
	5 m: 142	5 m: 80	5 m: 142	5 m: 80	1 m: 18			3 m: 49			5 m: 80	

\*1 : After shipment, modification from reed switch to proximity switch or vice versa is not possible.

If the cylinder switch is not specified (i.e., blank), a reed switch will be attached to the cylinder body.

\*2: Refer to Ending Page 1 for detailed switch specifications and dimensions.

\*3: Switches other than the above models, such as switches with connectors, are also available. Refer to Ending Page 1.

\*4 : The max. load current is 20 mA at 25°C. The current is lower than 20 mA if the operating ambient temperature around the switch is higher than 25°C. (5 to 10 mA at 60°C)

\*5 : Switch for AC magnetic field (T2YD/T2YDT) cannot be used in DC magnetic field.

### Cylinder weight

Unit: kg

Bore size (mm)	Weight for 0 mm stroke length			Additional weight per St = 100mm
	Basic (SRM3)	Position locking (SRM3-Q)	Switch weight	
ø25 or equiv.	2.4	2.9	Refer to the weight in the switch specifications.	0.59
ø32 or equiv.	3.3	4.2		0.72
ø40 or equiv.	4.8	6.0		1.20
ø63 or equiv.	15.1	17.8		1.99

### Theoretical thrust table

(Unit: N)

Bore size (mm)	Operating direction	Working pressure MPa							
		0.1	0.15	0.2	0.3	0.4	0.5	0.6	0.7
ø25	Push/Pull	-	81.4	$1.08 \times 10^2$	$1.63 \times 10^2$	$2.17 \times 10^2$	$2.71 \times 10^2$	$3.25 \times 10^2$	$3.80 \times 10^2$
ø32	Push/Pull	-	$1.21 \times 10^2$	$1.63 \times 10^2$	$2.44 \times 10^2$	$3.26 \times 10^2$	$4.07 \times 10^2$	$4.88 \times 10^2$	$5.70 \times 10^2$
ø40	Push/Pull	-	$1.90 \times 10^2$	$2.53 \times 10^2$	$3.80 \times 10^2$	$5.06 \times 10^2$	$6.33 \times 10^2$	$7.60 \times 10^2$	$8.86 \times 10^2$
ø63	Push/Pull	$3.14 \times 10^2$	$4.70 \times 10^2$	$6.27 \times 10^2$	$9.41 \times 10^2$	$1.25 \times 10^3$	$1.57 \times 10^3$	$1.88 \times 10^3$	$2.20 \times 10^3$

SCP\*3  
CMK2  
CMA2  
SCM  
SCG  
SCA2  
SCS2  
CKV2  
CAV2/  
COVP/N2  
SSD2  
SSG  
SSD  
CAT  
MDC2  
MVC  
SMG  
MSD/  
MSDG  
FC\*  
STK  
SRL3  
SRG3  
SRM3  
SRT3  
MRL2  
MRG2  
SM-25  
ShkAbs  
FJ  
FK  
Spd  
Contr  
Ending

# SRM3 Series

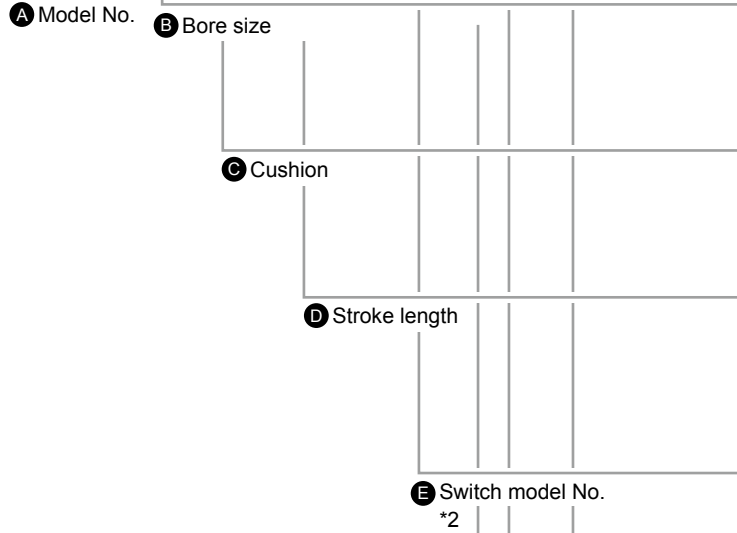
## How to order

Without switch (built-in magnet for switch)

**SRM3** - **25** - **B** - **500** - **C0** - **A**

With switch (built-in magnet for switch)

**SRM3** - **25** - **B** - **500** - **T0H** - **R** - **A**



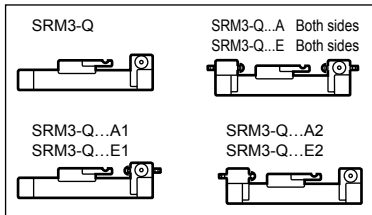
### ⚠ Precautions for model No. selection

\*1: Refer to page 1676 for the min. stroke length with switch.

\*2: Switches other than **E** Switch model No. are also available. (Made to order) Refer to Ending Page 1 for details.

\*3: To install the full stroke length adjusting bracket later, you need to remove the cover and attach a flat nut. A flat nut is attached to option "A3" to enable retrofitting the full stroke length adjusting bracket.

\*4: The full stroke length adjusting bracket on R side is provided as standard for the position locking. Therefore, if "A1" or "E1" is selected, a shock absorber only is added to R side. In the case of "A", R side is position locking and full stroke length adjustable with shock absorber, and L side is full stroke length adjustable with shock absorber. (Figure below)



\*5: Copper and PTFE free as standard. (except for type with shock absorber)

\*6: The built-in magnet cannot be changed after shipment.

\*7: Square nuts (two types, eight pieces each) are supplied for use of the T groove.

### [Example of model No.]

**SRM3-25B-500-T0H-R-A**

Model: High precision guided rodless cylinder

- A** Model No. : Standard
- B** Bore size :  $\varnothing 25$  mm
- C** Cushion : Both sides cushioned
- D** Stroke length : 500 mm
- E** Switch model No. : Reed T0H switch
- F** Switch quantity : 1 on R side
- G** Option : Both-side full stroke length adjustable, with shock absorber

Code	Description
<b>A Model No.</b>	
SRM3	Standard
SRM3-Q	Position locking

<b>B Bore size (mm)</b>	
25	$\varnothing 25$
32	$\varnothing 32$
40	$\varnothing 40$
63	$\varnothing 63$

<b>C Cushion</b>	
<b>B</b>	Both sides cushioned
<b>R</b>	R side cushioned
<b>L</b>	L side cushioned
<b>N</b>	Without cushion

<b>D Stroke length (mm)</b>		
Bore size	Stroke length (*1)	Custom stroke length
$\varnothing 25$	50 to 1000	In 1 mm increments
$\varnothing 32$	50 to 1000	
$\varnothing 40$	80 to 2000	
$\varnothing 63$	80 to 2000	

<b>E Switch model No.</b>						
Axial lead wire	Radial lead wire	Reed Contact	Voltage		Indicator lamp	Lead wire
			AC	DC		
T0H*	T0V*	Reed	●	●	1-color display	2-wire
T5H*	T5V*		●	●	Without indicator lamp	
T8H*	T8V*		●	●	1-color display	
T2WH*	T2WV*	Proximity		●	2-color display	2-wire
T2YH*	T2YV*			●		
T3WH*	T3WV*			●	2-color display for AC magnetic field	2-wire
T3YH*	T3YV*			●		
T2YD*	-			●		
T2YDT*	-		●			

<b>* Lead wire length</b>	
Blank	1 m (standard)
3	3 m (option)
5	5 m (option)

<b>* Select only when the switch model No. is not specified *6</b>	
<b>C0</b>	With integrated magnet for reed switch
<b>C1</b>	With integrated magnet for proximity switch

<b>F Switch quantity</b>	
<b>R</b>	1 on R side
<b>L</b>	1 on L side
<b>D</b>	2
<b>T</b>	3
<b>4</b>	4 (when there are more than 4 switches, indicate switch quantity.)

<b>G Option</b>		Bore size ( $\varnothing$ )				
		25	32	40	63	
<b>A</b>	Full stroke length adjustable	With shock absorber on both sides	●	●	●	●
		With shock absorber on R side	●	●	●	●
		With shock absorber on L side	●	●	●	●
		Adjusting bracket to be added later	●	●	●	●
		With light-load shock absorber - both sides	●	●	●	●
		With light-load shock absorber - R side	●	●	●	●
<b>E1</b>	Full stroke length adjustable	With light-load shock absorber on L side	●	●	●	●
		With light-load shock absorber on L side	●	●	●	●
<b>Blank</b>	F (Standard)	●	●	●	●	
<b>R</b>	Port position	R (Common port)	●	●	●	●
		F	●	●	●	●
<b>B</b>	Port position	R (Common port)	●	●	●	●
		F	●	●	●	●
<b>T</b>	Port position	R (Common port)	●	●	●	●
		F	●	●	●	●
<b>D</b>	Port position	R (Common port)	●	●	●	●
		F	●	●	●	●
<b>S</b>	Port position	R (Common port)	●	●	●	●
		F	●	●	●	●

### How to order switch

- Switch body only

**SW** - **T0H**

Switch model No.  
(Item **E**) on page 1678)

### How to order discrete shock absorber

Model	Discrete shock absorber model No.	
	Standard (-A)	Light-load (-E)
SRM3-25	NCK-00-1.2	NCK-00-0.7-C
SRM3-32	NCK-00-2.6	NCK-00-1.2
SRM3-40	NCK-00-7	NCK-00-2.6
SRM3-63	NCK-00-12	NCK-00-7

### How to order repair parts

**SRM3** - **40** **K** - **200**

Bore size  
(Item **B**) on  
page 1678)

Stroke length  
(Item **D**) on  
page 1678)

### How to order full stroke length adjusting bracket kit (Applies to option code A3.)

**SRM3** - **40** **A1** (Full stroke length adjusting bracket kit with shock absorber)  
**E1** (Full stroke length adjusting bracket kit with light-load shock absorber)

Bore size  
(Item **B**) on  
page 1678)

(For configurations, refer to "Full stroke adjusting bracket kit" on page 1686.)

### Specifications for rechargeable battery (Catalog No. CC-1226A)

- Design compatible with rechargeable battery manufacturing process

**SRM3** - ..... - **P4\***

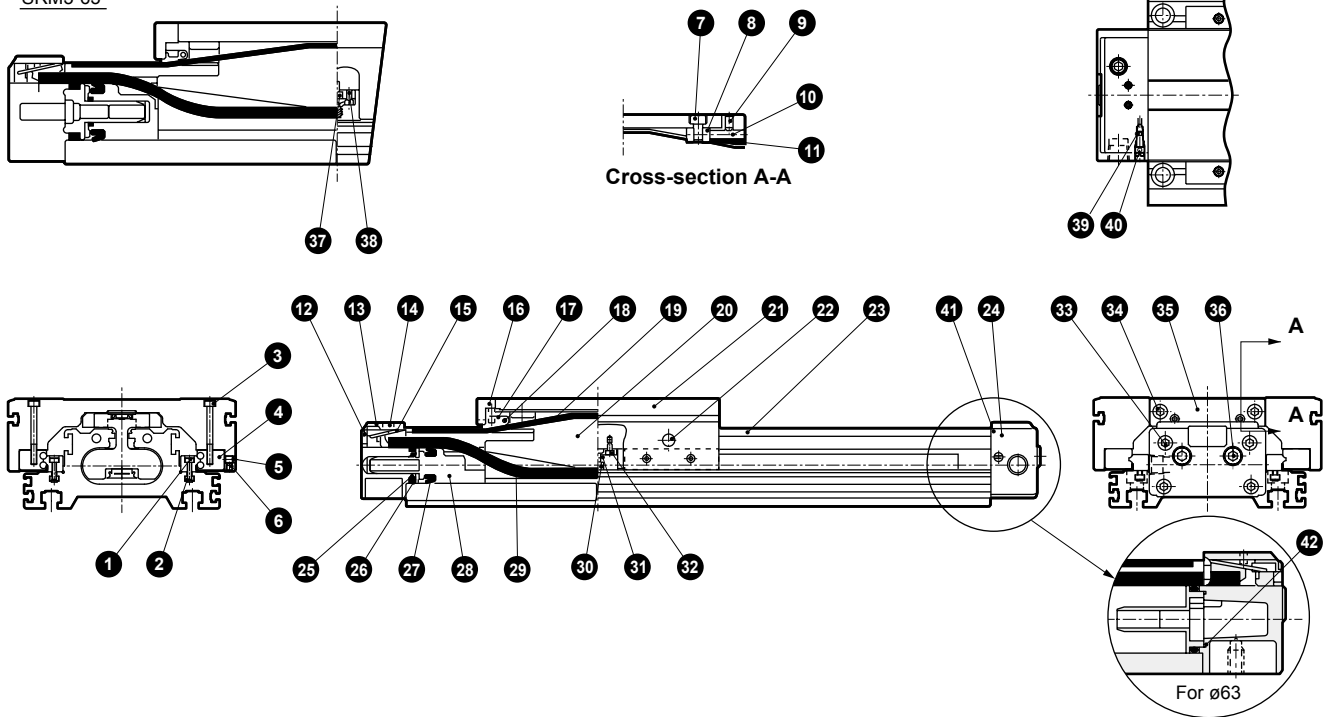
**SRM3 - Q** - ..... - **P4\***

SCP*3
CMK2
CMA2
SCM
SCG
SCA2
SCS2
CKV2
CAV2/ COVP/N2
SSD2
SSG
SSD
CAT
MDC2
MVC
SMG
MSD/ MSDG
FC*
STK
SRL3
SRG3
<b>SRM3</b>
SRT3
MRL2
MRG2
SM-25
ShkAbs
FJ
FK
Spd Contr
Ending

# SRM3 Series

## Internal structure and parts list (ø25 or ø63 equiv.)

SRM3-63



No.	Part name	Material	Remarks	No.	Part name	Material	Remarks
1	Hexagon socket head cap screw	Alloy steel	Black finish	22	Grease nipple (ball bowl)	Copper	Nickel plating
2	Nut rail	Steel	Black finish	23	Cylinder tube	Aluminum alloy	Alumite
3	Hexagon socket head cap screw	Alloy steel	Black finish	24	Cover (R) assembly		
4	High precision guide	Steel		25	Cushion packing	Urethane rubber	
5	Hexagon socket set screw	Alloy steel	Zinc chromate	26	Cylinder gasket	Nitrile rubber	
6	Hexagon socket set screw	Alloy steel	Zinc chromate	27	Piston packing	Nitrile rubber	
7	Hexagon socket head cap screw	Alloy steel	Zinc chromate	28	Piston	Acetal resin	
8	Yoke holder	Steel	Black finish	29	Seal belt	Urethane rubber	
9	Hexagon socket set screw	Alloy steel	Zinc chromate	30	Magnet		
10	Hexagon socket set screw	Alloy steel	Zinc chromate	31	Magnet case	Polyamide	
11	Dust wiper	Acetal resin		32	Hexagon socket head cap screw	Stainless steel	
12	Belt cover	Polyamide		33	Hexagon socket head cap screw	Alloy steel	Zinc chromate
13	Cover (L) assembly			34	Hexagon socket head cap screw	Alloy steel	Zinc chromate
14	Hexagon socket set screw	Alloy steel	Zinc chromate	35	Table cover	Steel	Zinc chromate
15	Belt spacer	Steel	Zinc chromate	36	Plug	Steel	Zinc chromate
16	Spring	Steel	Black finish	37	Spacer	Aluminum alloy	
17	Belt holder	Acetal resin		38	Hexagon socket head cap screw	Stainless steel	
18	Parallel pin	Steel	Zinc chromate	39	Needle gasket	Nitrile rubber	
19	Dust-proof belt	Stainless steel + nitrile rubber		40	Cushion needle	Steel	Zinc chromate
20	Yoke	Aluminum alloy	Alumite	41	O-ring for common port	Nitrile rubber	
21	Table	Aluminum alloy	Alumite	42	Cushion ring gasket	Nitrile rubber	ø63 only

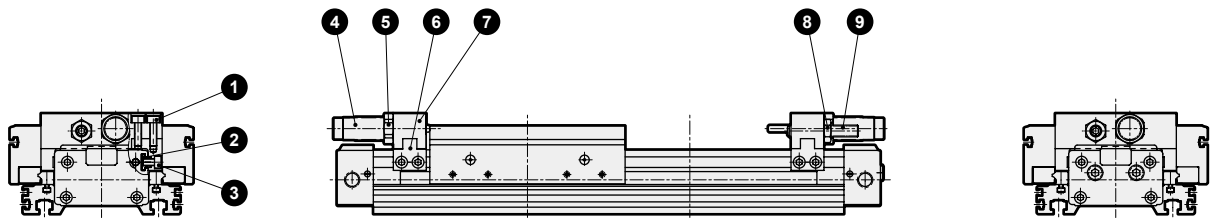
### Repair parts list

No./part name	Kit No.	Repair parts No.
Bore size (mm)		
ø25 or equiv.	SRM3-25K-*	11 19 25 26
ø32 or equiv.	SRM3-32K-*	27 29 39 41
ø40 or equiv.	SRM3-40K-*	
ø63 or equiv.	SRM3-63K-*	11 19 25 26 27 29 39 41 42

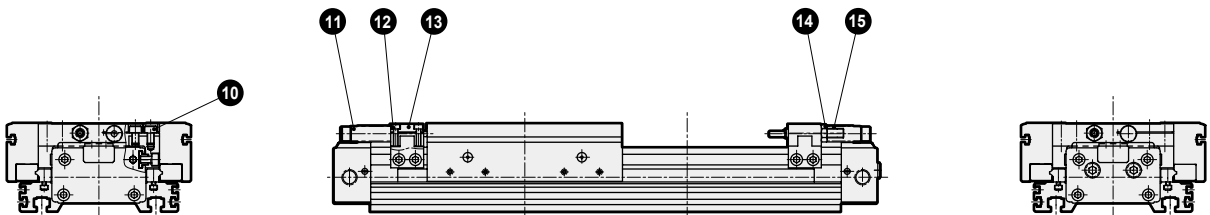
\*1: Specify the kit No. when placing an order. Specify the stroke length for \*.

### Internal structure and parts list: with shock absorber (ø25 to ø63 equiv.)

- Full stroke length adjustable with standard shock absorber (SRM3-\*\*-\*\*\*-A)



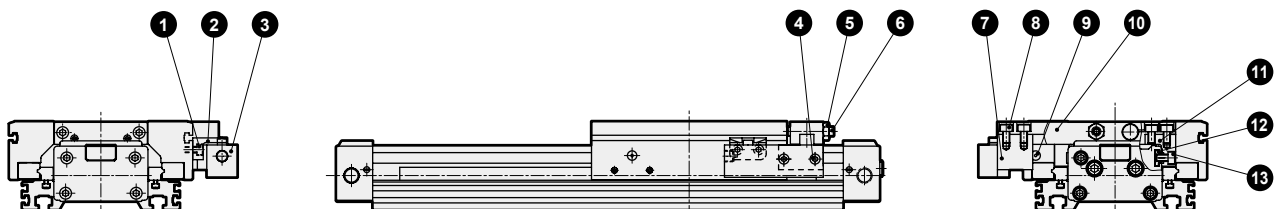
- Full stroke length adjustable with light-load shock absorber (SRM3-\*\*-\*\*\*-E)



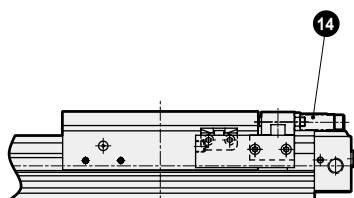
No.	Part name	Material	Remarks	No.	Part name	Material	Remarks
1	Hexagon socket head cap screw	Alloy steel	Galvanizing	9	Hexagon socket set screw	Alloy steel	Galvanizing
2	Adaptor nut	Steel	Black finish	10	Hexagon socket head cap screw	Alloy steel	Galvanizing
3	Hexagon socket head cap screw	Alloy steel	Galvanizing	11	Shock absorber		
4	Shock absorber			12	Hexagon socket head cap screw	Alloy steel	Galvanizing
5	Hexagon nut	Steel	Galvanizing	13	Plate (3)	Aluminum alloy	Alumite
6	Adaptor	Steel	Galvanizing	14	Hexagon nut	Steel	Galvanizing
7	Plate (1)	Aluminum alloy	Alumite	15	Hexagon socket set screw	Alloy steel	Galvanizing
8	Hexagon nut	Steel	Galvanizing				

### Internal structure and parts list: with position locking (ø25 to ø63 equiv.)

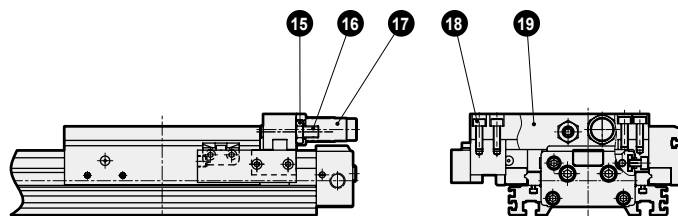
- With position locking (SRM3-Q)



- Position locking/full stroke length adjustable with light-load shock absorber (SRM3-Q-\*\*-\*\*\*-E1)



- Position locking/full stroke length adjustable with standard shock absorber (SRM3-Q-\*\*-\*\*\*-A1)



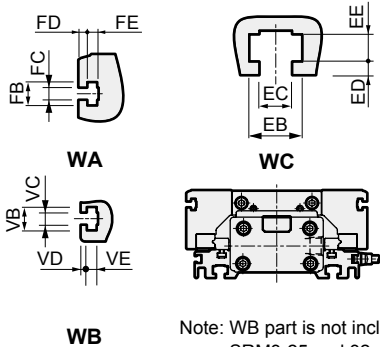
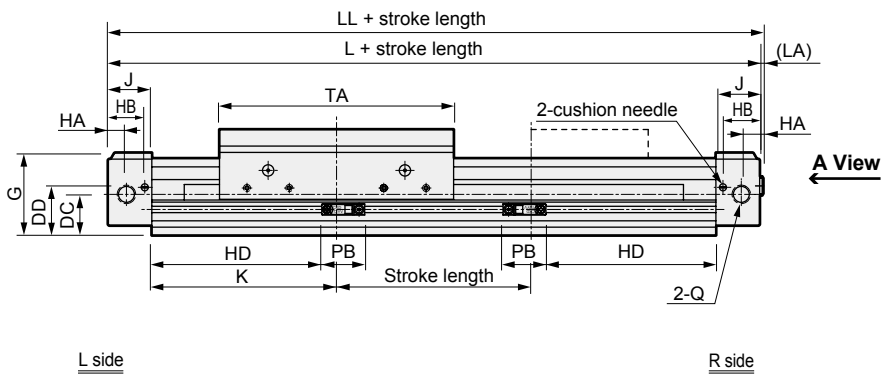
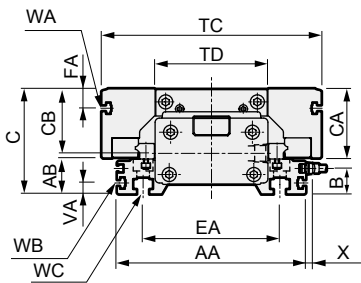
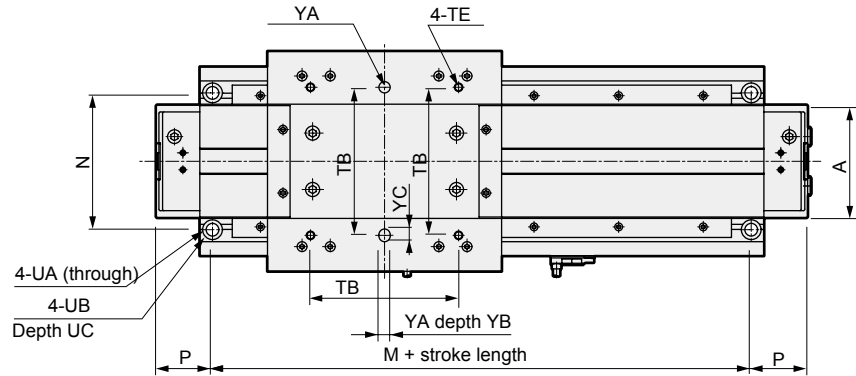
No.	Part name	Material	Remarks	No.	Part name	Material	Remarks
1	Hexagon socket head cap screw	Alloy steel	Galvanizing	10	Plate (4)	Aluminum alloy	Alumite
2	Lock lever	Steel	Galvanizing	11	Adaptor	Steel	Galvanizing
3	Position locking mechanism assembly			12	Adaptor nut	Steel	Black finish
4	Hexagon socket head cap screw	Alloy steel	Galvanizing	13	Hexagon socket head cap screw	Alloy steel	Galvanizing
5	Hexagon nut	Steel	Galvanizing	14	Shock absorber		
6	Hexagon socket set screw	Alloy steel	Galvanizing	15	Hexagon nut	Steel	Galvanizing
7	Installation block	Aluminum alloy	Alumite	16	Hexagon socket set screw	Alloy steel	Galvanizing
8	Hexagon socket head cap screw	Alloy steel	Galvanizing	17	Shock absorber		
9	Grease nipple (ball bowl)	Copper	Nickel plating (not included in SRM-Q-25)	18	Hexagon socket head cap screw	Alloy steel	Galvanizing
				19	Plate (2)	Aluminum alloy	Alumite

# SRM3 Series

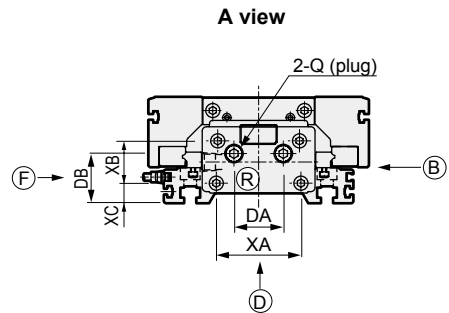
## Dimensions



- With cylinder switch SRM3-\*\*\*\_\*\*\_\*\*\*\_T\*V\*  
(Radial lead wire)



Note: WB part is not included in SRM3-25 and 32.



Code	A	AA	AB	B	C	CA	CB	DA	DB	DC	DD	EA	EB	EC	ED
<b>Code</b>															
<b>Bore size (mm)</b>															
ø25 or equiv.	53	102	18	11.3	57	39	37	26	22	20	21.9	71	9.5	5.5	2.5
ø32 or equiv.	66	116	20	13.3	62	41.5	39.5	27	25	22.5	25.5	80	11	6.6	2.5
ø40 or equiv.	80	134	25	18.3	75	49.5	46	35	35	29	34	97	14.5	9	3.5
ø63 or equiv.	118	188	31.5	24.8	100	68	62.5	39	44.5	37.5	45.5	140	18	11	4
<b>Code</b>															
<b>Bore size (mm)</b>															
ø25 or equiv.	4.5	10	8.5	4.5	3	3.7	43.5	7.5	20	-	24	98	244	2	246
ø32 or equiv.	6	10	8.5	4.5	3	3.7	47.5	10	23.5	17	28	106	268	2.5	270.5
ø40 or equiv.	7.5	14	8.5	4.5	3	3.7	58.5	13	26	22.3	31	131	324	2.5	326.5
ø63 or equiv.	9	20	9.5	5.5	3	4.5	76.5	15	32	31	39	187	452	2.5	454.5

\*1: After shipment, modification from reed switch to proximity switch or vice versa is not possible.

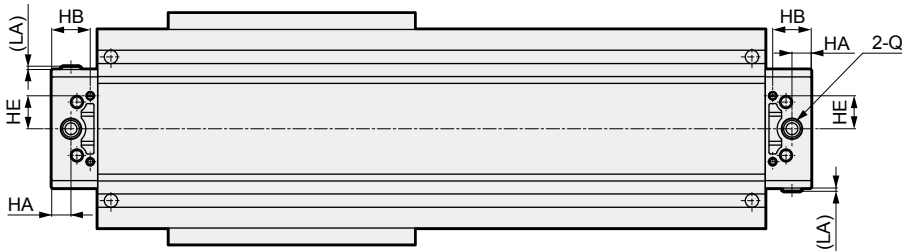
\*2: Option S is not available for ø25.

## Dimensions

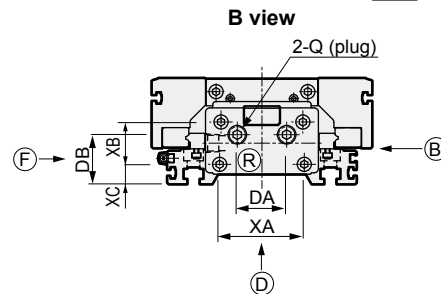
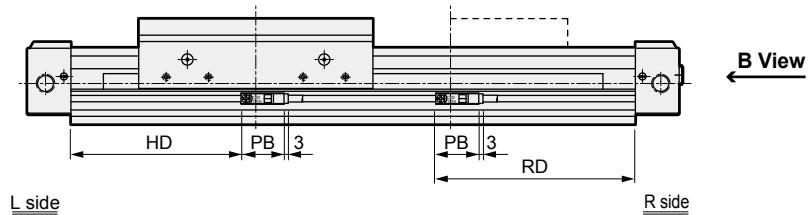
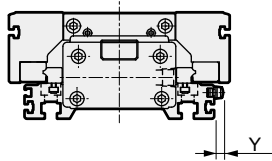
- Bottom piping (option: D/S)
  - $\phi 25$  or equiv.



- $\phi 32$  or equiv. to  $\phi 63$  or equiv.



- With cylinder switch SRM3-\*\*-\*\*\*-\*\*\*\*-T\*H\* (Axial lead wire)



Code	LL	M	N	P	Q	TA	TB	TC	TD	TE	UA	UB
<b>Bore size (mm)</b>												
$\phi 25$ or equiv.	246	182	71	31	Rc1/8	118	75	112	61	M5 depth 12	5.5	9.5 spot face depth 6.5
$\phi 32$ or equiv.	270.5	196	80	36	Rc1/4	132	85	128	65	M6 depth 13	6.6	11 spot face depth 6.5
$\phi 40$ or equiv.	326.5	244	97	40	Rc1/4	166	105	156	81	M6 depth 15	9	14 spot face depth 8.5
$\phi 63$ or equiv.	454.5	350	140	51	Rc3/8	250	160	224	118	M8 depth 20	11	17.5 spot face depth 10.5

Code	VA	VB	VC	VD	VE	XA	XB	XC	YA	YC
<b>Bore size (mm)</b>										
$\phi 25$ or equiv.	-	-	-	-	-	38	23	8.5	$6^{+0.07}_{-0.02}$ depth 6	7
$\phi 32$ or equiv.	-	-	-	-	-	48	25	10	$6^{+0.07}_{-0.02}$ depth 6	7
$\phi 40$ or equiv.	8	8.5	4.5	2	3.7	60	30	14	$8^{+0.07}_{-0.02}$ depth 8	9
$\phi 63$ or equiv.	10	9.5	5.5	2.5	4.5	96	42	16.5	$10^{+0.07}_{-0.02}$ depth 10	12

Code	With switch																			
	T0H/V, T5H/V					T1H/V, T2Y*H/V, T3Y*H/V, T2YD					T8H/V					T2WH/V, T3WH/V				
	RD	HD	X	Y	PB	RD	HD	X	Y	PB	RD	HD	X	Y	PB	RD	HD	X	Y	PB
$\phi 25$ or equiv.	107.5	88.5	4	0.5	22.5	108.5	87.5	9.3(14.5)	6.3(11.5)	30.5(29.5)	102.5	81.5	9.3	6.3	30.5	105.5	90.5	4	0.5	22.5
$\phi 32$ or equiv.	115.5	96.5	4	0.5	22.5	116.5	95.5	9.3(14.5)	6.3(11.5)	30.5(29.5)	110.5	89.5	9.3	6.3	30.5	113.5	98.5	4	0.5	22.5
$\phi 40$ or equiv.	140.5	121.5	4	0.5	22.5	141.5	120.5	9.3(14.5)	6.3(11.5)	30.5(29.5)	135.5	114.5	9.3	6.3	30.5	138.5	123.5	4	0.5	22.5
$\phi 63$ or equiv.	196.5	177.5	4	0.5	22.5	197.5	176.5	9.3(14.5)	6.3(11.5)	30.5(29.5)	191.5	170.5	9.3	6.3	30.5	194.5	179.5	4	0.5	22.5

\*1: Values in ( ) are for T1H/V, strong magnetic field proof.

- SCP\*3
- CMK2
- CMA2
- SCM
- SCG
- SCA2
- SCS2
- CKV2
- CAV2/COVP/N2
- SSD2
- SSG
- SSD
- CAT
- MDC2
- MVC
- SMG
- MSD/MSDG
- FC\*
- STK
- SRL3
- SRG3
- SRM3
- SRT3
- MRL2
- MRG2
- SM-25
- ShkAbs
- FJ
- FK
- Spd Contr
- Ending

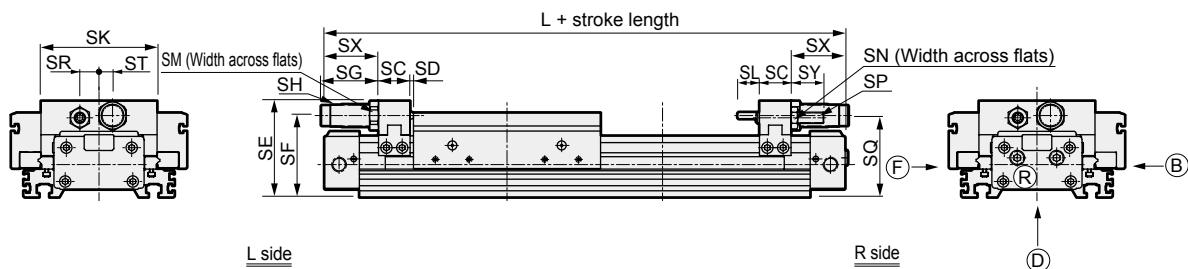
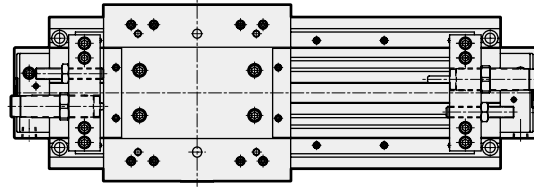


## Dimensions

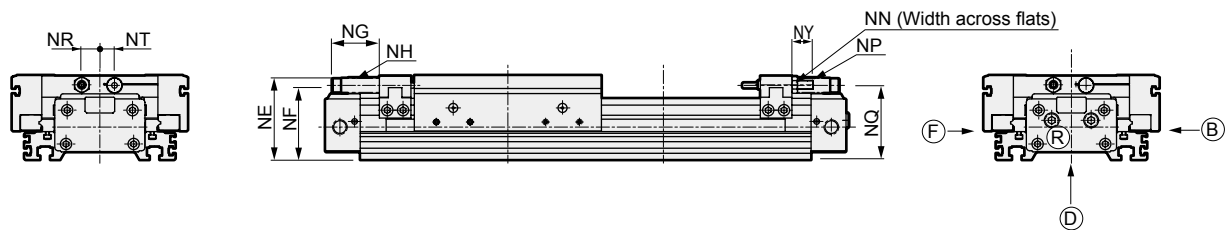
- Full stroke length adjustable with standard shock absorber (SRM3-\*\*-\*\*\*-A)



Note: In SRM3-25-A, the shock absorber is installed inside the cover.



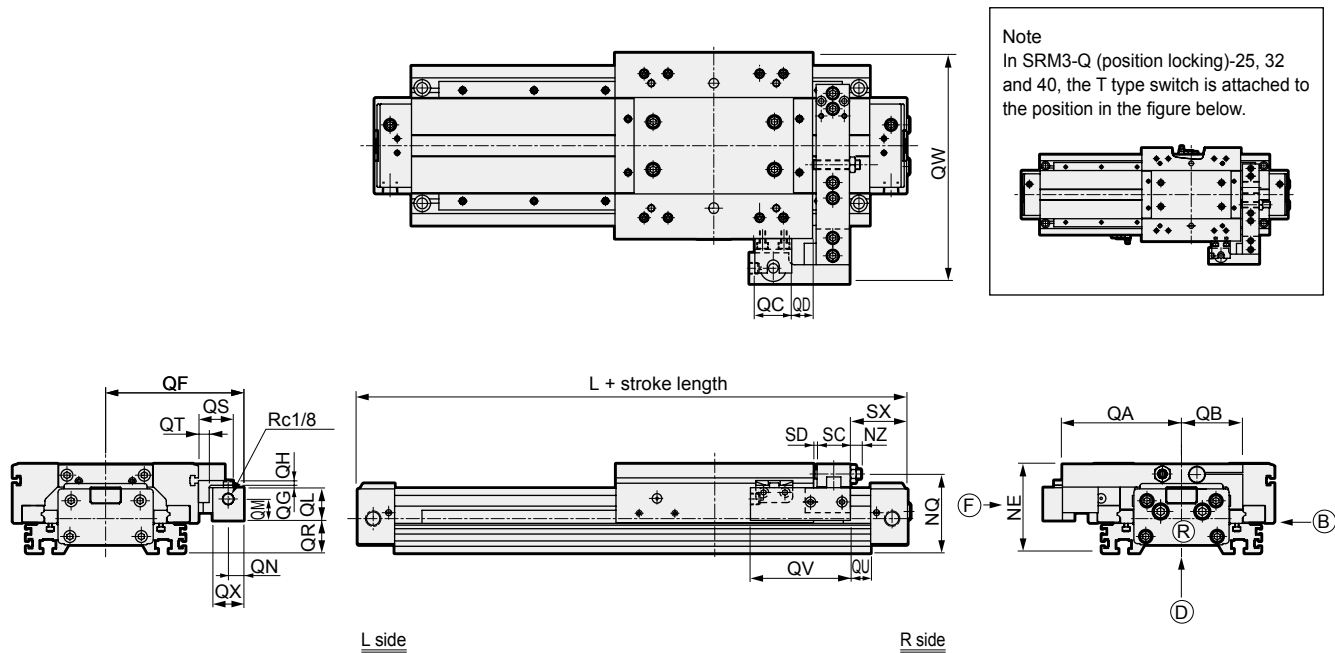
- Full stroke length adjustable with light-load shock absorber (SRM3-\*\*-\*\*\*-E)



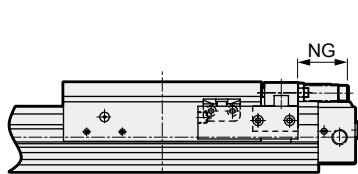
Code	SC	SD	SE	SF	SG			SH		SK	SL	SM	SN	SP	SQ	SR	ST
					At max.	At min.	Adj range	O.D. thread	Max. absorbed energy (J)								
SRG3	24	2	66	54.5	22.5	12.5	10	M12×1.0	12	78	11	17	10	M6	53	12	10
SRM3	24	2	70.5	59.5	47	37	10	M14×1.5	26	86	15	19	13	M8	57.5	14	12
SRT3	28	3	85.5	72.5	51	41	10	M20×1.5	70	103	19.5	24	17	M10	70.5	17	12
	36	4	114.5	96	68	58	10	M25×1.5	120	150	25	32	24	M16	91.5	25	20
Code	SX	SY	NE	NF	NG			NH		NN	NP	NQ	NR	NT	NY	L	
Bore size (mm)					At max.	At min.	Adj range	O.D. thread	Max. absorbed energy (J)								
MRL2	37	14	56.5	50	24	14	10	M10×1.0	7	10	M6	50	11	8	14	244	
MRG2	42	24	61.5	54	22.5	12.5	10	M12×1.0	12	10	M6	54	12	11	14	268	
SM-25	48	29	74.5	66	42	32	10	M14×1.5	26	13	M8	66.5	16	13	19	324	
	ShkAbs	61	40	99.5	87.5	42	32	10	M20×1.5	70	19	M12	88	16	20	30	452

### Dimensions

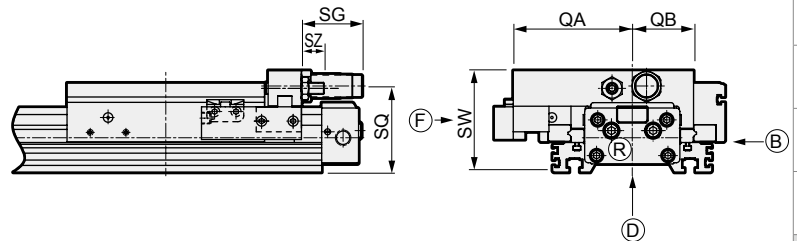
- Position locking (SRM3-Q)



- Position locking/full stroke length adjustable with light-load shock absorber (SRM3-Q-\*\*-\*\*\*-E1)



- Position locking/full stroke length adjustable with standard shock absorber (SRM3-Q-\*\*-\*\*\*-A1)



Code	QA	QB	QC	QD	QF	QG	QH	QL	QM	QN	QR	QS	QT	QV	QU
Bore size (mm)															
ø25 or equiv.	78	39	31	26.5	94	2	4	27.5	18	13	13	29	9	84	17
ø32 or equiv.	86	43	31	26.5	102	2	4	27.5	18	13	16.5	29	9	84	18
ø40 or equiv.	100	51.5	31	17.5	116	2	4	27.5	18	13	27.5	29	9	84	17
ø63 or equiv.	140	75	34	20.5	156	2	5	33	21.5	15	41	36	12	100	22
Code	QX	QW	NE	NG	NQ	NZ	SC	SD	SW	SG	SQ	SX	SZ	L	
Bore size (mm)															
ø25 or equiv.	26	150	56.5	24	50	4	24	2	66	22.5	53	37	4	244	
ø32 or equiv.	26	166	61.5	22.5	54	4	24	2	69.5	47	57.5	42	9	268	
ø40 or equiv.	26	194	74.5	42	66.5	9	28	3	85.5	51	70.5	48	19	324	
ø63 or equiv.	30	268	99.5	42	88	15	36	4	114.5	68	91.5	61	20	452	

- SCP\*3
- CMK2
- CMA2
- SCM
- SCG
- SCA2
- SCS2
- CKV2
- CAV2/COVP/N2
- SSD2
- SSG
- SSD
- CAT
- MDC2
- MVC
- SMG
- MSD/MSDG
- FC\*
- STK
- SRL3
- SRG3
- SRM3**
- SRT3
- MRL2
- MRG2
- SM-25
- ShkAbs
- FJ
- FK
- Spd Contr
- Ending

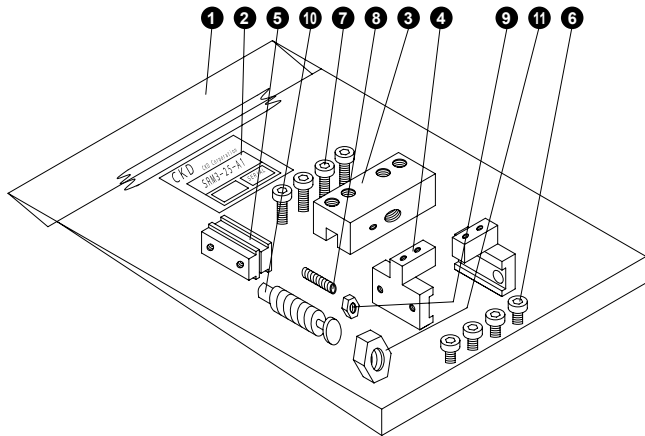
SCP\*3  
CMK2  
CMA2  
SCM  
SCG  
SCA2  
SCS2  
CKV2  
CAV2/  
COVPIN2  
SSD2  
SSG  
SSD  
CAT  
MDC2  
MVC  
SMG  
MSD/  
MSDG  
FC\*  
STK  
SRL3  
SRG3  
SRM3  
SRT3  
MRL2  
MRG2  
SM-25  
ShkAbs  
FJ  
FK  
Spd  
Contr  
Ending

## Full stroke length adjusting bracket kit

● Full stroke length adjusting bracket kit (with shock absorber)

**SRM3 - 25 - A1**

Bore size  
(Item ⑧ on page 1678)

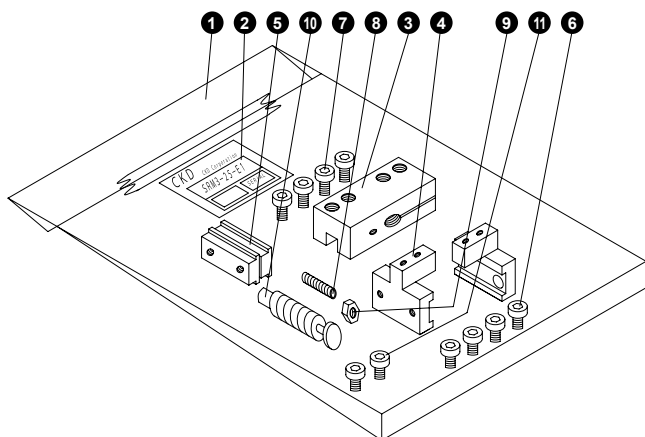


No.	Part name	Quantity
1	Plastic bag	1
2	Package label	1
3	Plate (1)	1
4	Adaptor	2
5	Adaptor nut	2
6	Hexagon socket head cap screw	4
7	Hexagon socket head cap screw	4
8	Hexagon socket set screw	1
9	Hexagon nut	1
10	Shock absorber	1
11	Hexagon nut	1

● Full stroke length adjusting bracket kit (with light-load shock absorber)

**SRM3 - 25 - E1**

Bore size  
(Item ⑧ on page 1678)



No.	Part name	Quantity
1	Plastic bag	1
2	Package label	1
3	Plate (3)	1
4	Adaptor	2
5	Adaptor nut	2
6	Hexagon socket head cap screw	4
7	Hexagon socket head cap screw	4
8	Hexagon socket set screw	1
9	Hexagon nut	1
10	Shock absorber	1
11	Hexagon nut	1

## Kit weight list

### Repair parts kit

Kit No.	Weight (g)
SRM3-25K-□	29 + 10 × stroke length/100
SRM3-32K-□	33 + 10 × stroke length/100
SRM3-40K-□	66 + 18 × stroke length/100
SRM3-63K-□	115 + 18 × stroke length/100

### Full stroke length adjusting bracket kit (with light-load shock absorber)

Kit No.	Weight (g)
SRM3-25-E1	174
SRM3-32-E1	207
SRM3-40-E1	349
SRM3-63-E1	930

### Full stroke length adjusting bracket kit (with shock absorber)

Kit No.	Weight (g)
SRM3-25-A1	247
SRM3-32-A1	298
SRM3-40-A1	581
SRM3-63-A1	1316

SCP\*3

CMK2

CMA2

SCM

SCG

SCA2

SCS2

CKV2

CAV2/  
COVP/N2

SSD2

SSG

SSD

CAT

MDC2

MVC

SMG

MSD/  
MSDG

FC\*

STK

SRL3

SRG3

SRM3

SRT3

MRL2

MRG2

SM-25

ShkAbs

FJ

FK

Spd  
Contr

Ending