

LCM
LCR
LCG
LCW
LCX
STM
STG
STS/STL
STR2
UCA2
ULK*
JSK/M2
JSG
JSC3/JSC4
USSD
UFCD
UFCD
UB
JSB3
LMB
LML
HCM
HCA
LBC
CAC4
UCAC2
CAC-N
UCAC-N
RCS2
RCC2
PCC
SHC
MCP
GLC
MFC
BBS
RRC
GRC
RV3*
NHS
HRL
LN
Hand
Chuk
MecHnd/Chuk
ShkAbs
FJ
FK
SpdContr
Ending



High energy absorption cylinder Double acting/single rod

HCM Series

● Bore size: $\phi 20/\phi 25/\phi 32/\phi 40/\phi 50/\phi 63$

JIS symbol



Specifications

Item	HCM						
Bore size	mm	$\phi 20$	$\phi 25$	$\phi 32$	$\phi 40$	$\phi 50$	$\phi 63$
Actuation		Double acting					
Working fluid		Compressed air					
Max. working pressure	MPa	1.0 (≈ 150 psi, 10 bar)					
Min. working pressure	MPa	0.15 (≈ 22 psi, 1.5 bar)					
Proof pressure	MPa	1.6 (≈ 230 psi, 16 bar)					
Ambient temperature	$^{\circ}\text{C}$	-10 (14°F) to 60 (140°F) (no freezing)					
Port size		Rc1/8	Rc1/8	Rc1/4	Rc1/4	Rc3/8	Rc3/8
Stroke tolerance	mm	$^{+2.0}_0$					
Working piston speed	mm/s	50 to 2000 (Operate within the allowable absorbed energy.)					
Cushion		With air cushion					
Lubrication		Not required (use turbine oil class 1 ISO VG32 if necessary for lubrication)					
Max absorbed energy J *1 With air cushion		3	5	9	14	23	30
Effective air cushion length	mm	56.5	56.5	56.5	55.5	58.5	58.5

*1 : If kinetic energy exceeds these values, consider using a separate shock absorber.
Refer to pages 970 to 973 for energy calculation and size selection.

Stroke length

Bore size (mm)	Standard stroke length (mm)	Max. stroke length (mm)	Min. stroke length (mm)
$\phi 20$	200 to 700	700	1
$\phi 25$			
$\phi 32$			
$\phi 40$	200 to 1000	1000	
$\phi 50$			
$\phi 63$			

*1 : The custom stroke length is available in 1 mm increments.

*2 : Consult with CKD about stroke lengths other than the above.

*3 : The stroke is available from 1 mm. However, this product's cushion area is longer than a typical cylinder, allowing high absorbed energy. Therefore, at the stroke length below or less, the cushion is usually applied, and the effects of high-speed use cannot be obtained.

Model No.	Stroke at which high-speed effects cannot be obtained	Recommended stroke length
HCM	150 mm stroke length or less	300 mm stroke length or more

Number of installed switches and min. stroke length (mm)

Switch quantity	1		2		3		4		5	
	Proximity	Reed	Proximity	Reed	Proximity	Reed	Proximity	Reed	Proximity	Reed
$\phi 20$	10		25		40	50	55		75	85
$\phi 25$	10		25		40	50	55		75	85
$\phi 32$	10		25		40	50	55		75	85
$\phi 40$	10		25		40	50	55		75	85
$\phi 50$	10		25		40	50	55		75	85
$\phi 63$	10		25		40	50	55		75	85

Switch specifications

● 1-color/2-color display/for AC magnetic field proof

Item	Proximity 2-wire		Proximity 2-wire		Proximity 3-wire				Reed 2-wire				Proximity 2-wire			
	T1H/ T1V	T2H/T2V/ T2JH/ T2JV	T2YH/ T2YV	T2WH/ T2WV	T3H/ T3V	T3PH/ T3PV	T3YH/ T3YV	T3WH/ T3WV	T0H/T0V	T5H/T5V	T8H/T8V	T2YD(*4) T2YDT				
Applications	For programmable controller, relay, compact solenoid valve	Dedicated for programmable controller			For programmable controller, relay				For programmable controller, relay	For programmable controller, relay, IC circuit (no indicator lamp), serial connection	For programmable controller, relay	For programmable controller				
Output method	-				NPN output	PNP output	NPN output	NPN output	-							
Pwr. supp. V.	-				10 to 28 VDC				-							
Load voltage	85 to 265 VAC	10 to 30 VDC	24 VDC ±10%		30 VDC or less				12/24 VDC	100/110 VAC	5/12/24 VDC	100/110 VAC	12/24 VDC	110 VAC	220 VAC	24 VDC ±10%
Load current	5 to 100 mA	5 to 20 mA (*3)			100 mA or less		50 mA or less		5 to 50 mA	7 to 20 mA	≤50 mA	≤20 mA	5 to 50 mA	7 to 20 mA	7 to 10 mA	5 to 20 mA
Indicator lamp	LED (Lit when ON)	LED (Lit when ON)	Red/green LED (Lit when ON)	Red/green LED (Lit when ON)	LED (Lit when ON)	Yellow LED (Lit when ON)	Red/green LED (Lit when ON)	Red/green LED (Lit when ON)	LED (Lit when ON)	Without indicator lamp	LED (Lit when ON)	Red/green LED (Lit when ON)				
Leakage current	≤1 mA at 100 VAC, ≤2 mA at 200 VAC	1 mA or less			10 µA or less				0 mA				1 mA or less			
Weight g	1 m:33 3 m:87 5 m:142	1 m:18 3 m:49 5 m:80	1 m:33 3 m:87 5 m:142	1 m:18 3 m:49 5 m:80	1 m:18 3 m:49 5 m:80	1 m:33 3 m:87 5 m:142	1 m:18 3 m:49 5 m:80		1 m:18 3 m:49 5 m:80		1 m:33 3 m:87 5 m:142	1 m:61 3 m:166 5 m:272				

*1 : Refer to Ending Page 1 for detailed switch specifications and dimensions.

*2 : Switches other than the above models, such as switches with connectors, are also available. Refer to Ending Page 1.

*3 : The max. load current is 20 mA at 25°C. The current is lower than 20 mA if the operating ambient temperature around the switch is higher than 25°C. (5 to 10 mA at 60°C)

*4 : AC magnetic field proof switch (T2YD/T2YDT) cannot be used in DC magnetic fields.

Cylinder weight

(Unit: kg)

Bore size (mm)		ø20	ø25	ø32	ø40	ø50	ø63
Product weight for 0 mm stroke length	Basic 00	0.33	0.47	0.62	0.98	1.58	2.27
	Axial foot LB	0.44	0.6	0.78	1.2	2.06	2.99
	Flange FA/FB	0.36	0.51	0.68	1.06	1.92	2.77
Switch weight (per 1 pc.)	Refer to the weight indicated in the switch specifications.						
Additional weight per stroke length without switch rail 100 mm		0.012	0.016	0.017	0.027	0.040	0.044
Additional weight per stroke length with switch rail 100 mm		0.014	0.018	0.019	0.029	0.042	0.046

[Example of calculation]

Product weight of HCM-LB-40B-500-T2H-D

Product weight for stroke length 0 mm 1.2 kg
 Additional weight for stroke length 500 mm $0.029 \times \frac{500}{100} = 0.145$ kg
 Weight of 2 switches $0.018 \times 2 = 0.036$ kg
 Product weight $1.2 + 0.145 + 0.036 = 1.381$ kg

Theoretical thrust table

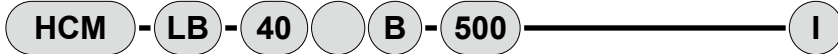
(Unit: N)

Bore size (mm)	Operating direction	Working pressure MPa									
		0.15	0.2	0.3	0.4	0.5	0.6	0.7	0.8	0.9	1.0
ø20	Push	47.1	62.8	94.2	1.26×10^2	1.57×10^2	1.88×10^2	2.20×10^2	2.51×10^2	2.83×10^2	3.14×10^2
	Pull	35.3	47.1	70.7	94.2	1.18×10^2	1.41×10^2	1.65×10^2	1.88×10^2	2.12×10^2	2.36×10^2
ø25	Push	73.6	98.2	1.47×10^2	1.96×10^2	2.45×10^2	2.95×10^2	3.44×10^2	3.93×10^2	4.42×10^2	4.91×10^2
	Pull	56.7	75.6	1.13×10^2	1.51×10^2	1.89×10^2	2.27×10^2	2.64×10^2	3.02×10^2	3.40×10^2	3.78×10^2
ø32	Push	1.21×10^2	1.61×10^2	2.41×10^2	3.22×10^2	4.02×10^2	4.83×10^2	5.63×10^2	6.43×10^2	7.24×10^2	8.04×10^2
	Pull	1.04×10^2	1.38×10^2	2.07×10^2	2.76×10^2	3.46×10^2	4.15×10^2	4.84×10^2	5.53×10^2	6.22×10^2	6.91×10^2
ø40	Push	1.88×10^2	2.51×10^2	3.77×10^2	5.03×10^2	6.28×10^2	7.54×10^2	8.80×10^2	1.01×10^3	1.13×10^3	1.26×10^3
	Pull	1.58×10^2	2.11×10^2	3.17×10^2	4.22×10^2	5.28×10^2	6.33×10^2	7.39×10^2	8.44×10^2	9.50×10^2	1.06×10^3
ø50	Push	2.95×10^2	3.93×10^2	5.89×10^2	7.85×10^2	9.82×10^2	1.18×10^3	1.37×10^3	1.57×10^3	1.77×10^3	1.96×10^3
	Pull	2.47×10^2	3.30×10^2	4.95×10^2	6.60×10^2	8.25×10^2	9.90×10^2	1.15×10^3	1.32×10^3	1.48×10^3	1.65×10^3
ø63	Push	4.68×10^2	6.23×10^2	9.35×10^2	1.25×10^3	1.56×10^3	1.87×10^3	2.18×10^3	2.49×10^3	2.81×10^3	3.12×10^3
	Pull	4.20×10^2	5.61×10^2	8.41×10^2	1.12×10^3	1.40×10^3	1.68×10^3	1.96×10^3	2.24×10^3	2.52×10^3	2.80×10^3

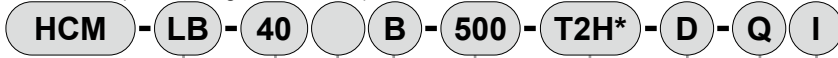
LCM
LCR
LCG
LCW
LCX
STM
STG
STS/STL
STR2
UCA2
ULK*
JSK/M2
JSG
JSC3/JSC4
USSD
UFCD
UFCD
UB
JSB3
LMB
LML
HCM
HCA
LBC
CAC4
UCAC2
CAC-N
UCAC-N
RCS2
RCC2
PCC
SHC
MCP
GLC
MFC
BBS
RRC
GRC
RV3*
NHS
HRL
LN
Hand
Chuk
MecHnd/Chuk
ShkAbs
FJ
FK
SpdContr
Ending

How to order

Without switch (built-in magnet for switch)



With switch (built-in magnet for switch)



A Mounting
*1

B Bore size

C Port thread

D Cushion

E Stroke length

F Switch model No.
*2

G Switch quantity

H Option

I Accessory
*3

⚠ Precautions for model No. selection

*1 : Mounting bracket will be shipped with the product.

*2 : Switches other than **F** Switch model No. are also available.

(Made to order) Refer to Ending Page 1 for details.

*3 : "I" and "Y" cannot be selected together.

[Example of model No.]

HCM-LB-40B-500-T2H-D-QI

Model: High energy absorption cylinder double acting

- A** Mounting : Axial foot
- B** Bore size : $\varnothing 40$ mm
- C** Port thread : Rc thread
- D** Cushion : Both sides cushioned
- E** Stroke length : 500 mm
- F** Switch model No.: Proximity T2H switch, lead wire 1 m
- G** Switch quantity : 2
- H** Option : Switch rail attached at shipment
- I** Accessory : Rod eye

Code	Description
A Mounting	
00	Basic
LB	Axial foot
FA	Rod side flange
FB	Head side flange

B Bore size (mm)	
20	$\varnothing 20$
25	$\varnothing 25$
32	$\varnothing 32$
40	$\varnothing 40$
50	$\varnothing 50$
63	$\varnothing 63$

C Port thread	
Blank	Rc thread
N	NPT thread (made-to-order product)
G	G thread (made-to-order product)

D Cushion	
B	Both sides cushioned
R	Rod side cushioned
H	Head side cushioned
N	Without cushion

E Stroke length (mm)		
Bore size	Stroke length	Custom stroke length
$\varnothing 20$ to $\varnothing 32$	1 to 700	In 1 mm
$\varnothing 40$ to $\varnothing 63$	1 to 1000	increments

F Switch model No.						
Axial lead wire	Radial lead wire	Contact	Voltage		Indicator	Lead wire
			AC	DC		
T0H*	T0V*	Reed	●	●	1-color display	2-wire
T5H*	T5V*		●	●	Without indicator lamp	
T8H*	T8V*		●	●	1-color display	
T1H*	T1V*	Proximity	●	●	1-color display	2-wire
T2H*	T2V*		●	●		
T3H*	T3V*		●	●	3-wire	
T3PH*	T3PV*		●	●		
T2WH*	T2WV*		●	●	2-wire	
T2YH*	T2YV*		●	●		
T3WH*	T3WV*		●	●	3-wire	
T3YH*	T3YV*		●	●		
T2YD*	-	●	●	Strong magn field proof	2-wire	
T2YDT*	-	●	●	(For AC magnetic field)		
T2JH*	T2JV*	●	●	Off-delay	2-wire	

* Lead wire length	
Blank	1 m (standard)
3	3 m (option)
5	5 m (option)

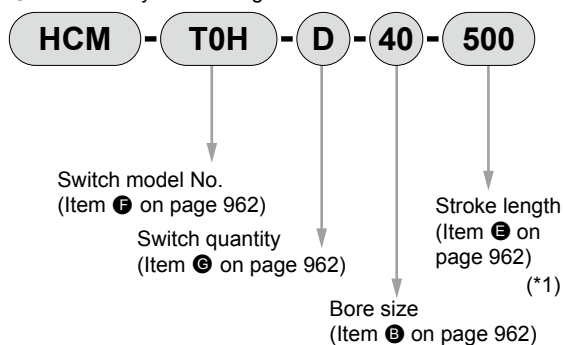
G Switch quantity	
R	1 on rod side
H	1 on head side
D	2
T	3
4	4
5	5

H Option	
Q	Switch rail attached at shipment
M	Piston rod material (stainless steel)

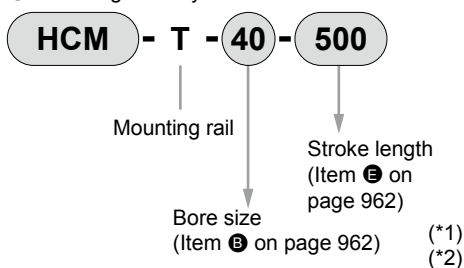
I Accessory	
I	Rod eye
Y	Rod clevis (pin and snap ring attached)

How to order switch

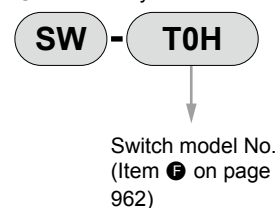
● Switch body + mounting rail set



● Mounting rail only



● Switch only



*1 : Indicate X if the stroke length exceeds 300 mm. If exceeding 300 mm, a short rail (with 100 mm switch adjustment travel distance) will be included per switch.

*2 : If indicating X when ordering mounting rails only, order the same number of rails as that of applicable switches.

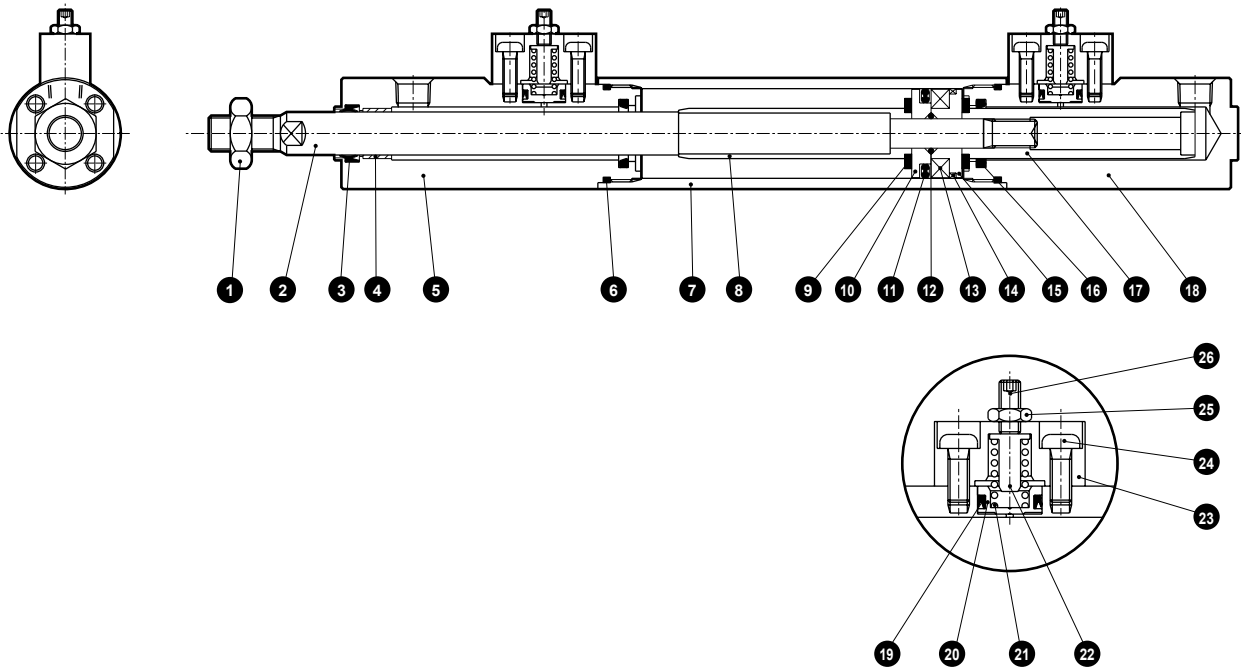
Mounting bracket model No.

Bore size / Mounting	Foot (LB)	Flange (FA/FB)
ø20	HCM-LB-20	HCM-FA-20
ø25	HCM-LB-25	HCM-FA-25
ø32	HCM-LB-32	HCM-FA-32
ø40	HCM-LB-40	HCM-FA-40
ø50	HCM-LB-50	HCM-FA-50
ø63	HCM-LB-63	HCM-FA-63

*1 : The foot mounting bracket is provided as 2 pcs./set.

LCM
LCR
LCG
LCW
LCX
STM
STG
STS/STL
STR2
UCA2
ULK*
JSK/M2
JSG
JSC3/JSC4
USSD
UFCD
USC
UB
JSB3
LMB
LML
HCM
HCA
LBC
CAC4
UCAC2
CAC-N
UCAC-N
RCS2
RCC2
PCC
SHC
MCP
GLC
MFC
BBS
RRC
GRC
RV3*
NHS
HRL
LN
Hand
Chuk
MechHnd/Chuk
ShkAbs
FJ
FK
SpdContr
Ending

Internal structure and parts list



No.	Part name	Material	Remarks	No.	Part name	Material	Remarks
1	Rod nut	Steel	Nickeling	14	Wear ring	Resin	
2	Piston rod	ø20/ø25: Stainless steel ø32 to ø63: Steel	Industrial chrome plating	15	Piston (H)	Aluminum alloy	Chromate treatment
3	Rod packing	Nitrile rubber		16	Cushion packing	ø20 to ø32: Urethane ø40 to ø63: Urethane, steel	
4	Bush	Oil impregnated bearing alloy		17	Cushion ring (H)	Aluminum alloy	Chromate treatment
5	Rod cover	Aluminum alloy	Black alumite	18	Head cover	Aluminum alloy	Black alumite
6	Cylinder gasket	Nitrile rubber		19	Relief valve packing	Nitrile rubber	
7	Cylinder tube	Aluminum alloy	Hard alumite	20	Relief valve	Copper alloy	
8	Cushion ring (R)	Aluminum alloy	Chromate treatment	21	Spring	Steel	Electrodeposition
9	Cushion rubber	Urethane rubber		22	Spring collar	Steel	Chromate treatment
10	Piston (R)	Aluminum alloy	Chromate treatment	23	Relief valve holder	Aluminum alloy	Black alumite
11	Piston packing	Nitrile rubber		24	Cross-recessed pan head machine screw	Steel	Zinc chromate
12	Piston gasket	Nitrile rubber	ø25 to ø63	25	Hexagon nut	Steel	Black finish
13	Magnet	Plastic		26	Hexagon socket set screw	Steel	Black finish

Repair parts list

Bore size (mm)	Kit No.	Repair parts No.
ø 20	HCM-20K	
ø 25	HCM-25K	
ø 32	HCM-32K	3 6 9 11 14
ø 40	HCM-40K	16 19
ø 50	HCM-50K	
ø 63	HCM-63K	

Note : Specify the kit No. when placing an order.

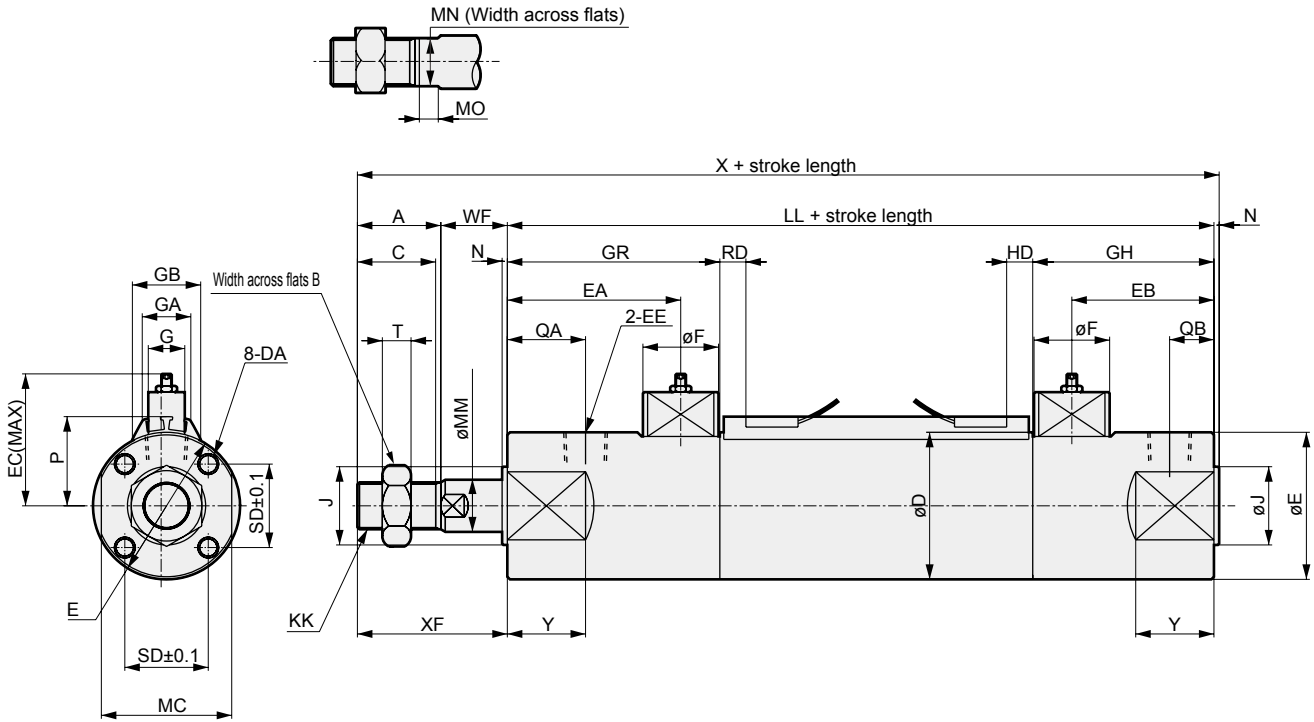
Material and treatment of mounting bracket

Mounting	Material	Treatment
LB	Steel	Zinc chromate
FA/FB	ø20 to ø40	Aluminum alloy
	ø50/ø63	Steel

Dimensions



● Basic (00)



Code	A	B	C	D	DA	E	EA	EB	EC	EE	F	G	J	KK	LL	MC	MM	MN	MO	N	
Bore size																					
ø20	18	13	16	26	M4 depth 8	28	52	43	32.7	Rc1/8	29	14	13	M8	164	24	10	8	5	2	
ø25	20	17	18	31	M5 depth 9	31	56.5	47.5	34.5	Rc1/8	29	14	15	M10X1.25	173	27	12	10	6	2	
ø32	20	17	18	37	M5 depth 9	37	56.5	47.5	37.8	Rc1/4	29	14	18	M10X1.25	173	32	12	10	6	2	
ø40	26	22	24	46	M6 depth 10	46	62	51	47.3	Rc1/4	29	14	25	M14X1.5	186	41	16	14	7	2	
ø50	32	27	30	56.4	M8 depth 12	56.4	66.5	54.5	52.6	Rc3/8	29	14	30	M18X1.5	196	50	20	17	8	2	
ø63	32	27	30	69.4	M10 depth 15	69.4	66.5	54.5	59.3	Rc3/8	29	14	32	M18X1.5	196	60	20	17	8	2	
Code	QA	QB	SD	T	WF	X	XF	Y	GR	GH	GA	GB	P	T0/T5/T2/T3		T8		T2W/T3W		T1/T2/T2Y/T3Y/T2YD	
Bore size														RD	HD	RD	HD	RD	HD	RD	HD
ø20	18	10	14	5	15.5	199.5	33.5	20	67	58	18	23	19.5	10	10	4	4	12	12	9	9
ø25	20	10	16.5	6	17	212	37	20	71.5	62.5	18	24.4	22	11	9	5	3	13	11	10	8
ø32	20	12	20	6	17	212	37	28	71.5	62.5	18	25	25	11	9	5	3	13	11	10	8
ø40	26	14	26	8	20.5	234.5	46.5	28	77	66	18	25.7	29.5	13	11	7	5	15	13	12	10
ø50	30	17	32	11	25.5	255.5	57.5	30	81.5	69.5	18	26.2	34.7	14	12	8	6	16	14	13	11
ø63	30	17	38	11	25.5	255.5	57.5	30	81.5	69.5	18	26.5	41.2	14	12	8	6	16	14	13	11

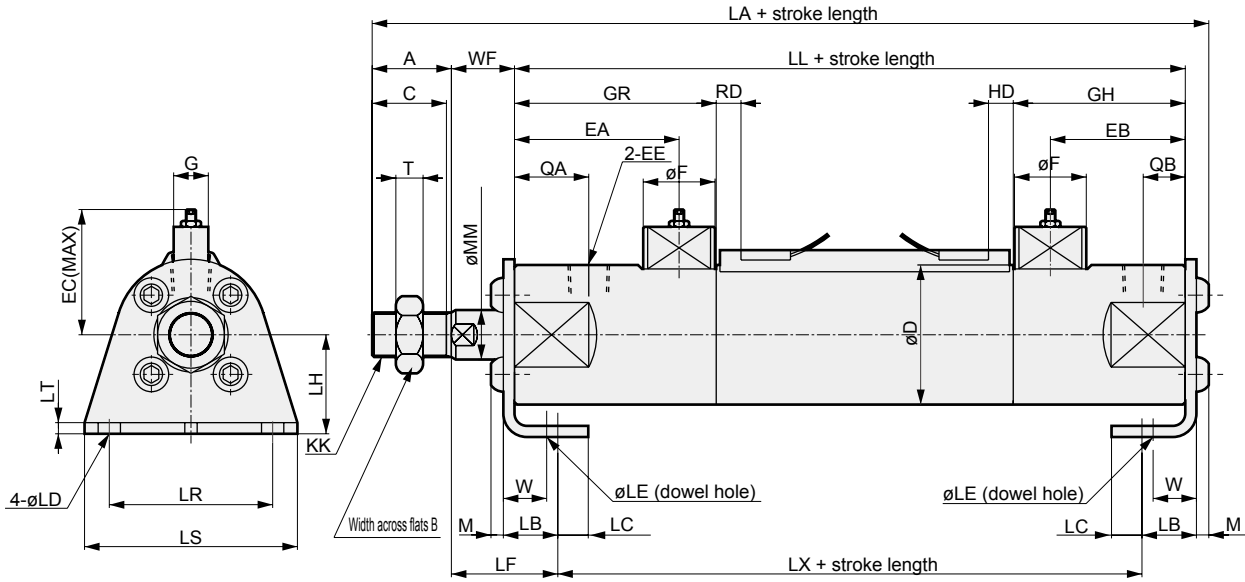
*1 : Tube outer diameter øD and cover outer diameter øE are different for ø20 only.
 *2 : For the dimensions of the accessories, refer to page 969.

LCM
LCR
LCG
LCW
LCX
STM
STG
STS/STL
STR2
UCA2
ULK*
JSK/M2
JSG
JSC3/JSC4
USSD
UFCD
USC
UB
JSB3
LMB
LML
HCM
HCA
LBC
CAC4
UCAC2
CAC-N
UCAC-N
RCS2
RCC2
PCC
SHC
MCP
GLC
MFC
BBS
RRC
GRC
RV3*
NHS
HRL
LN
Hand
Chuk
MechHnd/Chuk
ShkAbs
FJ
FK
SpdContr
Ending

Dimensions



● Axial foot (LB)



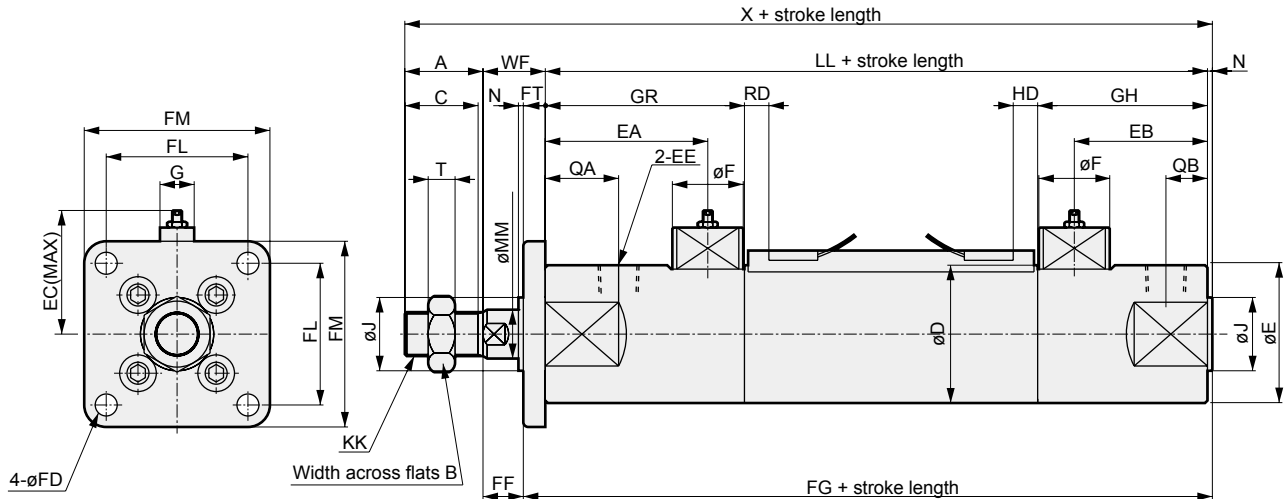
Code	A	B	C	D	EA	EB	EC	EE	F	G	KK	LA	LB	LC	LD	LE	LF	LH	LL		
Bore size																					
ϕ 20	18	13	16	26	52	43	32.7	Rc1/8	29	14	M8	203.3	15.1	7.1	5.7	4	27	20	164		
ϕ 25	20	17	18	31	56.5	47.5	34.5	Rc1/8	29	14	M10X1.25	216.6	15.1	7.1	5.7	4	28.9	22	173		
ϕ 32	20	17	18	37	56.5	47.5	37.8	Rc1/4	29	14	M10X1.25	216.6	16.1	8.1	6.8	4	29.9	25	173		
ϕ 40	26	22	24	46	62	51	47.3	Rc1/4	29	14	M14X1.5	239.7	16.6	9.1	6.8	4	33.9	30	186		
ϕ 50	32	27	30	56.4	66.5	54.5	52.6	Rc3/8	29	14	M18X1.5	263	22	11	9	5	43	40	196		
ϕ 63	32	27	30	69.4	66.5	54.5	59.3	Rc3/8	29	14	M18X1.5	263	22	13	11	5	43	45	196		
Code	LR	LS	LT	LX	M	MM	QA	QB	T	W	WF	GR	GH	T0/T5/T2/T3	T8	T2W/T3W	T1/T2J/T2Y/T3Y/T2YD				
Bore size														RD	HD	RD	HD	RD	HD		
ϕ 20	32	44	3.2	140.2	2.6	10	18	10	5	10	15.5	67	58	10	10	4	4	12	12	9	9
ϕ 25	36	49	3.2	149.2	3.4	12	20	10	6	10	17	71.5	62.5	11	9	5	3	13	11	10	8
ϕ 32	44	58	3.2	147.2	3.4	12	20	12	6	10	17	71.5	62.5	11	9	5	3	13	11	10	8
ϕ 40	54	71	3.2	159.2	4	16	26	14	8	10	20.5	77	66	13	11	7	5	15	13	12	10
ϕ 50	66	86	4.5	161	5	20	30	17	11	17.5	25.5	81.5	69.5	14	12	8	6	16	14	13	11
ϕ 63	82	106	4.5	161	5	20	30	17	11	17.5	25.5	81.5	69.5	14	12	8	6	16	14	13	11

*1 : For the dimensions of the accessories, refer to page 969.

Dimensions



- Rod side flange (FA)



Code	A	B	C	D	E	EA	EB	EC	EE	F	FD	FF	FG	FL	FM	FT	G	J	KK	LL
Code																				
Bore size																				
ø20	18	13	16	26	28	52	43	32.7	Rc1/8	29	5.5	9.5	172	28	40	6	14	13	M8	164
ø25	20	17	18	31	31	56.5	47.5	34.5	Rc1/8	29	5.5	10	182	32	44	7	14	15	M10X1.25	173
ø32	20	17	18	37	37	56.5	47.5	37.8	Rc1/4	29	6.6	10	182	38	53	7	14	18	M10X1.25	173
ø40	26	22	24	46	46	62	51	47.3	Rc1/4	29	6.6	12.5	196	46	61	8	14	25	M14X1.5	186
ø50	32	27	30	56.4	56.4	66.5	54.5	52.6	Rc3/8	29	9	16.5	207	58	76	9	14	30	M18X1.5	196
ø63	32	27	30	69.4	69.4	66.5	54.5	59.3	Rc3/8	29	11	16.5	207	70	92	9	14	32	M18X1.5	196
Code	MM	N	QA	QB	T	WF	X	GR	GH	T0/T5/T2/T3		T8		T2W/T3W		T1/T2/T2Y/T3Y/T2YD				
Bore size										RD	HD	RD	HD	RD	HD	RD	HD			
ø20	10	2	18	10	5	15.5	199.5	67	58	10	10	4	4	12	12	9	9			
ø25	12	2	20	10	6	17	212	71.5	62.5	11	9	5	3	13	11	10	8			
ø32	12	2	20	12	6	17	212	71.5	62.5	11	9	5	3	13	11	10	8			
ø40	16	2	26	14	8	20.5	234.5	77	66	13	11	7	5	15	13	12	10			
ø50	20	2	30	17	11	25.5	255.5	81.5	69.5	14	12	8	6	16	14	13	11			
ø63	20	2	30	17	11	25.5	255.5	81.5	69.5	14	12	8	6	16	14	13	11			

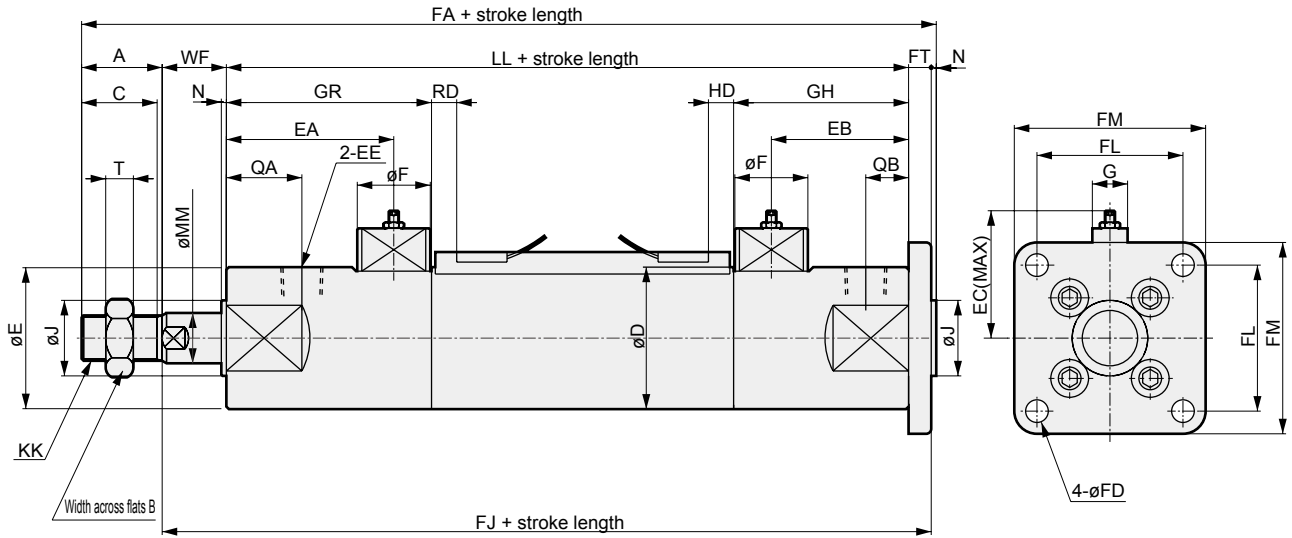
*1 : Tube outer diameter øD and cover outer diameter øE are different for ø20 only.
 *2 : For the dimensions of the accessories, refer to page 969.

LCM
LCR
LCG
LCW
LCX
STM
STG
STS/STL
STR2
UCA2
ULK*
JSK/M2
JSG
JSC3/JSC4
USSD
UFCD
USC
UB
JSB3
LMB
LML
HCM
HCA
LBC
CAC4
UCAC2
CAC-N
UCAC-N
RCS2
RCC2
PCC
SHC
MCP
GLC
MFC
BBS
RRC
GRC
RV3*
NHS
HRL
LN
Hand
Chuk
MechHnd/Chuk
ShkAbs
FJ
FK
SpdContr
Ending

Dimensions



● Head side flange (FB)



Code	A	B	C	D	E	EA	EB	EC	EE	F	FA	FD	FJ	FL	FM	FT	G	J	KK
Bore size																			
ø20	18	13	16	26	28	52	43	32.7	Rc1/8	29	205.5	5.5	185.5	28	40	6	14	13	M8
ø25	20	17	18	31	31	56.5	47.5	34.5	Rc1/8	29	219	5.5	197	32	44	7	14	15	M10X1.25
ø32	20	17	18	37	37	56.5	47.5	37.8	Rc1/4	29	219	6.6	197	38	53	7	14	18	M10X1.25
ø40	26	22	24	46	46	62	51	47.3	Rc1/4	29	242.5	6.6	214.5	46	61	8	14	25	M14X1.5
ø50	32	27	30	56.4	56.4	66.5	54.5	52.6	Rc3/8	29	264.5	9	230.5	58	76	9	14	30	M18X1.5
ø63	32	27	30	69.4	69.4	66.5	54.5	59.3	Rc3/8	29	264.5	11	230.5	70	92	9	14	32	M18X1.5
Code																			
Bore size																			
	LL	MM	N	QA	QB	T	WF	GR	GH	T0/T5/T2/T3		T8		T2W/T3W		T1/T2/T2Y/T3Y/T2YD			
										RD	HD	RD	HD	RD	HD	RD	HD		
ø20	164	10	2	18	10	5	15.5	67	58	10	10	4	4	12	12	9	9		
ø25	173	12	2	20	10	6	17	71.5	62.5	11	9	5	3	13	11	10	8		
ø32	173	12	2	20	12	6	17	71.5	62.5	11	9	5	3	13	11	10	8		
ø40	186	16	2	26	14	8	20.5	77	66	13	11	7	5	15	13	12	10		
ø50	196	20	2	30	17	11	25.5	81.5	69.5	14	12	8	6	16	14	13	11		
ø63	196	20	2	30	17	11	25.5	81.5	69.5	14	12	8	6	16	14	13	11		

*1 : Tube outer diameter øD and cover outer diameter øE are different for ø20 only.

*2 : For the dimensions of the accessories, refer to page 969.

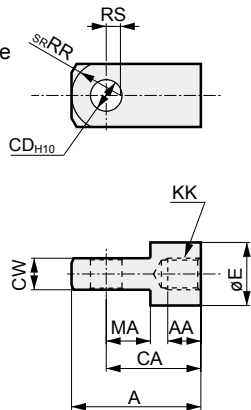
Accessory dimensions

Rod eye

● HCM-I- ϕ 20 to ϕ 25

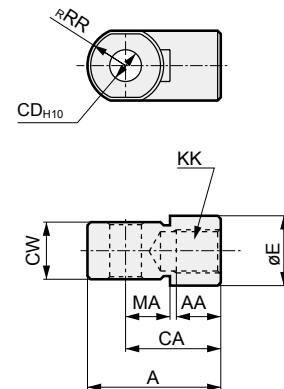


Material: Steel
Zinc chromate treatment



● HCM-I- ϕ 40 to ϕ 63

Material: Cast iron
Painting



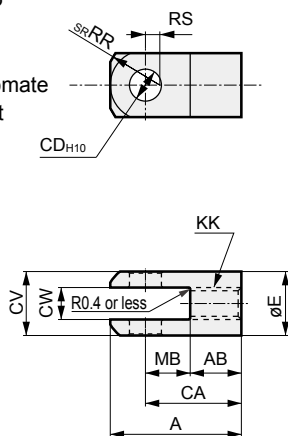
Model No.	Applicable bore size (mm)	A	AA	CA	CD	CW	E	KK	MA	RR	RS	Weight (g)
HCM-I-20	20	34	8.5	25	8	8 ^{+0.2} _{-0.4}	16	M8	11.5	13.4	3.1	39
HCM-I-25	25/32	41	10.5	30	10	10 ^{+0.2} _{-0.4}	20	M10×1.25	14	17.1	4.5	72
HCM-I-40	40	42	14	30	10	18 ^{+0.3} _{-0.5}	22	M14×1.5	14	12	-	152
HCM-I-50	50/63	56	18	40	14	22 ^{+0.3} _{-0.5}	28	M18×1.5	20	16	-	158

Rod clevis

● HCM-Y- ϕ 20 to ϕ 25

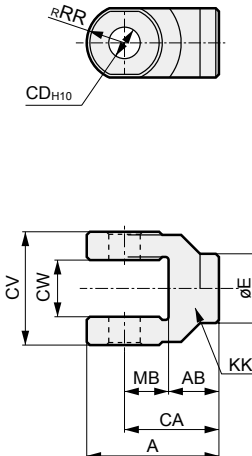


Material: Steel
Zinc chromate treatment



● HCM-Y- ϕ 40 to ϕ 63

Material: Cast iron
Painting



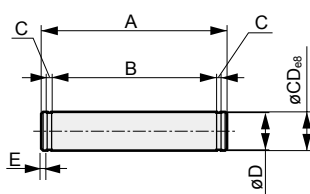
Model No.	Bore size (mm)	A	AB	CA	CD	CV	CW	E	KK	MB	RR	RS	Weight (g)	Applicable pin No.
HCM-Y-20	20	34	13.5	25	8	16	8 ^{+0.2} _{+0.4}	16	M8	11.5	13.4	3.1	46	HCM-P-20
HCM-Y-25	25/32	41	16	30	10	20	10 ^{+0.2} _{+0.4}	20	M10×1.25	14	17.1	4.5	85	HCM-P-25
HCM-Y-40	40	42	16	30	10	36	18 ^{+0.3} _{+0.5}	22	M14×1.5	14	12	-	122	HCM-P-40
HCM-Y-50	50/63	56	20	40	14	44	22 ^{+0.3} _{+0.5}	28	M18×1.5	20	16	-	258	HCM-P-50

Note : A pin and a snap ring are attached with the rod clevis.

Pin for rod eye

Material: Steel

Zinc chromate treatment



Model No.	Bore size (mm)	A	B	C	CD	D	E	Weight (g)	Applicable snap ring
HCM-P-20	20	21	16.2	0.9	8	7.6	1.5	9	C type for shaft 8
HCM-P-25	25/32	25.6	20.2	1.15	10	9.6	1.6	16	C type for shaft 10
HCM-P-40	40	41.6	36.2	1.15	10	9.6	1.6	26	C type for shaft 10
HCM-P-50	50/63	50.6	44.2	1.15	14	13.4	2.1	60	C type for shaft 14

Note : A pin and a snap ring are attached with the rod clevis.

- LCM
- LCR
- LCG
- LCW
- LCX
- STM
- STG
- STS/STL
- STR2
- UCA2
- ULK*
- JSK/M2
- JSG
- JSC3/JSC4
- USSD
- UFCD
- USC
- UB
- JSB3
- LMB
- LML
- HCM**
- HCA**
- LBC
- CAC4
- UCAC2
- CAC-N
- UCAC-N
- RCS2
- RCC2
- PCC
- SHC
- MCP
- GLC
- MFC
- BBS
- RRC
- GRC
- RV3*
- NHS
- HRL
- LN
- Hand
- Chuk
- MechHnd/Chuk
- ShkAbs
- FJ
- FK
- SpdContr
- Ending