



Miniature meter-in meter-out speed controller

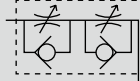
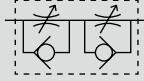
SCD-M3/M5 Series

Compact, lightweight and thin body. Speed control valve for air supply and exhaust.

JIS symbol

● SCD-M*-S
(straight)

● SCD-M*-A
(adjustable)



Specifications

Item	SCD-M3-S	SCD-M3-A	SCD-M5-S	SCD-M5-A	SCD-M5-S-F	SCD-M5-A-F
Working fluid	Compressed air					
Max. working pressure MPa	0.7 (≈100 psi, 7 bar)					
Min. working pressure MPa	0.1 (≈15 psi, 1 bar)					
Proof pressure MPa	1.05 (≈150 psi, 10.5 bar)					
Fluid temperature °C	5 (41°F) to 60 (140°F) (no freezing. *1)					
Ambient temperature °C	0 (32°F) to 60 (140°F) (no freezing)					
Port size	M3×0.5			M5×0.8		
Cylinder bore mm	ø4 to ø8			ø6 to ø25		
Dial value (needle position)	10			14		
Weight g	3.1	3.9	10	11.7	10.8	12.5
Control flow rate ℓ/min(ANR)	13		37		6.7	
Eff. X-sectional area mm ²	0.2		0.55		0.1	

*1: Freezing may occur due to adiabatic expansion depending on the air quality (dew point).

*2: Flow rate is the atmospheric pressure conversion at 0.5 MPa.

How to order

SCD - M3 - S - F

Model No.

A Port size

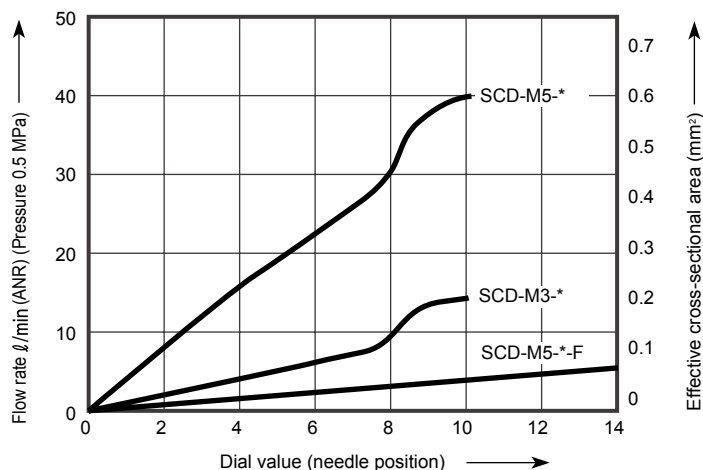
B Shape

C Flow characteristics

Code	Description
A Port size	
M3	M3×0.5
M5	M5×0.8
B Shape	
S	Straight
A	Adjustable
C Flow characteristics	
Blank	Standard
F	Fine speed (M5 only)

*1: For fine speed, the lock nut exterior is blue.

Flow characteristics

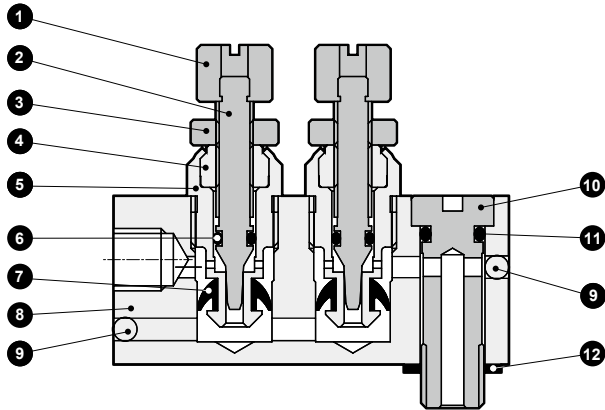


SCD-M3/M5 Series

Internal structure/external dimensions

Internal structure and parts list

● Adjustable



No.	Part name	Material
1	Knob	Aluminum alloy
2	Needle	Stainless steel
3	Lock nut	Aluminum alloy
4	Needle guide	Aluminum alloy (Fine speed is stainless steel)
5	Check bracket	Aluminum alloy
6	O-ring	Nitrile rubber
7	Packing	Hydrogenated nitrile rubber
8	Body	Aluminum alloy
9	Steel ball	Stainless steel
10	Bolt	Copper alloy
11	O-ring	Nitrile rubber
12	Gasket	Steel + nitrile rubber

*1: For the outside of handle, one side is painted with black.
(For adjustable, black indicates meter-in)

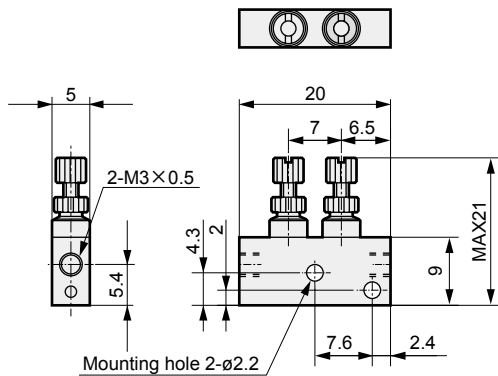
*2: The materials are the same for the straight (without 10 11 12).

*3: Copper alloy parts have electroless nickel plating.

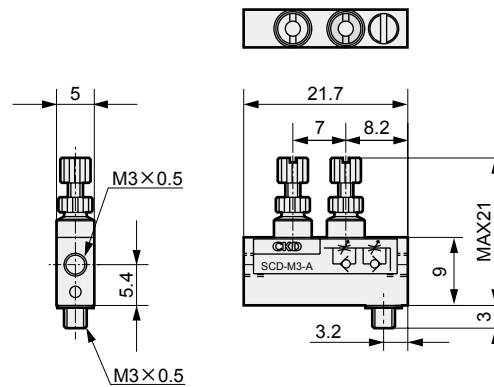
Dimensions



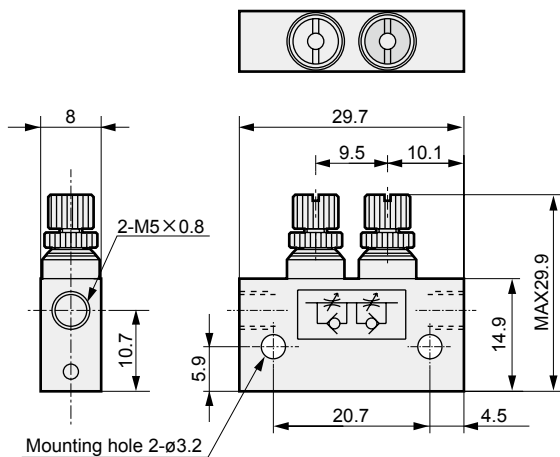
● SCD-M3-S (straight)



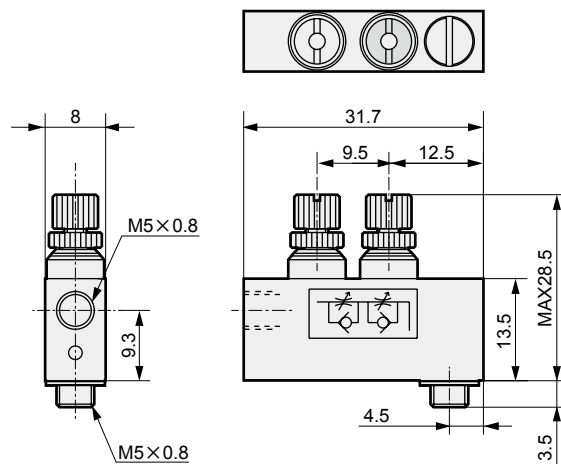
● SCD-M3-A (adjustable)



● SCD-M5-S (straight)



● SCD-M5-A (adjustable)



F.R.L.
F.R.
F (Filtr)
R (Reg)
L (Lub)
Drain Separ
Mech Press SW
Res press exh valve
SlowStart
Anti-bac/Bac-remove Filtr
Film Resist FR
Oil-ProhR
Med Press FR
No Cu/ PTFE FRL
Outdrs FRL
Adapter Joiner Press Gauge
CompFRL
LgFRL
PrecsR
VacF/R
Clean FR
ElecPneuR
AirBoost
Speed Ctrl
Silncr
CheckV/ other
Fit/Tube
Nozzle
Air Unit
PrecsCompn
Electro Press SW
ContactSW
AirSens
PresSW Cool
Air Flo Sens/Ctrl
WaterRISens
TotAirSys (Total Air)
TotAirSys (Gamma)
Gas generator
RefrDry
DesicDry
HiPolymDry
MainFiltr Dischrg etc
Ending