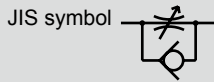


Speed controller Medium bore size Outdoor Series

SC1-W Series

● Port size: Rc1/4 to Rc1/2



Specifications

1 MPa ≈ 145.0 psi, 1 MPa = 10 bar

| Item | SC1-8-W | SC1-10-W | SC1-15-W | |
|------------------------------|--|-------------|-------------|------|
| Working fluid | Compressed air | | | |
| Max. working pressure MPa | 1.0 (≈145 psi, 10 bar) | | | |
| Min. working pressure MPa | 0.05 (≈8 psi, 1 bar) | | | |
| Proof pressure MPa | 1.5 (≈217 psi, 15 bar) | | | |
| Fluid temperature °C | 5 (41°F) to 60 (140°F) | | | |
| Ambient temperature °C | -10 (14°F) to 60 (140°F) (no freezing) | | | |
| Port size Rc | 1/4 | 3/8 | 1/2 | |
| Weight g | 95 | 205 | 195 | |
| Cylinder bore size mm | ø32 to ø75 | ø50 to ø140 | ø80 to ø160 | |
| Dial value (needle position) | 10 | 10 | 10 | |
| Free flow | Flow rate l/min (ANR) | 930 | 2600 | 2900 |
| | Effective cross-sectional area mm ² | 14 | 39 | 43 |
| Controlled flow | Flow rate l/min (ANR) | 870 | 1500 | 2400 |
| | Effective cross-sectional area mm ² | 13 | 22 | 36 |

*1: Flow rate is the atmospheric pressure conversion at 0.5 MPa.

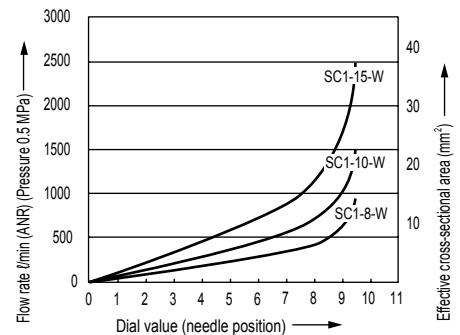
How to order

SC1 - 8 - W

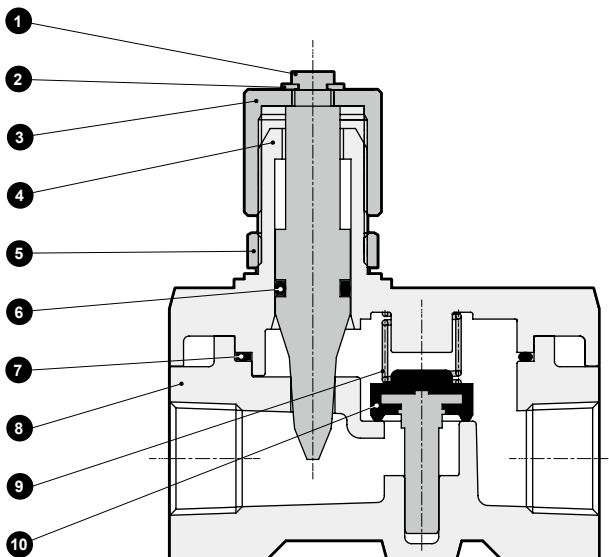
A Port size

| Code | Description |
|--------------------|-------------|
| A Port size | |
| 8 | Rc1/4 |
| 10 | Rc3/8 |
| 15 | Rc1/2 |

Flow characteristics



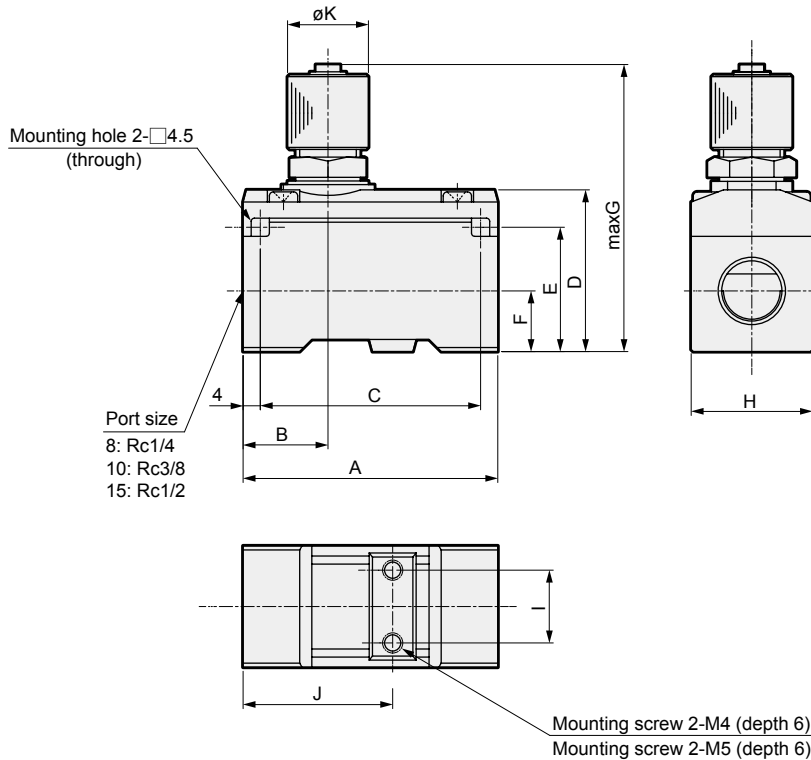
Internal structure and parts list



| No. | Part name | Material |
|-----|------------------|----------------------------|
| 1 | Needle | Stainless steel |
| 2 | E type snap ring | Stainless steel |
| 3 | Knob | Aluminum |
| 4 | Needle guide | Aluminum alloy die-casting |
| 5 | Lock nut | Stainless steel |
| 6 | O-ring | Fluoro rubber |
| 7 | Gasket | Fluoro rubber |
| 8 | Body | Aluminum alloy die-casting |
| 9 | Spring | Stainless steel |
| 10 | Valve seat | Copper alloy/fluoro rubber |

Dimensions

● SC1-W



| Model No. | A | B | C | D | E | F | G | H | I | J | K |
|-------------|----|----|----|----|----|----|----|----|----|----|----|
| SC1-8-W | 50 | 20 | 42 | 31 | 23 | 11 | 67 | 22 | 12 | 31 | 19 |
| SC1-10/15-W | 63 | 21 | 55 | 40 | 31 | 15 | 83 | 30 | 18 | 37 | 23 |

Safety precautions

■ Design/selection

⚠ WARNING

- This product is for industrial use. Do not use for medical purposes, or in any equipment or circuit that concerns human life.

■ Working environment

- This product has outdoor specifications, but should not be used in the following environments.
 - When the ambient temperature and product temperature exceed the range of -10 to 60°C. (The product temperature is at risk of exceeding the ambient temperature when exposed to direct sunlight.)
 - Where air freezes.
 - In atmospheres containing corrosive gases, liquids and chemicals.
 - Locations with vibration or impact.

■ Mounting, installation and adjustment

⚠ CAUTION

- When tightening, do not tighten the needle or lock nut section excessively. (Tightening torque approx. 3 N·m)

■ Use/maintenance

⚠ WARNING

- Do not disassemble.

⚠ CAUTION

- When operating in the low pressure range (0.05 MPa or less), or when the piping, etc., before and after the product is excessively constricted, note that vibrating sounds can be easily generated at fast cylinder speeds or low differential pressure.

■ Working fluids

- Use only compressed air. Air containing corrosive gases, fluids, or chemicals could result in body damage or rubber deterioration.

■ Others

- This product is guaranteed for outdoor use, but not corrosion resistance (no rust or discoloration).

⚠ CAUTION

- Do not apply a load to the product outside the parameters of use. (Do not climb/step onto the product.)

| |
|----------------------------|
| F.R.L. |
| F.R. |
| F (Filtr) |
| R (Reg) |
| L (Lub) |
| Drain Separ |
| Mech Press SW |
| Res press exh valve |
| SlowStart |
| Anti-bac/Bac-remove Filtr |
| Film Resist FR |
| Oil-ProhR |
| Med Press FR |
| No Cu/ PTFE FRL |
| Outdrs FRL |
| Adapter Joiner Press Gauge |
| CompFRL |
| LgFRL |
| PrecsR |
| VacF/R |
| Clean FR |
| ElecPneuR |
| AirBoost |
| Speed Ctrl |
| Silncr |
| CheckV/ other |
| Fit/Tube |
| Nozzle |
| Air Unit |
| PrecsCompn |
| Electro Press SW |
| ContactSW |
| AirSens |
| PresSW Cool |
| Air Flo Sens/Ctrl |
| WaterRISens |
| TotAirSys (Total Air) |
| TotAirSys (Gamma) |
| Gas generator |
| RefrDry |
| DesicDry |
| HiPolymDry |
| MainFiltr |
| Dischrg etc |
| Ending |