

F.R.L.
 F.R.
 F (Filtr)
 R (Reg)
 L (Lub)
 Drain Separ
 Mech Press SW
 Res press exh valve
 SlowStart
 Anti-bac/Bac-remove Filtr
 Film Resist FR
 Oil-Prohr
 Med Press FR
 No Cu/ PTFE FRL
 Outdrs FRL
 Adapter Joiner
 Press Gauge
 CompFRL
 LgFRL
 PrecsR
 VacF/R
 Clean FR
 ElecPneur
 AirBoost
 Speed Ctrl
 Silncr
 CheckV/ other
 Fit/Tube
 Nozzle
 Air Unit
 PrecsCompn
 Electro Press SW
 ContactSW
 AirSens
 PresSW Cool
 Air Flo Sens/Ctrl
 WaterRtSens
 TotAirSys (Total Air)
 TotAirSys (Gamma)
 Gas generator
 RefrDry
 DesicDry
 HiPolymDry
 MainFiltr
 Dischrg etc
 Ending



Miniature speed controller SC-M3/M5

Compact and lightweight enabling space-saving piping. Low speed and fine speed are available.

JIS symbol

SC-M5-S
 SC-M5-F



SC-M5-L
 SC-M5-A



Specifications

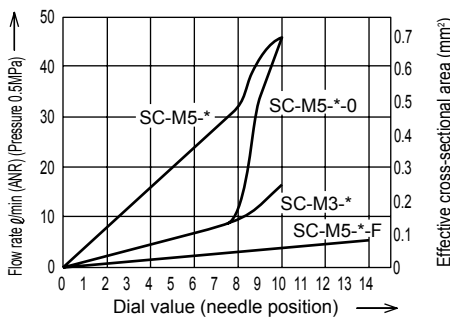
Item	SC-M3-S	SC-M3-L	SC-M3-F	SC-M3-A	SC-M5-S	SC-M5-L	SC-M5-F	SC-M5-A	
Working fluid	Compressed air								
Max. working pressure MPa	0.7 (≈100 psi, 7 bar)								
Min. working pressure MPa	0.1 (≈15 psi, 1 bar)								
Proof pressure MPa	1.05 (≈150 psi, 10.5 bar)								
Fluid temperature °C	5 (41°F) to 60 (140°F) (no freezing) *1								
Ambient temperature °C	0 (32°F) to 60 (140°F) (no freezing)								
Port size	M3				M5				
Weight g	1.7	1.5	2.4	2.4	5.6(6)	4.8(5.2)	7.9(8.3)	8.5(8.9)	
Cylinder bore size mm	ø2.5 to ø10				ø6 to ø25				
Dial value (needle position)	10				10(14)				
Free flow	Flow rate l/min(ANR)	20				53			
	Eff. X-sectional area mm ²	0.3				0.8			
Controlled flow	Flow rate l/min(ANR)	16				47(6.7)			
	Eff. X-sectional area mm ²	0.25				0.7(0.1)			

*1: Freezing may occur due to adiabatic expansion depending on the air quality (dew point).

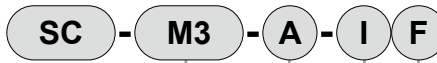
*2: Flow rate is the atmospheric pressure conversion at 0.5 MPa.

*3: Values in () indicate fine speed.

Flow characteristics



How to order



A Port size

B Shape

C Control method

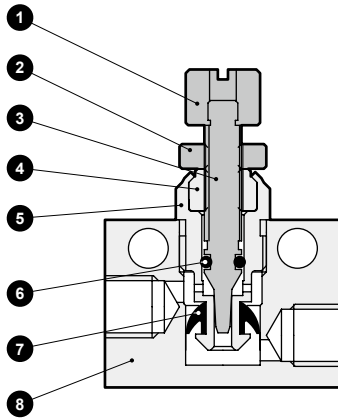
D Flow characteristics

Code	Description
A Port size	
M3	M3×0.5
M5	M5×0.8
B Shape	
S	Straight
L	Elbow
F	Flat
A	Adjustable
C Control method	
Blank	Meter-out
I	Meter-in
D Flow characteristics	
Blank	Standard
O	Low speed (M5 only)
F	Fine speed (M5 only)

*1: For fine speed, the lock nut exterior is blue.

2: Not available for SC--S-I. Install SC-*-S with reverse-mounted IN and OUT.

Internal structure and parts list



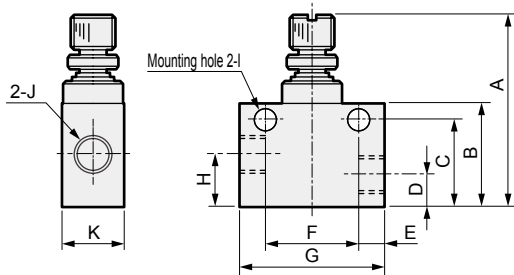
No.	Part name	Material
1	Knob	Aluminum alloy
2	Lock nut	Aluminum alloy
3	Needle	Stainless steel
4	Needle guide	Aluminum alloy
5	Check bracket	Aluminum alloy
6	O-ring	Nitrile rubber
7	Packing	Hydrogenated nitrile rubber
8	Body	Aluminum alloy

Note: For fine speed, the material of the needle guide is stainless steel.

Dimensions

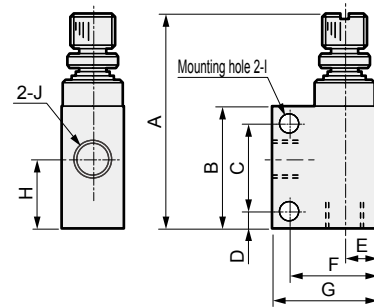


● SC-M3/M5 -S (straight)



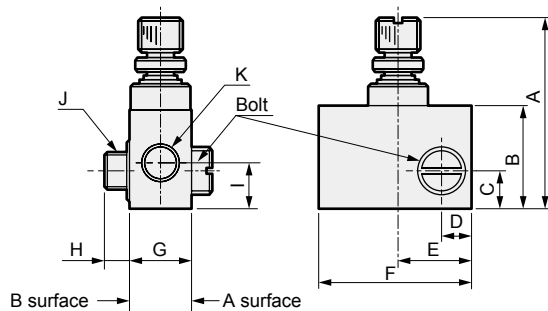
Model No.	A	B	C	D	E	F	G	H	I	J	K
SC-M3-S	18.5(max21)	9	7.3	2.5	2.5	8	13	4.2	∅2.2	M3×0.5	5
SC-M5-S	25(max28.5)	13.5	11.2	4.2	3.5	12	19	6.5	∅3.2	M5×0.8	8

● SC-M3/M5 -L (elbow)



Model No.	A	B	C	D	E	F	G	H	I	J
SC-M3-L	20.3(max22.8)	10.5	7	1.9	2.5	6.5	9	5.7	∅2.2	M3×0.5
SC-M5-L	27.5(max31)	16	11.5	2.2	4.3	11.2	13.5	9	∅3.2	M5×0.8

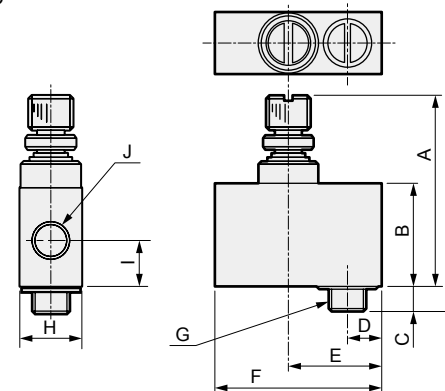
● SC-M3/M5 -F (flat)



Model No.	A	B	C	D	E	F	G	H	I	J	K
SC-M3-F	18.5(max21)	9	3.4	2.7	6.5	13	5	3	4.2	M3×0.5	M3×0.5
SC-M5-F	25(max28.5)	13.5	5.1	4	10.5	20	8	3.5	6.5	M5×0.8	M5×0.8

Note: The bolt can be removed from the main body and installed from either A or B surfaces.

● SC-M3/M5 -A (adjustable)



Model No.	A	B	C	D	E	F	G	H	I	J
SC-M3-A	18.5(max21)	9	3	3.2	8	14.5	M3×0.5	5	4.2	M3×0.5
SC-M5-A	25(max28.5)	13.5	3.5	4.5	12.5	22	M5×0.8	8	6.5	M5×0.8

F.R.L.
F.R.
F (Filtr)
R (Reg)
L (Lub)
Drain Separ
Mech Press SW
Res press exh valve
SlowStart
Anti-bac/Bac-remove Filtr
Film Resist FR
Oil-ProhR
Med Press FR
No Cu/ PTFE FRL
Outdrs FRL
Adapter Joiner Press Gauge
CompFRL
LgFRL
PrecsR
VacF/R
Clean FR
ElecPneuR
AirBoost
Speed Ctrl
Silncr
CheckV/ other
Fit/Tube
Nozzle
Air Unit
PrecsCompn
Electro Press SW
ContactSW
AirSens
PresSW Cool
Air Flo Sens/Ctrl
WaterRISens
TotAirSys (Total Air)
TotAirSys (Gamma)
Gas generator
RefrDry
DesicDry
HiPolymDry
MainFiltr
Dischrg etc
Ending