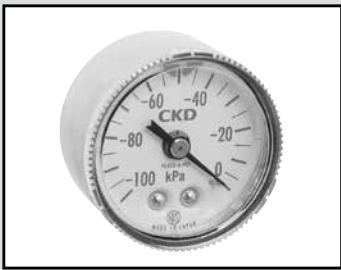


F.R.L.
 F.R.
 F (Filtr)
 R (Reg)
 L (Lub)
 Drain
 Separ
 Mech
 Press SW
 Res press
 exh valve
 SlowStart
 Anti-bac/Bac-
 remove Filtr
 Film
 Resist FR
 Oil-ProhrR
 Med
 Press FR
 No Cu/
 PTFE FRL
 Outdrs FRL
 Adapter
 Joiner
 Press
 Gauge
 CompFRL
 LgFRL
 PrecsR
 VacF/R
 Clean FR
 ElecPneUR
 AirBoost
 Speed Ctrl
 Silncr
 CheckV/
 other
 Fit/Tube
 Nozzle
 Air Unit
 PrecsCompn
 Electro
 Press SW
 ContactSW
 AirSens
 PresSW
 Cool
 Air Flo
 Sens/Ctrl
 WaterRtSens
 TotAirSys
 (Total Air)
 TotAirSys
 (Gamma)
 Gas
 generator
 RefrDry
 DesicDry
 HiPolymDry
 MainFiltr
 Dischrg
 etc
 Ending



Vacuum pressure gauge with limit marker

VG41D Series

Visual inspection management of vacuum pressure is easy thanks to the green arrow.

● Port size: R1/8



Specifications

| Item | VG41D | |
|------------------------------------|--|---------------------|
| Working fluid | Compressed air | |
| Fluid temperature °C | 5 (41°F) to 50 (122°F) | |
| Ambient temperature °C | 5 (41°F) to 50 (122°F) | |
| Accu. *1 Class | JIS2.5 or equivalent (±2.5%F·S) | |
| Shape | DT type (rear side screw/stock section square) | |
| Display size | ø42 | |
| Material | Stock/Bourdon tube | Copper alloy |
| | Housing | Stainless steel |
| | Lens | Polycarbonate resin |
| | Marker | Acetal resin |
| Pressure range (Setting range) kPa | -100 (≈-15 psi, -1 bar) to 0 (≈0 psi, 0 bar) | |
| Port size | R1/8 | |
| Weight g | 82 | |

*1: The guaranteed indicator accuracy temperature is 20±15°C.

How to order

VG41D - 6 - P01

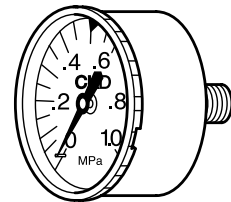
| Code | Description |
|---------------------------|----------------------------------|
| A Model No. | |
| VG41D | Pressure gauge with limit marker |
| B Port size *1 | |
| 6 | R 1/8 |
| C Pressure display | |
| P01 | -100 to 0 kPa |

⚠ Precautions for model No. selection

*1: NPT screws are available as made to order.

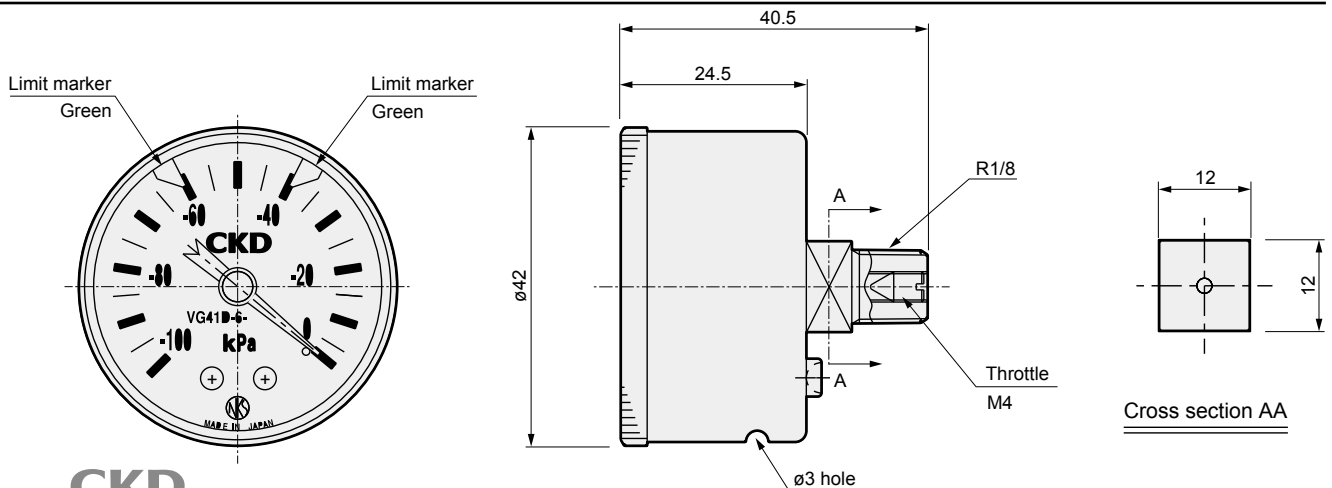
Adjustment

Remove the transparent case, then move the green arrow marker with a screwdriver, etc. After adjustment, always reattach the transparent face before supplying pneumatic pressure.



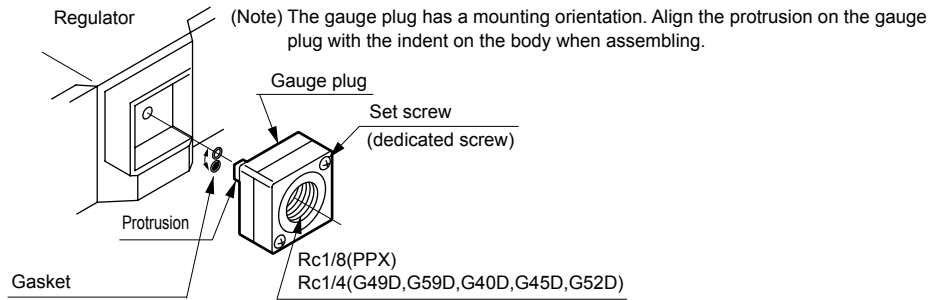
Remove the transparent case by turning it counterclockwise and pulling it off.

Dimensions



Gauge plug assembly (assembly of gauge plug, gasket and mounting screw)

Use when mounting the pressure gauge.



If the gasket is turned 180° as shown in the figure, the regulator pressure flows to the pressure gauge.

- * Tighten the pressure gauge with a torque of 10 to 15 N·m or less.
- * Use when detecting external pressures as well.
- * Consult with CKD when NPT or G threads are required.

| Gauge plug assembly model No. | Port size | Compatible model | Compatible pressure gauge |
|-------------------------------|-----------|---|------------------------------|
| R1000-W-G-PLUG | Rc1/4 | For 1000-W Series | G49D, G59D, G40D, G45D, G52D |
| R1000-W-T6-PLUG | Rc1/8 | | PPX (Rc1/8 only) |
| R3000-W-G-PLUG | Rc1/4 | For 2000-W, 3000-W, 4000-W, 6000-W, 8000-W Series | G49D, G59D, G40D, G45D, G52D |
| R3000-W-T6-PLUG | Rc1/8 | | PPX (Rc1/8 only) |

- F.R.L.
- F.R.
- F (Filtr)
- R (Reg)
- L (Lub)
- Drain Separ
- Mech Press SW
- Res press exh valve
- SlowStart
- Anti-bac/Bac-remove Filtr
- Film Resist FR
- Oil-ProhR
- Med Press FR
- No Cu/ PTFE FRL
- Outdrs FRL
- Adapter Joiner
- Press Gauge
- CompFRL
- LgFRL
- PrecsR
- VacF/R
- Clean FR
- ElecPneuR
- AirBoost
- Speed Ctrl
- Silncr
- CheckV/ other
- Fit/Tube
- Nozzle
- Air Unit
- PrescsCompn
- Electro Press SW
- ContactSW
- AirSens
- PresSW Cool
- Air Flo Sens/Ctrl
- WaterRISens
- TotAirSys (Total Air)
- TotAirSys (Gamma)
- Gas generator
- RefrDry
- DesicDry
- HiPolymDry
- MainFiltr
- Dischrg etc
- Ending