

F.R.L.
 F.R.
 F (Filtr)
 R (Reg)
 L (Lub)
 Drain Separ
 Mech Press SW
 Res press exh valve
 SlowStart
 Anti-bac/Bac-remove Filt
 Film Resist FR
 Oil-ProhR
 Med Press FR
 No Cu/PTFE FRL
 Outdrs FRL
 Adapter Joiner
 Press Gauge
 CompFRL
 LgFRL
 PrecsR
 VacF/R
 Clean FR
 ElecPneur
 AirBoost
 Speed Ctrl
 Silncr
 CheckV/other
 Fit/Tube
 Nozzle
 Air Unit
 PrecsCompn
 Electro Press SW
 ContactSW
 AirSens
 PresSW Cool
 Air Flo Sens/Ctrl
 WaterRISens
 TotAirSys (Total Air)
 TotAirSys (Gamma)
 Gas generator
 RefrDry
 DesicDry
 HiPolymDry
 MainFiltr
 Dischrg etc
 Ending



Pressure gauge for panel mounting

G53D Series

JIS symbol



Features

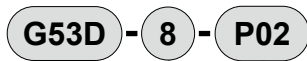
- A flush panel mount has been added to the conventional pressure gauge.
- M5 female screws are used as standard for the port size.

Specifications

Model No.		G53D	
Working fluid		Compressed air	
Fluid temperature		°C	5 (41°F) to 60 (140°F)
Ambient temperature		°C	-5 (23°F) to 60 (140°F) (no freezing)
Accuracy		*1	Full scale ±3%
Shape		DT type (rear side screw, stock section square)	
Display size		ø52	
Material	Stock/Bourdon tube	Copper alloy	
	Housing	Steel plate + chrome plating	
	Lens	Glass	
Pressure range	MPa	0 (≈0 psi, 0 bar) to 0.2 (≈29 psi, 2 bar)	
		0 (≈0 psi, 0 bar) to 0.4 (≈58 psi, 4 bar)	
		0 (≈0 psi, 0 bar) to 1.0 (≈150 psi, 10 bar)	
Port size	R	1/8 (with M5 female thread), 1/4 (with M5 female thread)	
Weight	g	100	

*1: The guaranteed indicator accuracy temperature is 20±15°C.

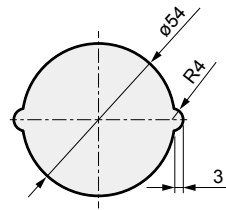
How to order



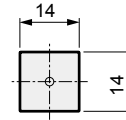
Code	Description
A Port size *1	
6	1/8 (with M5 female thread)
8	1/4 (with M5 female thread)
B Pressure display MPa *2	
P02	0 to 0.2
P04	0 to 0.4
P10	0 to 1.0

⚠ Precautions for model No. selection

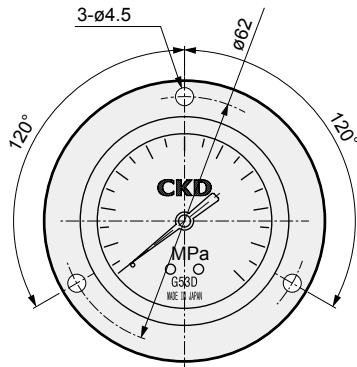
- *1: Contact CKD when ordering NPT thread.
- *2: Contact CKD for indications other than MPa.



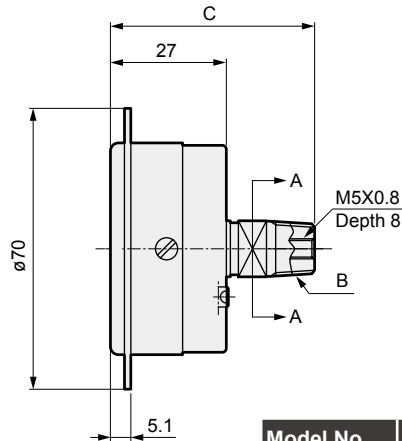
Panel cut dimension



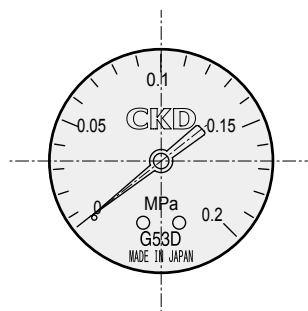
Cross-section A-A



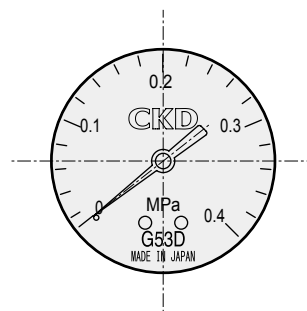
Scale display



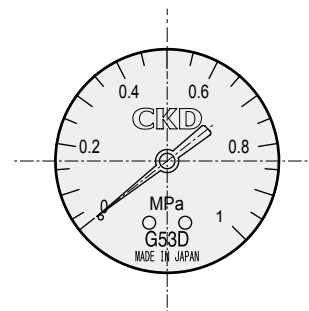
Model No.	B	C
G53D-6	Rc1/8	47
G53D-8	Rc1/4	50



Pressure display: P02



Pressure display: P04



Pressure display: P10

Safety precautions

- Make sure that impact and vibration are not applied directly onto the body.
- Repeated and sudden increases or decreases in pressure and pressure pulsations must be avoided as they could adversely affect the life of the pressure gauge. Ease the pressure fluctuation in the circuit.

- F.R.L.
- F.R.
- F (Filtr)
- R (Reg)
- L (Lub)
- Drain Separ
- Mech Press SW
- Res press exh valve
- SlowStart
- Anti-bac/Bac-remove Filtr
- Film Resist FR
- Oil-ProhR
- Med Press FR
- No Cu/ PTFE FRL
- Outdrs FRL
- Adapter Joiner
- Press Gauge**
- CompFRL
- LgFRL
- PrescR
- VacF/R
- Clean FR
- ElecPneuR
- AirBoost
- Speed Ctrl
- Silncr
- CheckV/ other
- Fit/Tube
- Nozzle
- Air Unit
- PrescCompn
- Electro Press SW
- ContactSW
- AirSens
- PresSW Cool
- Air Flo Sens/Ctrl
- WaterRISens
- TotAirSys (Total Air)
- TotAirSys (Gamma)
- Gas generator
- RefrDry
- DesicDry
- HiPolymDry
- MainFiltr
- Dischrg etc
- Ending