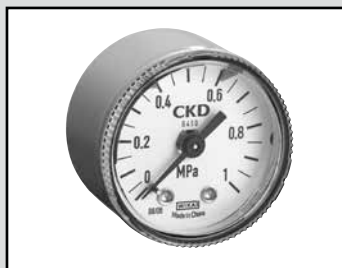


F.R.L.
F.R.
F (Filtr)
R (Reg)
L (Lub)
Drain
Separ
Mech
Press SW
Res press
exh valve
SlowStart
Anti-bac/Bac-
remove Filtr
Film
Resist FR
Oil-ProhrR
Med
Press FR
No Cu/
PTFE FRL
Outdrs FRL
Adapter
Joiner
Press
Gauge
CompFRL
LgFRL
PrecsR
VacF/R
Clean FR
ElecPneur
AirBoost
Speed Ctrl
Silncr
CheckV/
other
Fit/Tube
Nozzle
Air Unit
PrecsCompn
Electro
Press SW
ContactSW
AirSens
PresSW
Cool
Air Flo
Sens/Ctrl
WaterRtSens
TotAirSys
(Total Air)
TotAirSys
(Gamma)
Gas
generator
RefrDry
DesicDry
HiPolymDry
MainFiltr
Dischrg
etc
Ending



Pressure gauge with limit marker

G45D Series

Easy visual inspection management thanks to the green arrow.

● Port size: R1/8, R1/4

JIS symbol



Specifications

Item	G45D	
Working fluid	Compressed air	
Fluid temperature °C	5 (41°F) to 60 (140°F)	
Ambient temperature °C	5 (41°F) to 60 (140°F)	
Accuracy *1	JIS2.5 grade or equivalent	
Shape	DT type (rear side screw/stock section square)	
Display size	ø39	
Material	Stock/Bourdon tube	Copper alloy
	Housing	Steel plate + paint (white)
	Lens	Polyamide resin
	Marker	Polyacetal resin
Pressure range MPa (Setting range)	0 (≈0 psi, 0 bar) to 0.2 (≈29 psi, 2 bar) 0 (≈0 psi, 0 bar) to 0.4 (≈58 psi, 4 bar) 0 (≈0 psi, 0 bar) to 1.0 (≈150 psi, 10 bar)	
Port size	R1/8, 1/4	
Weight	g 74	

*1: The guaranteed indicator accuracy temperature is 20±15°C.

How to order

G45D - 6 - P04

A Model No.

B Port size

C Pressure display

⚠ Precautions for model No. selection

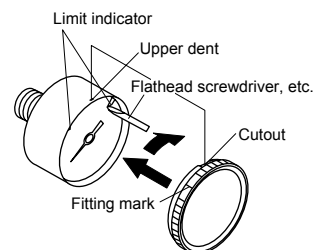
*1: NPT screws are available as made to order.

Code	Description
A Model No.	
G45D	Pressure gauge with limit marker
B Port size *1	
6	R1/8
8	R1/4
C Pressure display	
P02	0 to 0.2 MPa
P04	0 to 0.4 MPa
P10	0 to 1.0 MPa

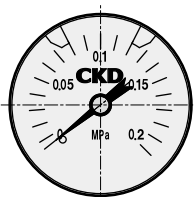
Adjustment

Turn the transparent face counterclockwise and pull it off forward.

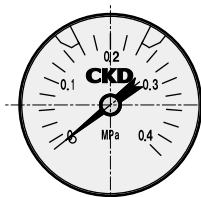
Set the limit marker by moving the green arrow marker with a flathead screwdriver. After adjustment, always reattach the transparent face before supplying pneumatic pressure. When setting the limit marker, take care not to bend the other indicators or to scratch the dial plate. The limit markers do not exactly coincide with each other. A clearance of approx. one gradient may form.



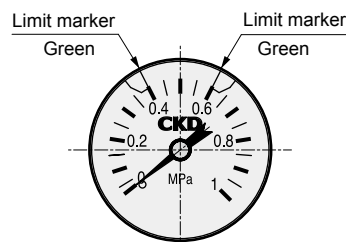
Dimensions



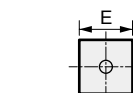
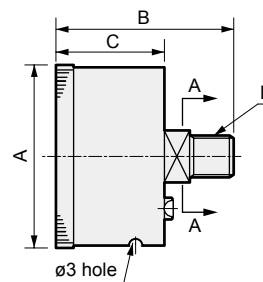
Pressure display: P02



Pressure display: P04



Pressure display: P10



Cross section A-A

Model No.	A	B	C	D	E
G45D-6	ø39	41.5	26	R1/8	14
G45D-8	ø39	44.5	26	R1/4	14