



Mechanical hand

# BHA-FC Series

● Operating stroke length: 5, 9, 11, 15, 20 mm



## Specifications

Model No.	BHA-FC				
Size	01CS	03CS	04CS	05CS	06CS
Cylinder bore size mm	ø12	ø16	ø20	ø25	ø32
Rod diameter mm	ø6	ø8	ø10	ø12	ø16
Ambient temperature °C	5 (41°F) to 60 (140°F)				
Operating stroke length mm	5	9	11	15	20
Repeatability mm	±0.01				
Open side external force N	60 to 90	120 to 180	185 to 280	230 to 350	400 to 600
Gripping power (*3) N	12 to 19	20 to 37	20 to 55	45 to 75	70 to 100
Product weight g	142	212	362	594	1342

## How to order

**BHA** - **01CS** - **FC**

Code	
<b>A Size</b>	
<b>01CS</b>	
<b>03CS</b>	
<b>04CS</b>	
<b>05CS</b>	
<b>06CS</b>	

\*1 : Never use in the open direction, as the hand may be damaged.

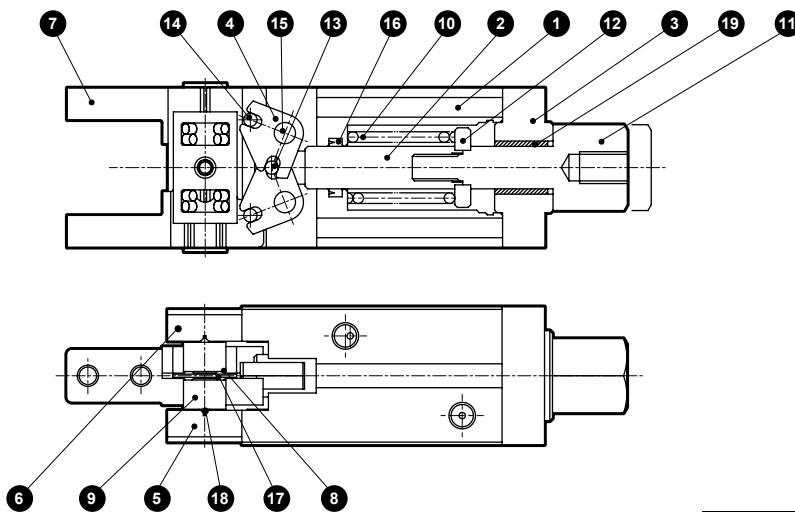
\*2 : The internal piston, etc. may be damaged when torque is applied to the stopper rod.

When connecting with the device, be sure to connect by securing the stopper rod with a wrench.

\*3 : Gripping power varies with stroke position.

## Internal structure and parts list

● BHA-FC



**Cannot be disassembled**

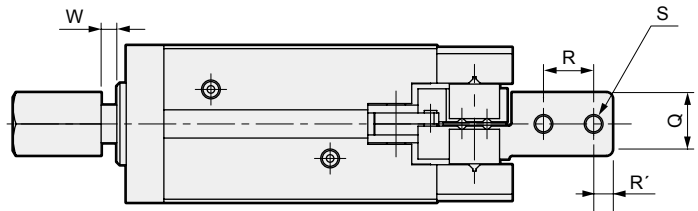
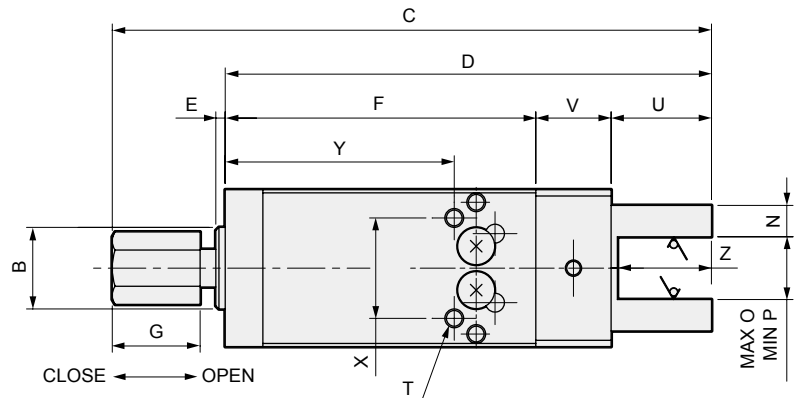
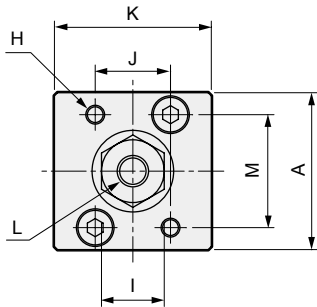
No.	Part name	Material	No.	Part name	Material
1	Body		11	FC stopper rod	Stainless steel
2	FC piston rod	Stainless steel	12	FC washer	Stainless steel
3	FC cylinder guard	Aluminum alloy	13	Fulcrum axis	Steel
4	Arm	Stainless steel	14	Operation shaft A	Alloy steel
5	Bearing guide A	Steel	15	Operation shaft B	Alloy steel
6	Bearing guide B	Steel	16	Lot sealant	Nitrile rubber
7	Finger	Steel	17	Cross roller A	Alloy steel
8	Retainer A	Stainless steel	18	Cross roller B	Alloy steel
9	Retainer B	Stainless steel	19	Bush	Oil impregnated bearing alloy
10	Spring	Stainless steel			

LCM  
LCR  
LCG  
LCW  
LCX  
STM  
STG  
STS/STL  
STR2  
UCA2  
ULK\*  
JSK/M2  
JSG  
JSC3/JSC4  
USSD  
UFCD  
USC  
UB  
JSB3  
LMB  
LML  
HCM  
HCA  
LBC  
CAC4  
UCAC2  
CAC-N  
UCAC-N  
RCS2  
RCC2  
PCC  
SHC  
MCP  
GLC  
MFC  
BBS  
RRC  
GRC  
RV3\*  
NHS  
HRL  
LN  
Hand  
Chuk  
MecHnd/Chuk  
ShkAbs  
FJ  
FK  
SpdContr  
Ending  
BHA-FC  
CKL2-FC

### Dimensions



● BHA-FC



Code	A	B	C	D	E	F	G	H	I	J	K	L	M
<b>Model No.</b>													
BHA-01CS-FC	25	∅13	MAX95.5/MIN93	77.5	1.5	49.5	14	2-M3 × 0.5 depth 6	10	12	25	M5 × 0.8 depth 8	18
BHA-03CS-FC	30	∅17	MAX110/MIN105.5	90	1.5	57	14	2-M4 × 0.7 depth 8	14	15	26	M6 × 1.0 depth 9	22
BHA-04CS-FC	41	∅21	MAX120/MIN114.5	99	1.5	67	14	2-M5 × 0.8 depth 8	17	18	30	M8 × 1.25 depth 10	32
BHA-05CS-FC	50	∅26	MAX148/MIN140.5	123	1.5	88	16	2-M6 × 1.0 depth 12	19	22	35	M8 × 1.25 depth 12	40
BHA-06CS-FC	60	∅34	MAX199/MIN189	171	2	114	16	2-M6 × 1.0 depth 12	24	32	47	M10 × 1.5 depth 15	44

Code	N	O	P	Q	R	S	T	U	V	W	X	Y	Z	R'
<b>Model No.</b>														
BHA-01CS-FC	5	15	10	10 <sup>-0.05</sup>	8	2×2-M3×0.5	2 x 2-M3 x 0.5 depth 7	16	12	2.5	16	36.5	15	3
BHA-03CS-FC	6	18	9	10 <sup>-0.05</sup>	10	2×2-M4×0.7	2 x 2-M4 x 0.7 depth 7	19	14	4.5	24	43	18	4
BHA-04CS-FC	8	25	14	10 <sup>-0.05</sup>	10	2×2-M4×0.7	2 x 2-M5 x 0.8 depth 8	19	13	5.5	30	46	18	4
BHA-05CS-FC	10	30	15	10 <sup>-0.05</sup>	10	2×2-M5×0.8	2 x 2-M6 x 1.0 depth 10	22	13	7.5	36	61	21	5
BHA-06CS-FC	10	40	20	16 <sup>-0.05</sup>	18	2×2-M5×0.8	2 x 2-M8 x 1.25 depth 14	36	21	10	44	77	33	5

LCM
LCR
LCG
LCW
LCX
STM
STG
STS/STL
STR2
UCA2
ULK*
JSK/M2
JSG
JSC3/JSC4
USSD
UFCD
USC
UB
JSB3
LMB
LML
HCM
HCA
LBC
CAC4
UCAC2
CAC-N
UCAC-N
RCS2
RCC2
PCC
SHC
MCP
GLC
MFC
BBS
RRC
GRC
RV3*
NHS
HRL
LN
Hand
Chuk
MechHnd/Chuk
ShkAbs
FJ
FK
SpdContr
Ending
BHA-FC
CKL2-FC