



Check valve (for liquids)

CCH Series

● Working pressure: 0.05 to 7.0 MPa



- EXA
- FWD
- HNB/G
- USB/G
- FAB/G
- FGB/G
- FVB
- FWB/G
- FHB
- FLB
- AB
- AG
- AP/AD
- APK/ADK
- DryAir
- EX-XPLNprf
- XPLNprf
- HVB/HVL
- S◇B/NAB
- LAD/NAD
- Water-Rela
- NP/NAP/NVP
- SNP
- CHB/G
- MXB/G
- Other valves
- SWD/MWD
- DustColl
- CVE/CVSE
- CCH/CPE/D**
- LifeSci
- Gas-Combus
- Auto-Water
- Outdoor
- SpecFld
- Custom
- Ending

JIS symbol



Specifications

Item	CCH-10	CCH-15	CCH-20
Working fluid	Coolant/water/other non-corrosive liquids (*1)		
Fluid viscosity mm ² /s	500 or less		
Max. working pressure MPa	7.0 (≈1000 psi, 70 bar)		
Proof pressure (water pressure) MPa	14.0 (≈2000 psi, 140 bar)		
Fluid temperature °C	-10 (14°F) to 60 (140°F) (no freezing)		
Ambient temperature °C	-10 (14°F) to 60 (140°F)		
Cracking pressure kPa	6 (≈870 psi, 60 bar) (reference value) (*2)		
Valve seat leakage cm ³ /min	1.0 or less (water pressure)		
Port size	Rc3/8	Rc1/2	Rc3/4
Cv	3.6	6.9	11.0
Weight kg	0.27	0.44	0.88
Mounting orientation	Unrestricted		

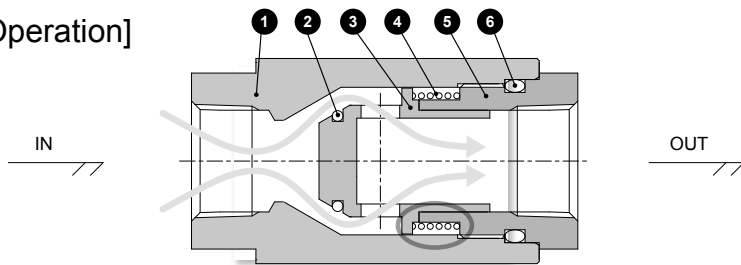
*1 : Liquids that do not affect stainless steel, chrome plating, or fluoro rubber

*2 : Cracking pressure shows the pressure permitting a 5 mL/min (air) flow rate.

The value may increase depending on the type and viscosity of the liquid.

When the valve is used for the first time after being unused for a long time, the initial cracking pressure may be higher than normal.

[Operation]



The spring and main valving element are not in the flow path while the coolant is passing, and thus problems due to catching foreign matters and clogging are minimized.

How to order

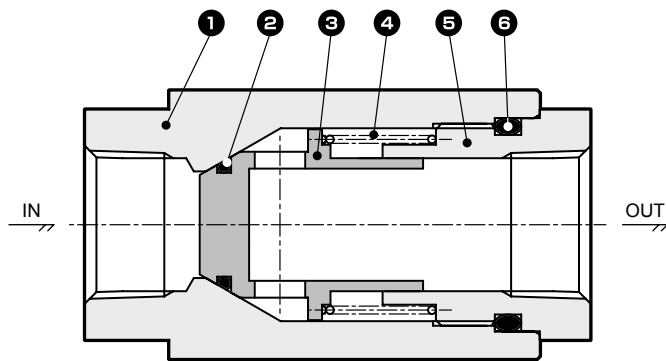
CCH - **10** **A**

A Port size

B Thread

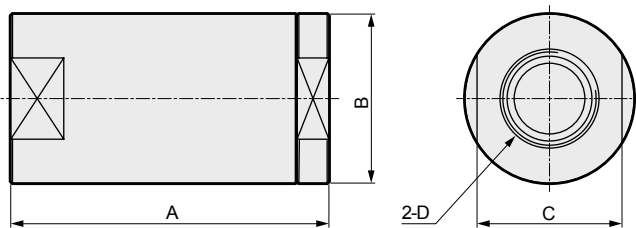
A Port size	
10	3/8
15	1/2
20	3/4
B Thread	
A	Rc thread
G	G thread
N	NPT thread

Internal structure and parts list



No.	Part name	Material	
1	Body	SUS303	Stainless steel
2	O-ring	FKM	Fluoro rubber
3	Main valving element	SUS303	Stainless steel (chrome plating)
4	Spring	SUS304	Stainless steel
5	Cap	SUS303	Stainless steel
6	O-ring	FKM	Fluoro rubber

Dimensions



Model No.	A	B	C	D
CCH-10A/G/N	62	ø32	27	Rc3/8 / G3/8 / 3/8NPT
CCH-15A/G/N	75	ø38	34	Rc1/2 / G1/2 / 1/2NPT
CCH-20A/G/N	90	ø48	41	Rc3/4 / G3/4 / 3/4NPT

EXA
FWD
HNB/G
USB/G
FAB/G
FGB/G
FVB
FWB/G
FHB
FLB
AB
AG
AP/ AD
APK/ ADK
DryAir
EX- XPLNprf
XPLNprf
HVB/ HVL
S ⌀ B/ NAB
LAD/ NAD
Water- Rela
NP/NAP/ NVP
SNP
CHB/G
MXB/G
Other valves
SWD/ MWD
DustColl
CVE/ CVSE
CCH/ CPE/D
LifeSci
Gas- Combus
Auto- Water
Outdoor
SpecFld
Custom
Ending