

F.R.L.
F.R.
F (Filtr)
R (Reg)
L (Lub)
Drain Separ
Mech
Press SW
Res press exh valve
SlowStart
Anti-bac/Bac-remove Filtr
Film Resist FR
Oil-Prohr
Med Press FR
No Cu/ PTFE FRL
Outdrs FRL
Adapter Joiner Press Gauge
CompFRL
LgFRL
PrecsR
VacF/R
Clean FR
ElecPneR
AirBoost
Speed Ctrl
Silncr
CheckV/ other
Fit/Tube
Nozzle
Air Unit
PrecsCompn
Electro Press SW
ContactSW
AirSens
PresSW Cool
Air Flo Sens/Ctrl
WaterRtSens
TotAirSys (Total Air)
TotAirSys (Gamma)
Gas generator
RefrDry
DesicDry
HiPolymDry
MainFiltr
Dischrg etc
Ending

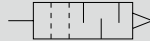


Exhaust cleaner FA Series

Exhaust noise and oil mist have been minimized.

● Port size: Rc3/8 to Rc2

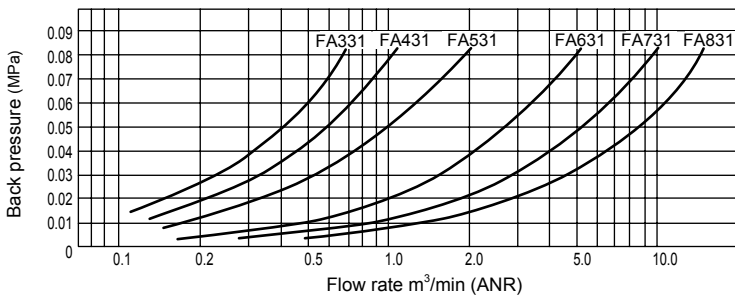
JIS symbol



Specifications

Item	FA331-10A	FA431-15A	FA531-20A	FA631-25A	FA731-40A	FA831-50A
Port size Rc	3/8	1/2	3/4	1	1 1/2	2
Effective cross-sectional area mm ²	16	33	55	165	330	550
Max. processing flow rate m ³ /min(ANR)	0.3	0.6	1	3	6	10
Fluid temperature	5 (41°F) to 65 (149°F)°C (no freezing)					
Ambient temperature	0 (32°F) to 65 (149°F)°C (no freezing)					
Noise reduction effect	35 dB and over (at the max. processing flow rate in oil saturated state)					
Oil mist collection efficiency	99.9% and over					
Oil storage capacity cm ³	80	130	150	250	350	550
Weight kg	0.2	0.3	0.4	0.6	1.1	1.5
Bracket No. (option)	B351-10A	B451-15A	B551-20A	B651-25A	-	-

Flow characteristics

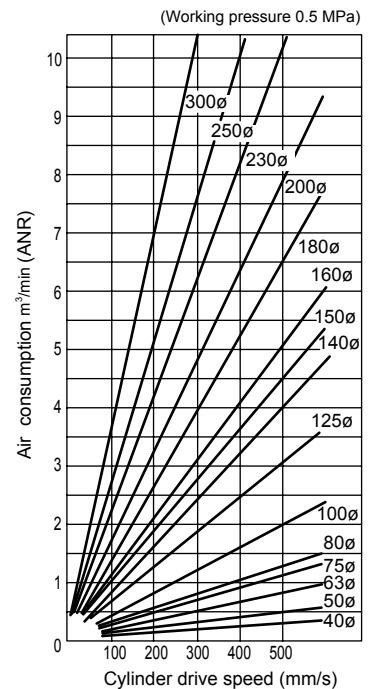


Selection guide

Select an exhaust cleaner based on the air consumption in the circuit being used.

- (1) Calculate the air consumption for the actuator being used.
- (2) Multiply the calculated air consumption by 1.4.
- (3) Select a model that has a processing flow rate exceeding the air consumption multiplied by 1.4.

The figure below shows the air consumption when multiplied by 1.4 for each air cylinder size. Use this graph to select a model.



How to order

FA **3** **31** - **10A** - **B**

A Series code

B Port size
*1

C Option
*2

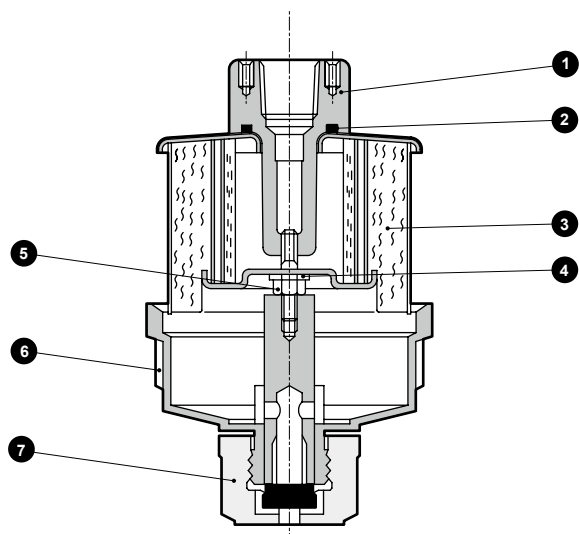
Code	Description
A Series code	
3	Compact
4	Standard
5	Large
6	Large
7	Large bore size
8	Large bore size
B Port size	
	Series 3 4 5 6 7 8
10A	Rc3/8 ●
15A	Rc1/2 ●
20A	Rc3/4 ●
25A	Rc1 ●
40A	Rc1 1/2 ●
50A	Rc2 ●
C Option	
Blank	Not included ● ● ● ● ● ●
B	Bracket ● ● ● ●

⚠ Precautions for model No. selection

*1: If port size NPT thread is required, do not indicate nominal size A. (Example) FA431-15

*2: Bracket option is not available for FA731 and FA831.

Internal structure and parts list



No.	Part name	Material				
		FA331	FA431	FA531	FA631	FA731
1	Adaptor assembly	Aluminum alloy die-casting, steel			Aluminum alloy casting, steel	
2	O-ring	Nitrile rubber				
3	Element assembly	Aluminum alloy, steel, glass fiber				
4	Gasket	Polyacetal resin				
5	Nut	Steel				
6	Case assembly	Polycarbonate resin, aluminum alloy				
7	Drain cock assembly	Nitrile rubber, polyamide resin				

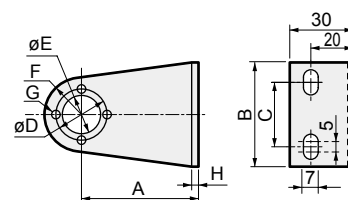
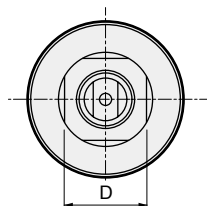
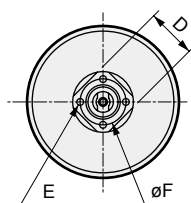
Dimensions



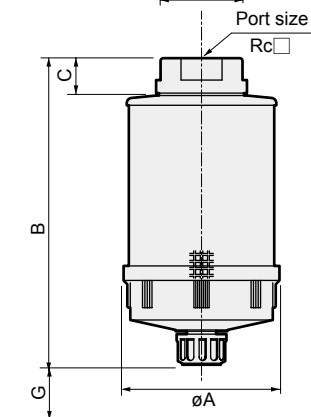
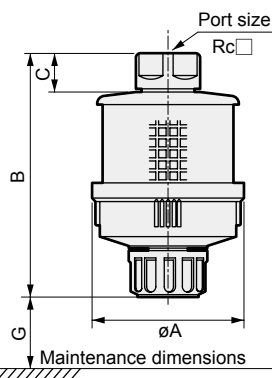
● FA331 to FA631

● FA731 to FA831

● Bracket (option)



Note) Four screws for mounting the body are attached.

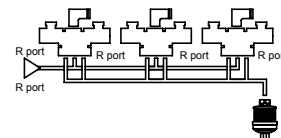


Model No.	A	B	C	D	E	F	G	H	Wt. kg
B351-10A	55	50	30	24	ø18	R16.5	4-ø3.5	2.3t	0.07
B451-15A	60	60	40	32	ø23	R20	4-ø4.5	2.3t	0.09
B551-20A	70	70	40	40	ø29	R25.4	4-ø4.5	3.2t	0.16
B651-25A	80	70	40	48	ø37	R27.5	4-ø4.5	3.2t	0.18

Common piping method

When many valves are used in one place, common piping method is recommended.

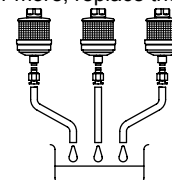
- Easy maintenance control
- Low cost



Model No.	FA331	FA431	FA531	FA631	FA731	FA831
A	80	90	100	112	132	150
B	129	147	171	201	258	311
C	20	23	25	28	32	36
D	27	32	41	46	70	80
E	4-M3 (depth 7)	4-M4 (depth 8)	4-M4 (depth 8)	4-M4 (depth 10)	-	-
F	24	32	40	48	-	-
G	80	100	100	100	200	250
Port size	Rc ³ / ₈	Rc ¹ / ₂	Rc ³ / ₄	Rc1	Rc1 ¹ / ₂	Rc2

⚠ Safety precautions

- 1 Drain the oil accumulated inside the case by opening the drain cock before the oil level reaches the element.
- 2 To connect a drain tube to the case, follow the following steps.
 - (1) Remove the drain cock.
 - (2) Screw in the R 1/8 male half union and connect the resin tube.
 - (3) Hold the adaptor assembly and screw in, taking care not to apply load to the case.
 - (4) If the back pressure increases to 0.1 MPa or more, replace the element assembly.

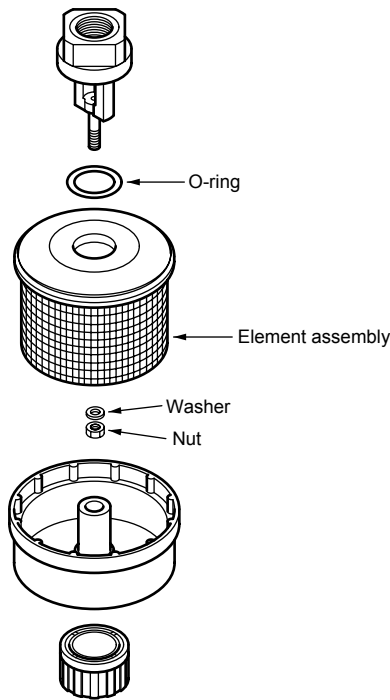


F.R.L.
F.R.
F (Filtr)
R (Reg)
L (Lub)
Drain Separ
Mech Press SW
Res press exh valve
SlowStart
Anti-bac/Bac-remove Filtr
Film Resist FR
Oil-ProhR
Med Press FR
No Cu/ PTFE FRL
Outdrs FRL
Adapter Joiner
Press Gauge
CompFRL
LgFRL
PrecsR
VacF/R
Clean FR
ElecPneuR
AirBoost
Speed Ctrl
Silncr
CheckV/ other
Fit/Tube
Nozzle
Air Unit
PresCompn
Electro Press SW
ContactSW
AirSens
PresSW Cool
Air Flo Sens/Ctrl
WaterRISens
TotAirSys (Total Air)
TotAirSys (Gamma)
Gas generator
RefrDry
DesicDry
HiPolymDry
MainFiltr
Dischrg etc
Ending

Exhaust cleaner optional parts diagram

F.R.L. Exhaust cleaner optional parts diagram

- F (Filtr)
- R (Reg)
- L (Lub)
- Drain Separ
- Mech Press SW
- Res press exh valve
- SlowStart
- Anti-bac/Bac-remove Filtr
- Film Resist FR
- Oil-ProhR
- Med Press FR
- No Cu/PTFE FRL
- Outdrs FRL
- Adapter Joiner
- Press Gauge
- CompFRL
- LgFRL
- PrecsR
- VacF/R
- Clean FR
- ElecPneuR
- AirBoost
- Speed Ctrl
- Silncr
- CheckV/other
- Fit/Tube
- Nozzle
- Air Unit
- PrecsCompn
- Electro Press SW
- ContactSW
- AirSens
- PresSW Cool
- Air Flo Sens/Ctrl
- WaterRtSens
- TotAirSys (Total Air)
- TotAirSys (Gamma)
- Gas generator
- RefrDry
- DesicDry
- HiPolymDry
- MainFiltr
- Dischrg etc
- Ending



Element kit (Element assembly, O-ring, washer and nut set)

Model	Element kit model No.
FA331-10A	FA331-ELEMENT
FA431-15A	FA431-ELEMENT
FA531-20A	FA531-ELEMENT
FA631-25A	FA631-ELEMENT
FA731-40A	FA731-ELEMENT
FA831-50A	FA831-ELEMENT