

# GWJ


## Fitting (small size)

Port size M3 to 1/8 (Rc or R)



### ● Small push-in fittings suitable for various applications

Space saving with smaller body. Dead space of pipe can be decreased dramatically.

■ Straight				
Single straight/ GWJS□-□	Female straight/ GWJS3-□-M	Bulkhead/ GWJS3-0-X	Straight/ GWJS3-0	
				
Compatible Tube O.D. ø 3.2 4 6	Compatible Tube O.D. ø 3.2	Compatible Tube O.D. ø 3.2	Compatible Tube O.D. ø 3.2	Compatible Tube O.D. ø 3.2
·Refer to page: 840	·Refer to page: 840	·Refer to page: 840	·Refer to page: 840	
■ Elbow				
Different diameter straight/ GWJS□-0	Single elbow/ GWJL□-□	Long elbow/ GWJL□-□-L	Elbow/ GWJL3-0	
				
Compatible Tube O.D. ø 3.2, 4 3.2, 6	Compatible Tube O.D. ø 3.2 4 6	Compatible Tube O.D. ø 3.2 4 6	Compatible Tube O.D. ø 3.2	Compatible Tube O.D. ø 3.2
·Refer to page: 840	·Refer to page: 840	·Refer to page: 841	·Refer to page: 841	
■ Tee				
Double tee/ GWJT3-□	D tee/ GWJT3-□-D	Tee/ GWJT3-0	Y tee/ GWJY□-0	
				
Compatible Tube O.D. ø 3.2	Compatible Tube O.D. ø 3.2	Compatible Tube O.D. ø 3.2	Compatible Tube O.D. ø 3.2, 3.2 3.2, 4	
·Refer to page: 841	·Refer to page: 841	·Refer to page: 841	·Refer to page: 841	
■ Plug				
Blanking plug/ GWJP3-B				
				
Compatible Tube O.D. ø 3.2				
·Refer to page: 842				

● Sales unit is 10 pcs./bag.

F.R.L.  
F.R.  
F (Filtr)  
R (Reg)  
L (Lub)  
Drain Separ  
Mech Press SW  
Res press exh valve  
SlowStart  
Anti-bac/Bac-remove Filt  
Film Resist FR  
Oil-ProhR  
Med Press FR  
No Cu/ PTFE FRL  
Outdrs FRL  
Adapter Joiner Press Gauge  
CompFRL  
LgFRL  
PrecsR  
VacF/R  
Clean FR  
ElecPneur  
AirBoost  
Speed Ctrl  
Silncr  
CheckV/ other  
Fit/Tube  
Nozzle  
Air Unit  
PrecsCompn  
Electro Press SW  
ContactSW  
AirSens  
PresSW Cool  
Air Flo Sens/Ctrl  
WaterRtSens  
TotAirSys (Total Air)  
TotAirSys (Gamma)  
Gas generator  
RefrDry  
DesicDry  
HiPolymDry  
MainFiltr  
Dischrg etc  
Ending

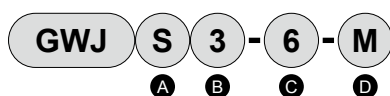
### Specifications

Item	GWJ
Working fluid	Compressed air
Max. working pressure MPa	1.0 (≈150 psi, 10 bar)
Ambient temperature °C	-10 (14°F) to 60 (140°F) (no freezing)
Tube used	Soft nylon tube (model No. F-1532, F-1504, F-1506) Urethane tube (model No. U-9532, U-9504, U-9506, NU-04, NU-06) Note

Note: Refer to page 902 for tube dimensions, ambient temperature and working pressure.

### How to order

\* Refer to the model No. on the dimensions page (pages 840 to 842) for the model No. combination.



A Shape		B Compatible tube O.D.		C Port size		D Other combinations	
<b>S</b>	Straight	<b>3</b>	ø3.2	<b>M3</b>	M3×0.5	<b>L</b>	Long
<b>L</b>	Elbow	<b>4</b>	ø4	<b>M5</b>	M5×0.8	<b>D</b>	D type
<b>Y</b>	Y tee	<b>6</b>	ø6	<b>6</b>	R1/8	<b>X</b>	Bulkhead
<b>T</b>	Tee			<b>0</b>	No thread	<b>M</b>	Female
<b>P</b>	Plug			<b>B</b>	Blanking plug		

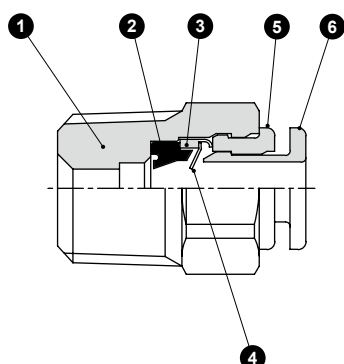
Note: Sales unit is 10 pcs./bag.

### Clean-room specifications (Catalog No. CB-033SA)

GWJ ..... - **P7\***

GWJ ..... - **P80**

### Internal structure and main parts list



No.	Name	Material
1	Body *1	Copper alloy (electroless nickeling treatment)
		Polybutylene terephthalate
2	Packing	Nitrile rubber
3	Holder	Copper alloy (electroless nickeling treatment)
4	Chuck	Stainless steel
5	Outer ring	Metal ; Polyacetal
		Resin ; CU alloy (electroless Ni treatment)
6	Push ring *2	Polyacetal

\*1: The body of the single straight, female straight and bulkhead is copper alloy (electroless nickeling).

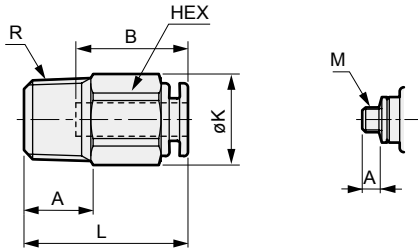
\*2: Standard push ring color: white, clean-room specifications P70: pink, P74: orange, P80: light blue.

F.R.L.  
 F.R.  
 F (Filtr)  
 R (Reg)  
 L (Lub)  
 Drain Separ  
 Mech Press SW  
 Res press exh valve  
 SlowStart  
 Anti-bac/Bac-remove Filtr  
 Film Resist FR  
 Oil-ProhR  
 Med Press FR  
 No Cu/ PTFE FRL  
 Outdrs FRL  
 Adapter Joiner Press Gauge  
 CompFRL  
 LgFRL  
 PrecsR  
 VacF/R  
 Clean FR  
 ElecPneuR  
 AirBoost  
 Speed Ctrl  
 Silncr  
 CheckV/ other  
 Fit/Tube  
 Nozzle  
 Air Unit  
 PrecsCompn  
 Electro Press SW  
 ContactSW  
 AirSens  
 PresSW Cool  
 Air Flo Sens/Ctrl  
 WaterRISens  
 TotAirSys (Total Air)  
 TotAirSys (Gamma)  
 Gas generator  
 RefrDry  
 DesicDry  
 HiPolymDry  
 MainFiltr  
 Dischrg etc  
 Ending



## F.R.L. Dimensions: Single straight/female straight/bulkhead/straight/different diameter straight/single elbow

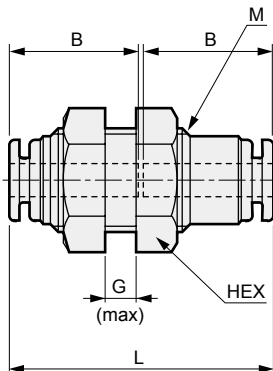
F.R. Single straight  
● GWJS□-□



Dimensions with \* are for model with punched hexagon hole.

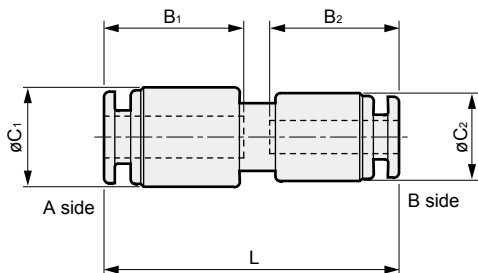
Model No.	Tube O.D. ø	R M	HEX	K	L	A	B	Min. bore size	Eff. X-sectional area mm <sup>2</sup>	Wt. g
GWJS3-M3	3.2	M3×0.5	8	8.8	17	2.4	12.5	1.2	0.9	2.4
GWJS3-M5		M5×0.8	8	8.8	18	3.4	12.5	2.5	2.5	3
GWJS3- 6	4	1/8	10	11	16.5	8	12.5	2.5*	2.5	5.9
GWJS4-M3		M3×0.5	10	11	18	2.4	13.5	1.2	0.9	7.1
GWJS4-M5	6	M5×0.8	10	11	19	3.4	13.5	2.5	4	5.2
GWJS4- 6		1/8	10	11	20	8	13.5	2.5*	4	7.1
GWJS6-M5	6	M5×0.8	11	12.1	20	3.4	14.5	2.5	4	4.9
GWJS6- 6		1/8	11	12.1	21.5	8	14.5	4*	11	6.8

Bulkhead  
● GWJS3-0-X



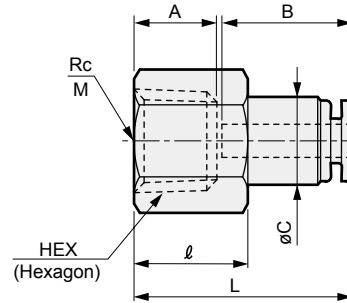
Model No.	Tube O.D. ø	L	B	HEX	Min. bore size	M	Panel thickness G	Panel bore size	Eff. X-sectional area mm <sup>2</sup>	Wt. g
GWJS3-0-X	3.2	26.5	12.5	12	2.5	M10×1.0	5	10.5	2.5	9.8

Different diameter straight  
● GWJS□-0



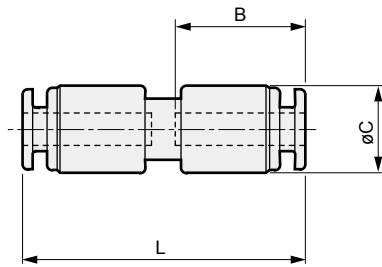
Model No.	Tube O.D. ø		L	B <sub>1</sub>	B <sub>2</sub>	C <sub>1</sub>	C <sub>2</sub>	Min. bore size	Eff. X-sectional area mm <sup>2</sup>	Wt. g
	A side	B side								
GWJS34-0	4	3.2	28.5	13.5	12.5	9.6	8.5	2.2	2.5	3.1
GWJS36-0	6	3.2	28.5	14.5	12.5	11.8	8.8	2.2	2.5	4.1

Female straight  
● GWJS3-□-M [Sales unit is 10 pcs./bag]



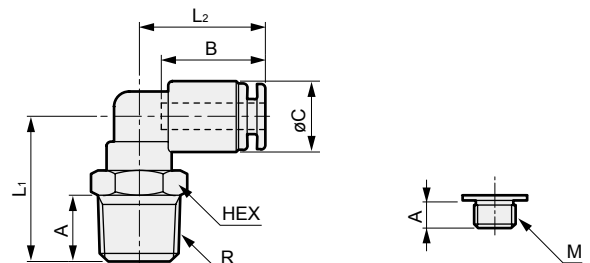
Model No.	Tube O.D. ø	Rc M	HEX	L	A	B	C	ℓ	Min. bore size	Eff. X-sectional area mm <sup>2</sup>	Wt. g
GWJS3-M3-M	3.2	M3×0.5	8	17.5	4	12.5	7.8	7.0	2.5	2.5	4
GWJS3-M5-M		M5×0.8	8	18.5	5	12.5	7.8	8.0	2.5	2.5	4
GWJS3- 6-M	4	1/8	12	21.5	8	12.5	8.5	11.0	2.5	2.5	4

Straight  
● GWJS3-0



Model No.	Tube O.D. ø	L	B	C	Min. bore size	Eff. X-sectional area mm <sup>2</sup>	Wt. g
GWJS3-0	3.2	27.5	12.5	8.5	2.2	2.5	2.4

Single elbow  
● GWJL□-□



Model No.	Tube O.D. ø	R M	HEX	L <sub>1</sub>	L <sub>2</sub>	A	B	C	Min. bore size	Eff. X-sectional area mm <sup>2</sup>	Wt. g
GWJL3-M3	3.2	M3×0.5	8	13	15.5	2.4	12.5	8.5	1.2	0.8	3.3
GWJL3-M5		M5×0.8	8	13	15.5	3.4	12.5	8.5	2.2	2.5	3.6
GWJL3- 6	4	1/8	10	17.5	15.5	8	12.5	8.5	2.2	2.3	6
GWJL4-M3		M3×0.5	8	13	16.5	2.4	13.5	9.6	1.2	0.8	4
GWJL4-M5	6	M5×0.8	8	13	16.5	3.4	13.5	9.6	2.5	3	4.4
GWJL4- 6		1/8	10	17.5	16.5	8	13.5	9.6	2.5	3	6.8
GWJL6-M5	6	M5×0.8	10	15.5	18.5	3.4	14.5	11.8	2.5	3.5	7
GWJL6- 6		1/8	10	18.5	18.5	8	14.5	11.8	4	9.5	8.4

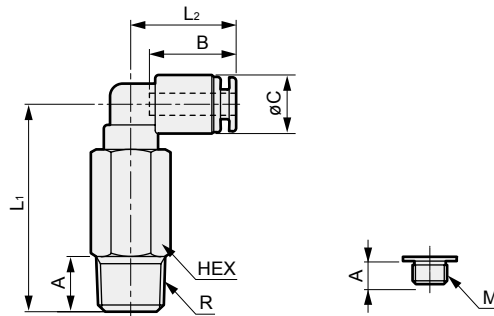
### Dimensions: Long elbow/elbow/double tee/D tee/tee/Y tee



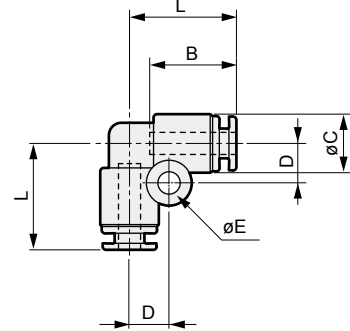
[Sales unit is 10 pcs./bag]

Long elbow  
● GWJL□-□-L

Elbow  
● GWJL3-0



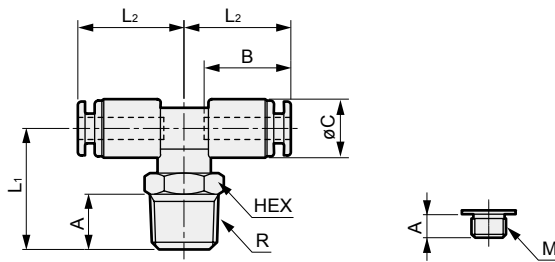
Model No.	Tube O.D. ø	R M	HEX	L <sub>1</sub>	L <sub>2</sub>	A	B	C	Min. bore size	Eff. X-sectional area mm <sup>2</sup>	Wt. g
GWJL3-M3-L	3.2	M3×0.5	8	25.5	15.5	2.4	12.5	8.5	1.2	0.8	8.2
GWJL3-M5-L		M5×0.8	8	25.5	15.5	3.4	12.5	8.5	2.2	2.3	8.6
GWJL3- 6-L	4	1/8	10	30	15.5	8	12.5	8.5	2.2	2.3	13
GWJL4-M5-L		M5×0.8	8	25.5	16.5	3.4	13.5	9.6	2.5	3	9.4
GWJL4- 6-L	6	1/8	10	30	16.5	8	13.5	9.6	2.5	3	14
GWJL6-M5-L		M5×0.8	10	30.5	18.5	3.4	14.5	11.8	2.5	3.5	16
GWJL6- 6-L		1/8	10	33.5	18.5	8	14.5	11.8	4	8.5	16



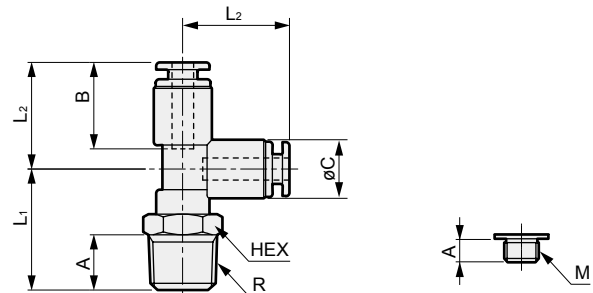
Model No.	Tube O.D. ø	L	B	C	D	E	Min. bore size	Eff. X-sectional area mm <sup>2</sup>	Wt. g
GWJL3-0	3.2	15.5	12.5	8.5	5.7	3.2	2.2	2.3	2.8

Double tee  
● GWJT3-□

D tee  
● GWJT3-□-D



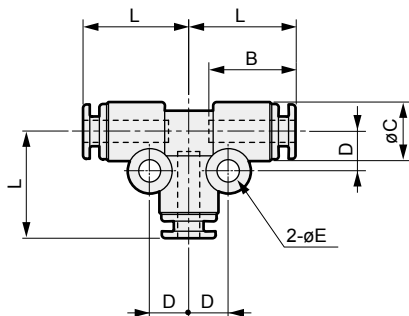
Model No.	Tube O.D. ø	R M	HEX	L <sub>1</sub>	L <sub>2</sub>	A	B	C	Min. bore size	Eff. X-sectional area mm <sup>2</sup>	Wt. g
GWJT3-M3	3.2	M3×0.5	8	13	15.5	2.4	12.5	8.5	1.2	0.9	4.4
GWJT3-M5		M5×0.8	8	13	15.5	3.4	12.5	8.5	2.2	2.7	4.7
GWJT3-6		1/8	10	17.5	15.5	8	12.5	8.5	2.2	2.7	7.1



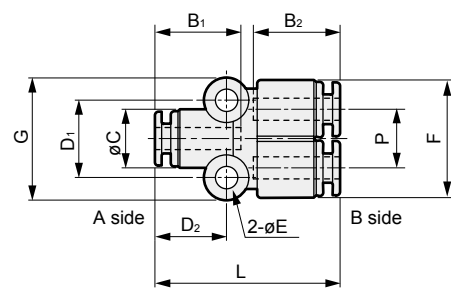
Model No.	Tube O.D. ø	R M	HEX	L <sub>1</sub>	L <sub>2</sub>	A	B	C	Min. bore size	Eff. X-sectional area mm <sup>2</sup>	Wt. g
GWJT3-M3-D	3.2	M3×0.5	8	13	15.5	2.4	12.5	8.5	1.2	0.9	4.4
GWJT3-M5-D		M5×0.8	8	13	15.5	3.4	12.5	8.5	2.2	2.7	4.8
GWJT3-6-D		1/8	10	17.5	15.5	8	12.5	8.5	2.2	2.7	7.2

Tee  
● GWJT3-0

Y tee  
● GWJY□-0



Model No.	Tube O.D. ø	L	B	C	D	E	Min. bore size	Eff. X-sectional area mm <sup>2</sup>	Wt. g
GWJT3-0	3.2	15.5	12.5	8.5	5.7	3.2	2.2	2.7	2.4



Model No.	Tube O.D. ø		L	B <sub>1</sub>	B <sub>2</sub>	C	D <sub>1</sub>	D <sub>2</sub>	E	F	P	G	Eff. X-sectional area mm <sup>2</sup>	Wt. g
	A side	B side												
GWJY33-0	3.2	3.2	27	12.5	12.5	8.5	11.2	10.5	3.2	17	8.5	17.7	2.7	4
GWJY43-0	4	3.2	28.5	13.5	12.5	9.6	12.2	12	3.2	17	8.5	18.7	2.7	4.9

- F.R.L.
- F.R.
- F (Filtr)
- R (Reg)
- L (Lub)
- Drain Separ
- Mech Press SW
- Res press exh valve
- SlowStart
- Anti-bac/Bac-remove Filtr
- Film Resist FR
- Oil-ProhR
- Med Press FR
- No Cu/ PTFE FRL
- Outdrs FRL
- Adapter Joiner Press Gauge
- CompFRL
- LgFRL
- PrecsR
- VacF/R
- Clean FR
- ElecPneuR
- AirBoost
- Speed Ctrl
- Silncr
- CheckV/ other
- Fit/Tube
- Nozzle
- Air Unit
- PrecsCompn
- Electro Press SW
- ContactSW
- AirSens
- PresSW Cool
- Air Flo Sens/Ctrl
- WaterRISens
- TotAirSys (Total Air)
- TotAirSys (Gamma)
- Gas generator
- RefrDry
- DesicDry
- HiPolymDry
- MainFiltr Dischrg etc
- Ending

- F.R.L.
- F.R.
- F (Filtr)
- R (Reg)
- L (Lub)
- Drain Separ
- Mech Press SW
- Res press exh valve
- SlowStart
- Anti-bac/Bac-remove Filtr
- Film Resist FR
- Oil-ProhR
- Med Press FR
- No Cu/ PTFE FRL
- Outdrs FRL
- Adapter Joiner
- Press Gauge
- CompFRL
- LgFRL
- PrecsR
- VacF/R
- Clean FR
- ElecPneuR
- AirBoost
- Speed Ctrl
- Silncr**
- CheckV/ other
- Fit/Tube**
- Nozzle**
- Air Unit
- PrecsCompn
- Electro Press SW
- ContactSW
- AirSens
- PresSW Cool
- Air Flo Sens/Ctrl
- WaterRtSens
- TotAirSys (Total Air)
- TotAirSys (Gamma)
- Gas generator
- RefrDry
- DesicDry
- HiPolymDry
- MainFiltr
- Dischrg etc
- Ending

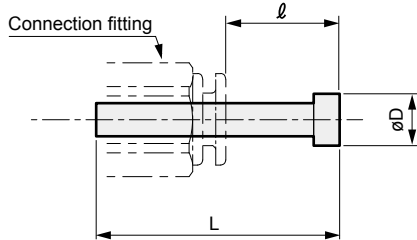
## Dimensions: Blanking plug



[Sales unit is 10 pcs./bag]

Blanking plug

- GWJP3-B
- GWP□-B



Material: Polyamide

Model No.	Fitting port size $\phi$	L	L*	D	Weight g
GWJP3-B	3.2	23.5	11	5	0.2
GWP 4-B	4	27	13.5	6	0.5
GWP 6-B	6	29	14.5	8	1

\* For connection fitting, dimensions of CKD (GWJ Series) are shown.