






F.R.L.
 F.R.
 F (Filtr)
 R (Reg)
 L (Lub)
 Drain
 Separ
 Mech
 Press SW
 Res press
 exh valve
 SlowStart
 Anti-bac/Bac-
 remove Filt
 Film
 Resist FR
 Oil-ProhR
 Med
 Press FR
 No Cu/
 PTFE FRL
 Outdrs FRL
 Adapter
 Joiner
 Press
 Gauge
 CompFRL
 LgFRL
 PrecsR
 VacF/R
 Clean FR
 ElecPneuR
 AirBoost
 Speed Ctrl
 Silncr
 CheckV/
 other
 Fit/Tube
 Nozzle
 Air Unit
 PrecsCompn
 Electro
 Press SW
 ContactSW
 AirSens
 PresSW
 Cool
 Air Flo
 Sens/Ctrl
 WaterRtSens
 TotAirSys
 (Total Air)
 TotAirSys
 (Gamma)
 Gas
 generator
 RefrDry
 DesicDry
 HiPolymDry
 MainFiltr
 Dischrg
 etc
 Ending

ZW

Fitting, stainless steel series

Port size M5 to R1/2

Single straight ZW-S□-□	Compatible tube O.D. ø	Single elbow ZW-L□-□	Compatible tube O.D. ø
	4		4
	6		6
	8		8
	10		10
	12		12
·Refer to page: 847		·Refer to page: 847	
Elbow ZW-L□-0	Compatible tube O.D. ø	Tee ZW-T□-0	Compatible tube O.D. ø
	4		4
	6		6
	8		8
	10		10
	12		12
·Refer to page: 847		·Refer to page: 847	
Straight ZW-S□-0	Compatible tube O.D. ø		
	4		
	6		
	8		
	10		
	12		
·Refer to page: 847			

· Sales unit is 1 pc.

Flame-resistant resin and stainless steel materials have been adopted. ——— ZW Series fittings.

Highly efficient, clean-feeling white body.

Port size: M5 to R1/2

Compatible tube O.D.: $\varnothing 4$ to $\varnothing 12$



- Compact size saves space.
- Smooth insertion and accurate sealing.
- Flame-resistant resin incorporated in white body and push ring. (Equivalent to UL94 standards V-0)
- Stainless steel incorporated for all metal parts.

White flame-resistant resin body

Flame-resistant PBT (UL94 Standards V-0 or equivalent) used as standard for a white body blending in with any work environment.

Full flow rate

By eliminating sections narrower than the tubing's bore, a flow equivalent to the tubing's bore can be passed.

Easy piping work

The section of the pipe connected with the body rotates freely, so piping removal can be set freely.

Standard stainless steel

As standard, all metal parts are made of stainless steel to improve corrosion resistance and appearance.

Sealant applied on threads

Teflon resin is coated on the thread part, eliminating the need to wind sealing tape. The even seal prevents leakage, etc.

Secure tubing holding

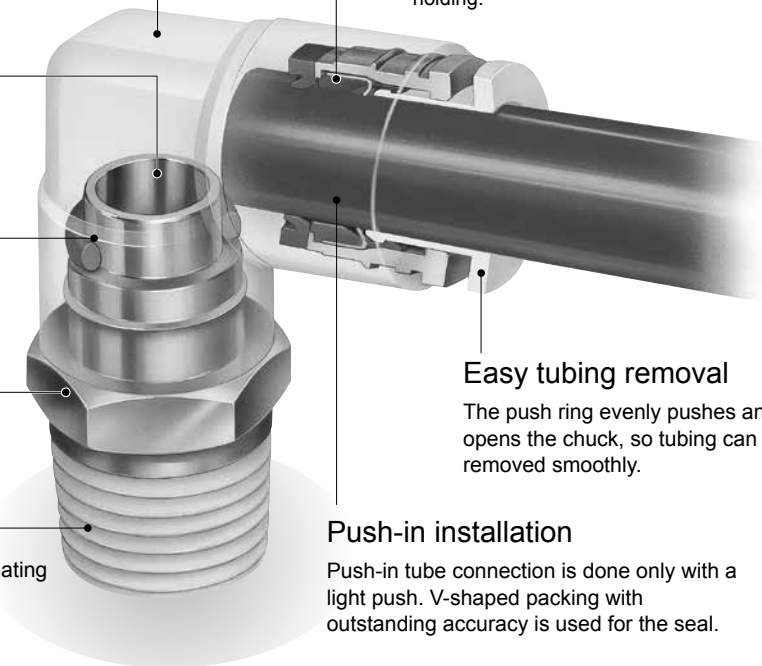
Chuck fitting acts in the direction in which the tubing dislocates, ensuring highly reliable holding.

Easy tubing removal

The push ring evenly pushes and opens the chuck, so tubing can be removed smoothly.

Push-in installation

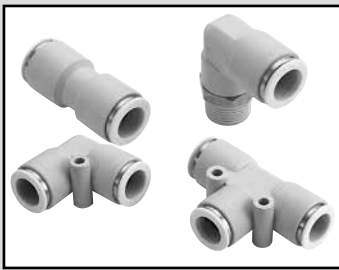
Push-in tube connection is done only with a light push. V-shaped packing with outstanding accuracy is used for the seal.



ZW Series Flame-resistant resin and stainless steel materials have been adopted.

F.R.L.
F.R.
F (Filtr)
R (Reg)
L (Lub)
Drain Separ
Mech Press SW
Res press exh valve
SlowStart
Anti-bac/Bac-remove Filtr
Film Resist FR
Oil-ProhR
Med Press FR
No Cu/ PTFE FRL
Outdrs FRL
Adapter Joiner Press Gauge
CompFRL
LgFRL
PrecsR
VacF/R
Clean FR
ElecPneuR
AirBoost
Speed Ctrl
Silncr
CheckV/ other
Fit/Tube
Nozzle
Air Unit
PrecsCompn
Electro Press SW
ContactSW
AirSens
PresSW Cool
Air Flo Sens/Ctrl
WaterRISens
TotAirSys (Total Air)
TotAirSys (Gamma)
Gas generator
RefrDry
DesicDry
HiPolymDry
MainFiltr
Dischrg etc
Ending

F.R.L.
F.R.
F (Filtr)
R (Reg)
L (Lub)
Drain Separ
Mech Press SW
Res press exh valve
SlowStart
Anti-bac/Bac-remove Filtr
Film Resist FR
Oil-ProhR
Med Press FR
No Cu/ PTFE FRL
Outdrs FRL
Adapter Joiner Press Gauge
CompFRL
LgFRL
PrecsR
VacF/R
Clean FR
ElecPneR
AirBoost
Speed Ctrl
Silncr
CheckV/ other
Fit/Tube
Nozzle
Air Unit
PrecsCompn
Electro Press SW
ContactSW
AirSens
PresSW Cool
Air Flo Sens/Ctrl
WaterRtSens
TotAirSys (Total Air)
TotAirSys (Gamma)
Gas generator
RefrDry
DesicDry
HiPolymDry
MainFiltr
Dischrg etc
Ending



Fitting, stainless steel series

ZW Series

- Port size: M5 to R1/2
- Compatible tube: $\varnothing 4$ to $\varnothing 12$



Specifications

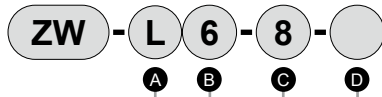
Item	ZW
Working fluid	Compressed air
Max. working pressure MPa	1.0 (≈ 150 psi, 10 bar)
Negative pressure kPa	-100 (≈ 15 psi, -1 bar) *2
Ambient temperature °C	-10 (14°F) to 60 (140°F) (no freezing)
Tube used	Soft nylon tube (F-15**)
	Urethane tube (U-92**, U-95**, NU-**) *1

*1: Refer to page 902 for tube dimensions, ambient temperature and working pressure.

*2: Use an insert ring when using urethane tube (U-92**, U-95**, NU-**) under vacuum pressure.
(This is a made-to-order product. Contact CKD for details.)

How to order

* Refer to the model No. on the dimensions page (page 847) for the model No. combination.



A Shape		B Compatible tube O.D.		C Port size		D Option	
S	Straight	4	$\varnothing 4$	M5	M5 \times 0.8	Blank	None
L	Elbow	6	$\varnothing 6$	6	R1/8	P11	Ozone-proof product
T	Tee	8	$\varnothing 8$	8	R1/4		
		10	$\varnothing 10$	10	R3/8		
		12	$\varnothing 12$	15	R1/2		
				0	No thread		

Note: Sales unit is 1 pc.

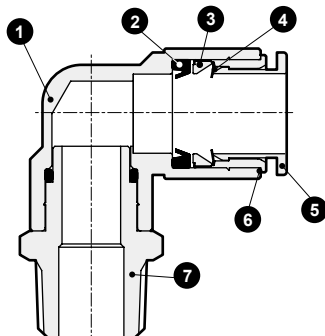
Clean-room specifications (Catalog No. CB-033SA)

Specifications for rechargeable battery (Catalog No. CC-1226A)

ZW-.....- P80

● Structure compatible with rechargeable battery manufacturing process
ZW-.....- P4

Internal structure and main parts list



No.	Name	Material
1	Body *1	Stainless steel (SUS304) Polybutylene terephthalate (flame-resistant resin *2)
2	Packing	Nitrile rubber
3	Chuck holder	Polyetherimide
4	Chuck	Stainless steel (SUS301)
5	Push ring *3	Polybutylene terephthalate (flame-resistant resin *2)
6	Outer ring	Stainless steel (SUS304)
7	Drive-in nipple	Stainless steel (SUS304)

*1: The single straight body is stainless steel (SUS304).

*2: Equivalent to UL94 standards V-0

*3: Standard push ring color: pure white, P80: light blue, P4: pure white.

*4: For the stainless steel series, the 5 push ring color is identified with pure white.

*5: P4 and FP materials differ from the above.

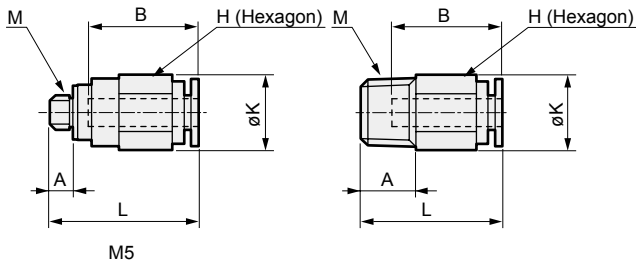
Mainly, stainless steel of 1 6 7 is SUS303.

Refer to Catalog No. CC-1012A for other details.

Dimensions

Single straight

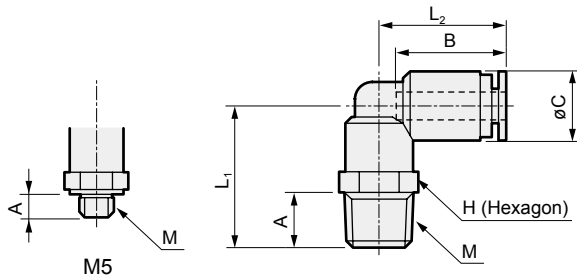
● ZW-S□-□



Model No.	Tube O.D. ø	M	H	K	L	A	B	Min. bore size	Eff. X-sectional area mm ²	Wt. g
ZW-S 4-M5	4	M5×0.8	10	11	21.5	4	16	2.5	4	6.7
ZW-S 4- 6		R1/8	10	11	20.5	8	16	2.5	4	7.8
ZW-S 4- 8		R1/4	14	15	19.5	11	16	2.5	4	15
ZW-S 6-M5	6	M5×0.8	12	13	23	4	17.5	2.5	4.4	8.6
ZW-S 6- 6		R1/8	12	13	23	8	17.5	4	10.3	9.5
ZW-S 6- 8		R1/4	14	15	23.5	11	17.5	4	10.3	17
ZW-S 6-10	6	R3/8	17	19.6	21.5	12	17.5	4	10.3	26
ZW-S 8- 6		R1/8	14	15.8	28	8	19	5	17.5	16
ZW-S 8- 8		R1/4	14	15.8	27	11	19	6	22.4	17
ZW-S 8-10	8	R3/8	17	19.6	22.5	12	19	6	22.4	23
ZW-S10- 8		R1/4	17	19.6	32.5	11	21.5	8	30.5	26
ZW-S10-10		R3/8	17	19.6	28.5	12	21.5	8	30.5	26
ZW-S10-15	10	R1/2	22	24	26.5	15	21.5	8	30.5	46
ZW-S12-10		R3/8	19	21	30.5	12	23	10	40	29
ZW-S12-15		R1/2	22	24	29.5	15	23	10	40	47

Single elbow

● ZW-L□-□

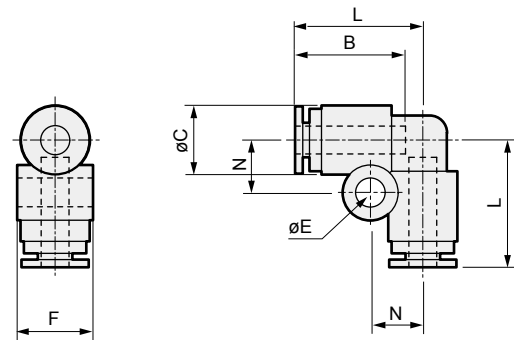


Model No.	Tube O.D. ø	M	H	L ₁	L ₂	A	B	C	Min. bore size	Eff. X-sectional area mm ²	Wt. g
ZW-L 4-M5	4	M5×0.8	8	15	18	4	16	10	2.5	3.2	4.9
ZW-L 4- 6		R1/8	10	20.5	18.5	8	16	10	2.5	3.2	8
ZW-L 4- 8		R1/4	14	24	18.5	11	16	10	2.5	3.2	15
ZW-L 6-M5	6	M5×0.8	10	15	20	4	17.5	12.5	2.5	4.2	6.8
ZW-L 6- 6		R1/8	12	24	21	8	17.5	12.5	4	8	13
ZW-L 6- 8		R1/4	14	27.5	21	11	17.5	12.5	4	8	17
ZW-L 6-10	6	R3/8	17	29	21	12	17.5	12.5	4	8	25
ZW-L 8- 6		R1/8	14	25.5	23.5	8	19	14.5	6	18	16
ZW-L 8- 8		R1/4	14	28.5	23.5	11	19	14.5	6	18	19
ZW-L 8-10	8	R3/8	17	30	23.5	12	19	14.5	6	18	27
ZW-L10- 8		R1/4	17	31	27	11	21.5	17.5	8	27	27
ZW-L10-10		R3/8	17	32.5	27	12	21.5	17.5	8	27	32
ZW-L10-15	10	R1/2	22	35.5	27	15	21.5	17.5	8	27	46
ZW-L12-10		R3/8	19	34.5	29.5	12	23	20	9	35	40
ZW-L12-15		R1/2	22	37.5	29.5	15	23	20	9	35.5	52

Elbow

● ZW-L□-□-0

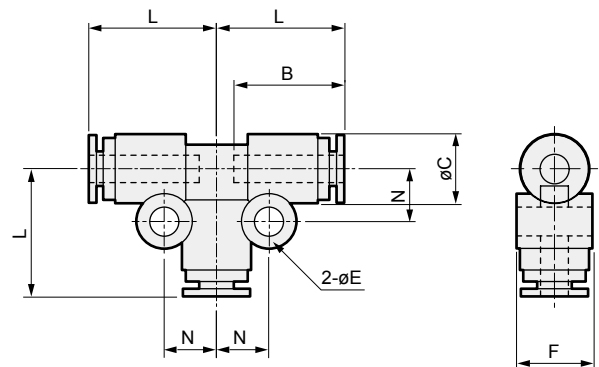
[Sales unit is 1 pc./bag]



Model No.	Tube O.D. ø	L	B	C	N	E	F	Min. bore size	Eff. X-sectional area mm ²	Wt. g
ZW-L 4-0	4	18.5	16	10	7.5	4.2	11	2.5	3	5.2
ZW-L 6-0	6	21	17.5	12.5	8.5	4.2	13.5	4	7.5	7.7
ZW-L 8-0	8	23.5	19	14.5	9.5	4.2	15.5	6	17	9.5
ZW-L10-0	10	27	21.5	17.5	11	4.2	18.5	8	25.5	16
ZW-L12-0	12	29.5	23	20	12	4.2	21	10	34	20

Tee

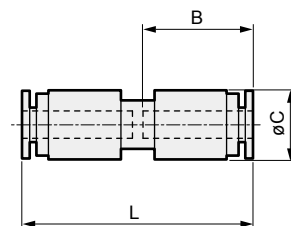
● ZW-T□-0



Model No.	Tube O.D. ø	L	B	C	E	F	N	Min. bore size	Eff. X-sectional area mm ²	Wt. g
ZW-T 4-0	4	18.5	16	10	4.2	11	7.5	2.5	3.6	8.2
ZW-T 6-0	6	21	17.5	12.5	4.2	13.5	8.5	4	9.7	12
ZW-T 8-0	8	23.5	19	14.5	4.2	15.5	9.5	6	22	15
ZW-T10-0	10	27	21.5	17.5	4.2	18.5	11	8	30	23
ZW-T12-0	12	29.5	23	20	4.2	21	12	10	35.5	29

Straight

● ZW-S□-0



Model No.	Tube O.D. ø	L	B	C	Min. bore size	Eff. X-sectional area mm ²	Wt. g
ZW-S 4-0	4	33.5	16	10	2.5	4	4.5
ZW-S 6-0	6	36.5	17.5	12.5	4	10	6.9
ZW-S 8-0	8	39.5	19	14.5	6	22	8
ZW-S10-0	10	45	21.5	17.5	8	30	14
ZW-S12-0	12	47.5	23	20	10	35	17

F.R.L.
F.R.
F (Filtr)
R (Reg)
L (Lub)
Drain Separ
Mech Press SW
Res press exh valve
SlowStart
Anti-bac/Bac-remove Filtr
Film Resist FR
Oil-Prohr
Med Press FR
No Cu/ PTFE FRL
Outdris FRL
Adapter Joiner Press Gauge
CompFRL
LgFRL
PrecsR
VacF/R
Clean FR
ElecPneuR
AirBoost
Speed Ctrl
Silncr
CheckV/ other
Fit/Tube
Nozzle
Air Unit
PrecsCompn
Electro Press SW
ContactSW
AirSens
PresSW Cool
Air Flo Sens/Ctrl
WaterR/Sens
TotAirSys (Total Air)
TotAirSys (Gamma)
Gas generator
RefrDry
DesicDry
HiPolymDry
MainFiltr
Dischrg etc
Ending